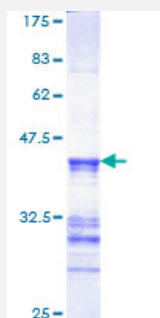


MAPK13 (Human) Recombinant Protein (Q01)

Catalog # H00005603-Q01

Size 25 ug, 10 ug

Applications



Specification

Product Description	Human MAPK13 partial ORF (AAH00433, 251 a.a. - 365 a.a.) recombinant protein with GST-tag at N-terminal.
Sequence	NDKAAKSYQSLPQTPRKDFTQLFPRASPQAADLLEKMLELDVDRRLTAAQALTHPFFEPFRDPE EETEAQQPFDDSL EHEKLTVD EWKQH IYKEIVNFSP IARKDSRRRSGMKL
Host	Wheat Germ (in vitro)
Theoretical MW (kDa)	38.28
Preparation Method	in vitro wheat germ expression system
Purification	Glutathione Sepharose 4 Fast Flow
Quality Control Testing	12.5% SDS-PAGE Stained with Coomassie Blue.
Storage Buffer	50 mM Tris-HCl, 10 mM reduced Glutathione, pH=8.0 in the elution buffer.
Storage Instruction	Store at -80°C. Aliquot to avoid repeated freezing and thawing.
Note	Best use within three months from the date of receipt of this protein.

Applications

- Enzyme-linked Immunoabsorbent Assay
- Western Blot (Recombinant protein)
- Antibody Production
- Protein Array

Gene Info — MAPK13

Entrez GeneID [5603](#)

GeneBank Accession# [BC000433](#)

Protein Accession# [AAH00433](#)

Gene Name MAPK13

Gene Alias MGC99536, PRKM13, SAPK4, p38delta

Gene Description mitogen-activated protein kinase 13

Omim ID [602899](#)

Gene Ontology [Hyperlink](#)

Gene Summary The protein encoded by this gene is a member of the MAP kinase family. MAP kinases act as an integration point for multiple biochemical signals, and are involved in a wide variety of cellular processes such as proliferation, differentiation, transcription regulation and development. This kinase is closely related to p38 MAP kinase, both of which can be activated by proinflammatory cytokines and cellular stress. MAP kinase kinases 3, and 6 can phosphorylate and activate this kinase. Transcription factor ATF2, and microtubule dynamics regulator stathmin have been shown to be the substrates of this kinase. [provided by RefSeq]

Other Designations OTTHUMP00000016282|mitogen-activated protein kinase p38 delta|stress-activated protein kinase 4

Pathway

- [Amyotrophic lateral sclerosis \(ALS\)](#)
- [Epithelial cell signaling in Helicobacter pylori infection](#)

- [Fc epsilon RI signaling pathway](#)
- [GnRH signaling pathway](#)
- [Leukocyte transendothelial migration](#)
- [MAPK signaling pathway](#)
- [Neurotrophin signaling pathway](#)
- [T cell receptor signaling pathway](#)
- [Toll-like receptor signaling pathway](#)
- [VEGF signaling pathway](#)

Disease

- [Cardiovascular Diseases](#)
- [Diabetes Mellitus](#)
- [Edema](#)
- [HIV Infections](#)