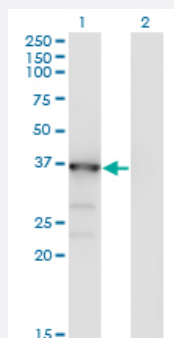


MAPK13 monoclonal antibody (M06A), clone 3D8

Catalog # H00005603-M06A

Size 200 uL

Applications

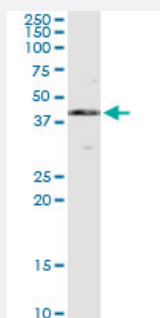


Western Blot (Transfected lysate)

Western Blot analysis of MAPK13 expression in transfected 293T cell line by MAPK13 monoclonal antibody (M06A), clone 3D8.

Lane 1: MAPK13 transfected lysate(42.1 KDa).

Lane 2: Non-transfected lysate.



Immunoprecipitation

Immunoprecipitation of MAPK13 transfected lysate using anti-MAPK13 monoclonal antibody and Protein A Magnetic Bead, and immunoblotted with MAPK13 MaxPab rabbit polyclonal antibody.



Western Blot detection against Immunogen (38.28 KDa) .

Specification

Product Description

Mouse monoclonal antibody raised against a partial recombinant MAPK13.

Immunogen	MAPK13 (AAH00433, 251 a.a. ~ 365 a.a) partial recombinant protein with GST tag. MW of the GST tag alone is 26 KDa.
Sequence	NDKAAKSYQSLPQTPRKDFTQLFPRASPQAADLLEKMLELDVDRRLTAAQALTHPFFEPFRDPE EETEAQQPFDDSLSEHEKLTVDWKQHIYKEIVNFSPARKDSRRRSGMKL
Host	Mouse
Reactivity	Human
Isotype	IgG2b Kappa
Quality Control Testing	Antibody Reactive Against Recombinant Protein. Western Blot detection against Immunogen (38.28 KDa) .
Storage Buffer	In ascites fluid
Storage Instruction	Store at -20°C or lower. Aliquot to avoid repeated freezing and thawing.

Applications

- Western Blot (Transfected lysate)

Western Blot analysis of MAPK13 expression in transfected 293T cell line by MAPK13 monoclonal antibody (M06A), clone 3D8.

Lane 1: MAPK13 transfected lysate(42.1 KDa).

Lane 2: Non-transfected lysate.

[Protocol Download](#)

- Immunoprecipitation

Immunoprecipitation of MAPK13 transfected lysate using anti-MAPK13 monoclonal antibody and Protein A Magnetic Bead, and immunoblotted with MAPK13 MaxPab rabbit polyclonal antibody.

[Protocol Download](#)

- ELISA

Gene Info — MAPK13

Entrez GeneID	5603
GeneBank Accession#	BC000433
Protein Accession#	AAH00433

Gene Name	MAPK13
Gene Alias	MGC99536, PRKM13, SAPK4, p38delta
Gene Description	mitogen-activated protein kinase 13
Omim ID	602899
Gene Ontology	Hyperlink
Gene Summary	The protein encoded by this gene is a member of the MAP kinase family. MAP kinases act as an integration point for multiple biochemical signals, and are involved in a wide variety of cellular processes such as proliferation, differentiation, transcription regulation and development. This kinase is closely related to p38 MAP kinase, both of which can be activated by proinflammatory cytokines and cellular stress. MAP kinase kinases 3, and 6 can phosphorylate and activate this kinase. Transcription factor ATF2, and microtubule dynamics regulator stathmin have been shown to be the substrates of this kinase. [provided by RefSeq]
Other Designations	OTTHUMP00000016282 mitogen-activated protein kinase p38 delta stress-activated protein kinase 4

Pathway

- [Amyotrophic lateral sclerosis \(ALS\)](#)
- [Epithelial cell signaling in Helicobacter pylori infection](#)
- [Fc epsilon RI signaling pathway](#)
- [GnRH signaling pathway](#)
- [Leukocyte transendothelial migration](#)
- [MAPK signaling pathway](#)
- [Neurotrophin signaling pathway](#)
- [T cell receptor signaling pathway](#)
- [Toll-like receptor signaling pathway](#)
- [VEGF signaling pathway](#)

Disease

- [Cardiovascular Diseases](#)

- [Diabetes Mellitus](#)
- [Edema](#)
- [HIV Infections](#)