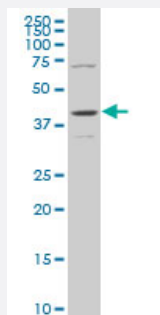


MAPK13 monoclonal antibody (M04), clone 1E6

Catalog # H00005603-M04

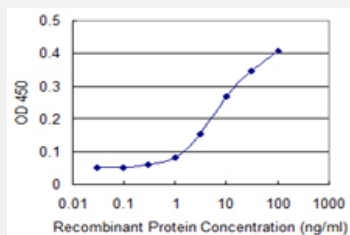
Size 100 ug

Applications



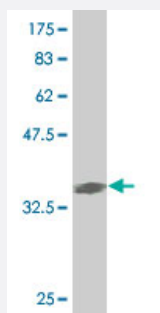
Western Blot (Cell lysate)

MAPK13 monoclonal antibody (M04), clone 1E6 Western Blot analysis of MAPK13 expression in HepG2 (Cat # L019V1).



Sandwich ELISA (Recombinant protein)

Detection limit for recombinant GST tagged MAPK13 is 0.3 ng/ml as a capture antibody.



Western Blot detection against Immunogen (38.28 KDa) .

Specification

Product Description

Mouse monoclonal antibody raised against a partial recombinant MAPK13.

| | |
|-------------------------|--|
| Immunogen | MAPK13 (AAH00433, 251 a.a. ~ 365 a.a) partial recombinant protein with GST tag. MW of the GST tag alone is 26 KDa. |
| Sequence | NDKAAKSYQSLPQTPRKDFTQLFPRASPQAADLLEKMLELDVDRRLTAAQALTHPFFEPFRDPE EETEAQQPFDDSL EHEKLTVD EWKQH IYKEIVNFSP IARKDSRRRSGMKL |
| Host | Mouse |
| Reactivity | Human |
| Isotype | IgG1 Kappa |
| Quality Control Testing | Antibody Reactive Against Recombinant Protein. Western Blot detection against Immunogen (38.28 KDa) . |
| Storage Buffer | In 1x PBS, pH 7.4 |
| Storage Instruction | Store at -20°C or lower. Aliquot to avoid repeated freezing and thawing. |

Applications

- Western Blot (Cell lysate)

MAPK13 monoclonal antibody (M04), clone 1E6 Western Blot analysis of MAPK13 expression in HepG2 (Cat # L019V1).

[Protocol Download](#)

- Western Blot (Recombinant protein)

[Protocol Download](#)

- Sandwich ELISA (Recombinant protein)

Detection limit for recombinant GST tagged MAPK13 is 0.3 ng/ml as a capture antibody.

[Protocol Download](#)

- ELISA

Gene Info — MAPK13

| | |
|---------------------|--------------------------|
| Entrez GeneID | 5603 |
| GeneBank Accession# | BC000433 |
| Protein Accession# | AAH00433 |

| | |
|--------------------|---|
| Gene Name | MAPK13 |
| Gene Alias | MGC99536, PRKM13, SAPK4, p38delta |
| Gene Description | mitogen-activated protein kinase 13 |
| Omim ID | 602899 |
| Gene Ontology | Hyperlink |
| Gene Summary | The protein encoded by this gene is a member of the MAP kinase family. MAP kinases act as an integration point for multiple biochemical signals, and are involved in a wide variety of cellular processes such as proliferation, differentiation, transcription regulation and development. This kinase is closely related to p38 MAP kinase, both of which can be activated by proinflammatory cytokines and cellular stress. MAP kinase kinases 3, and 6 can phosphorylate and activate this kinase. Transcription factor ATF2, and microtubule dynamics regulator stathmin have been shown to be the substrates of this kinase. [provided by RefSeq] |
| Other Designations | OTTHUMP00000016282 mitogen-activated protein kinase p38 delta stress-activated protein kinase 4 |

Pathway

- [Amyotrophic lateral sclerosis \(ALS\)](#)
- [Epithelial cell signaling in Helicobacter pylori infection](#)
- [Fc epsilon RI signaling pathway](#)
- [GnRH signaling pathway](#)
- [Leukocyte transendothelial migration](#)
- [MAPK signaling pathway](#)
- [Neurotrophin signaling pathway](#)
- [T cell receptor signaling pathway](#)
- [Toll-like receptor signaling pathway](#)
- [VEGF signaling pathway](#)

Disease

- [Cardiovascular Diseases](#)

- [Diabetes Mellitus](#)
- [Edema](#)
- [HIV Infections](#)