

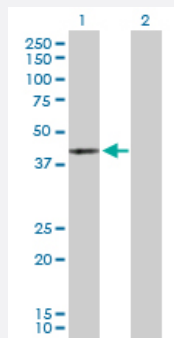
MaxPab®

MAPK13 purified MaxPab rabbit polyclonal antibody (D01P)

Catalog # H00005603-D01P

Size 100 ug

Applications

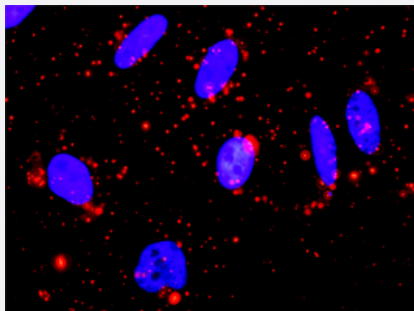


Western Blot (Transfected lysate)

Western Blot analysis of MAPK13 expression in transfected 293T cell line ([H00005603-T02](#)) by MAPK13 MaxPab polyclonal antibody.

Lane 1: MAPK13 transfected lysate(42.10 KDa).

Lane 2: Non-transfected lysate.



In situ Proximity Ligation Assay (Cell)

Proximity Ligation Analysis of protein-protein interactions between MAPK13 and MAPKAPK3. HeLa cells were stained with anti-MAPK13 rabbit purified polyclonal 1:1200 and anti-MAPKAPK3 mouse monoclonal antibody 1:50. Each red dot represents the detection of protein-protein interaction complex, and nuclei were counterstained with DAPI (blue).

Specification

Product Description

Rabbit polyclonal antibody raised against a full-length human MAPK13 protein.

Immunogen

MAPK13 (NP_002745.1, 1 a.a. ~ 365 a.a) full-length human protein.

Sequence

MSLIRKKGFYKQDVNKTAWELPKTYVSPTHVGSGAYGSVCSAIDKRSGEKVAIKLSRPFQSEIFA
KRAYRELLLLKHMQHENVIGLLDVFTPASSLRNFYDFYLVMPFMQTDLQKIMGMEFSEEKIQYLVY
QMLKGLKYIHSAGVVHRDLKPGNLAVNEDCELKILDFGLARHADAEMTGYVVTRWYRAPEVILSW
MHYNQTVDMWSVGCIMAEMLTGKTLFKGKDYLDQLTQILKVTGVPGTEFVQKLNDKAAKSYQSLP
QTPRKDFTQLFPRASPQAADLLEKMLELDVDKRLTAAQALTHPFFEPFRDPEEETEAAQQPFDDSD
LEHEKLTVDEWKQHIYKEVNFSPARKDSRRRSGMKL

Host

Rabbit

Reactivity	Human
Quality Control Testing	Antibody reactive against mammalian transfected lysate.
Storage Buffer	In 1x PBS, pH 7.4
Storage Instruction	Store at -20°C or lower. Aliquot to avoid repeated freezing and thawing.

Applications

- Western Blot (Transfected lysate)

Western Blot analysis of MAPK13 expression in transfected 293T cell line ([H00005603-T02](#)) by MAPK13 MaxPab polyclonal antibody.

Lane 1: MAPK13 transfected lysate(42.10 KDa).

Lane 2: Non-transfected lysate.

[Protocol Download](#)

- In situ* Proximity Ligation Assay (Cell)

Proximity Ligation Analysis of protein-protein interactions between MAPK13 and MAPKAPK3. HeLa cells were stained with anti-MAPK13 rabbit purified polyclonal 1:1200 and anti-MAPKAPK3 mouse monoclonal antibody 1:50. Each red dot represents the detection of protein-protein interaction complex, and nuclei were counterstained with DAPI (blue).

Gene Info — MAPK13

Entrez GeneID	5603
GeneBank Accession#	NM_002754.3
Protein Accession#	NP_002745.1
Gene Name	MAPK13
Gene Alias	MGC99536, PRKM13, SAPK4, p38delta
Gene Description	mitogen-activated protein kinase 13
Omim ID	602899
Gene Ontology	Hyperlink

Gene Summary

The protein encoded by this gene is a member of the MAP kinase family. MAP kinases act as an integration point for multiple biochemical signals, and are involved in a wide variety of cellular processes such as proliferation, differentiation, transcription regulation and development. This kinase is closely related to p38 MAP kinase, both of which can be activated by proinflammatory cytokines and cellular stress. MAP kinase kinases 3, and 6 can phosphorylate and activate this kinase. Transcription factor ATF2, and microtubule dynamics regulator stathmin have been shown to be the substrates of this kinase. [provided by RefSeq]

Other Designations

OTTHUMP00000016282|mitogen-activated protein kinase p38 delta|stress-activated protein kinase 4

Pathway

- [Amyotrophic lateral sclerosis \(ALS\)](#)
- [Epithelial cell signaling in Helicobacter pylori infection](#)
- [Fc epsilon RI signaling pathway](#)
- [GnRH signaling pathway](#)
- [Leukocyte transendothelial migration](#)
- [MAPK signaling pathway](#)
- [Neurotrophin signaling pathway](#)
- [T cell receptor signaling pathway](#)
- [Toll-like receptor signaling pathway](#)
- [VEGF signaling pathway](#)

Disease

- [Cardiovascular Diseases](#)
- [Diabetes Mellitus](#)
- [Edema](#)
- [HIV Infections](#)