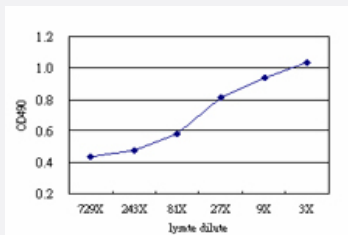


MAPK13 (Human) Matched Antibody Pair

Catalog # H00005603-AP51

Size 1 Set

Applications



Sandwich ELISA detection sensitivity ranging from approximately 81x to 3x dilution of the MAPK13 293T overexpression lysate (non-denatured).

Specification

Product Description

This antibody pair set comes with a matched antibody pair to detect and quantify the protein level of human MAPK13.

Reactivity

Human

Quality Control Testing

Standard curve using MAPK13 293T overexpression lysate (non-denatured) as an analyte. Sandwich ELISA detection sensitivity ranging from approximately 81x to 3x dilution of the MAPK13 293T overexpression lysate (non-denatured).

Supplied Product

Antibody pair set content:

1. Capture antibody: mouse monoclonal anti-MAPK13 (100 ug)
2. Detection antibody: rabbit purified polyclonal anti-MAPK13 (50 ug)

*Reagents are sufficient for at least 3-5 x 96 well plates using recommended protocols.

Storage Instruction

Store reagents of the antibody pair set at -20°C or lower. Please aliquot to avoid repeated freeze thaw cycle. Reagents should be returned to -20°C storage immediately after use.

Applications

- ELISA Pair (Transfected lysate)

[Protocol Download](#)

Gene Info — MAPK13

Entrez GeneID	5603
Gene Name	MAPK13
Gene Alias	MGC99536, PRKM13, SAPK4, p38delta
Gene Description	mitogen-activated protein kinase 13
Omim ID	602899
Gene Ontology	Hyperlink
Gene Summary	The protein encoded by this gene is a member of the MAP kinase family. MAP kinases act as an integration point for multiple biochemical signals, and are involved in a wide variety of cellular processes such as proliferation, differentiation, transcription regulation and development. This kinase is closely related to p38 MAP kinase, both of which can be activated by proinflammatory cytokines and cellular stress. MAP kinase kinases 3, and 6 can phosphorylate and activate this kinase. Transcription factor ATF2, and microtubule dynamics regulator stathmin have been shown to be the substrates of this kinase. [provided by RefSeq]
Other Designations	OTTHUMP00000016282 mitogen-activated protein kinase p38 delta stress-activated protein kinase 4

Pathway

- [Amyotrophic lateral sclerosis \(ALS\)](#)
- [Epithelial cell signaling in Helicobacter pylori infection](#)
- [Fc epsilon RI signaling pathway](#)
- [GnRH signaling pathway](#)
- [Leukocyte transendothelial migration](#)
- [MAPK signaling pathway](#)
- [Neurotrophin signaling pathway](#)
- [T cell receptor signaling pathway](#)
- [Toll-like receptor signaling pathway](#)
- [VEGF signaling pathway](#)

Disease

- [Cardiovascular Diseases](#)
- [Diabetes Mellitus](#)
- [Edema](#)
- [HIV Infections](#)