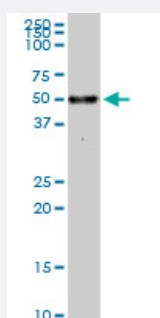


MAPK9 monoclonal antibody (M05), clone 1D6

Catalog # H00005601-M05

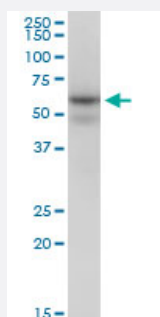
Size 100 ug

Applications



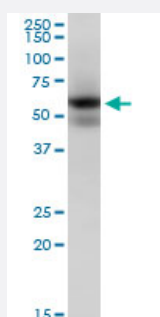
Western Blot (Tissue lysate)

MAPK9 monoclonal antibody (M05), clone 1D6. Western Blot analysis of MAPK9 expression in human liver.



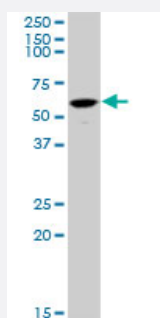
Western Blot (Cell lysate)

MAPK9 monoclonal antibody (M05), clone 1D6. Western Blot analysis of MAPK9 expression in Raw 264.7 (Cat # L024V1).



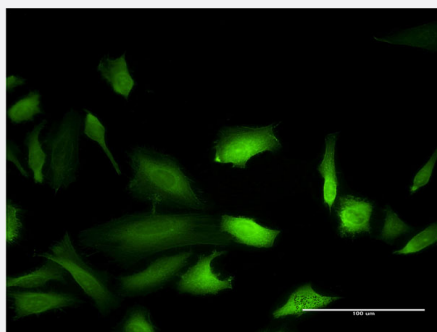
Western Blot (Cell lysate)

MAPK9 monoclonal antibody (M05), clone 1D6. Western Blot analysis of MAPK9 expression in PC-12 (Cat # L012V1).



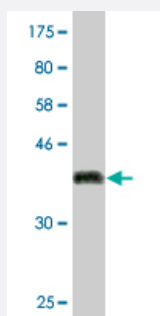
Western Blot (Cell lysate)

MAPK9 monoclonal antibody (M05), clone 1D6. Western Blot analysis of MAPK9 expression in HepG2 (Cat # L019V1).



Immunofluorescence

Immunofluorescence of monoclonal antibody to MAPK9 on HeLa cell .
[antibody concentration 10 ug/ml]



Western Blot detection against Immunogen (37.07 KDa) .

Specification

Product Description	Mouse monoclonal antibody raised against a partial recombinant MAPK9.
Immunogen	MAPK9 (AAH32539, 321 a.a. ~ 424 a.a) partial recombinant protein with GST tag. MW of the GST tag alone is 26 KDa.
Sequence	ITVWYDPAEAEAPPPQYDAQLEEREHAIEEWKELYKEVMDWEERSKNGVVKDQPSDAAVSSN ATPSQSSSINDISSMSTEQTLASDTDSSLDASTGPLEGCR
Host	Mouse
Reactivity	Human, Mouse, Rat
Isotype	IgG2a Kappa
Quality Control Testing	Antibody Reactive Against Recombinant Protein. Western Blot detection against Immunogen (37.07 KDa) .
Storage Buffer	In 1x PBS, pH 7.4
Storage Instruction	Store at -20°C or lower. Aliquot to avoid repeated freezing and thawing.

Applications

- Western Blot (Tissue lysate)

MAPK9 monoclonal antibody (M05), clone 1D6. Western Blot analysis of MAPK9 expression in human liver.

[Protocol Download](#)

- Western Blot (Cell lysate)

MAPK9 monoclonal antibody (M05), clone 1D6. Western Blot analysis of MAPK9 expression in Raw 264.7(Cat # L024V1).

[Protocol Download](#)

- Western Blot (Cell lysate)

MAPK9 monoclonal antibody (M05), clone 1D6. Western Blot analysis of MAPK9 expression in PC-12(Cat # L012V1).

[Protocol Download](#)

- Western Blot (Cell lysate)

MAPK9 monoclonal antibody (M05), clone 1D6. Western Blot analysis of MAPK9 expression in HepG2 (Cat # L019V1).

[Protocol Download](#)

- Western Blot (Recombinant protein)

[Protocol Download](#)

- ELISA

- Immunofluorescence

Immunofluorescence of monoclonal antibody to MAPK9 on HeLa cell . [antibody concentration 10 ug/ml]

Gene Info — MAPK9

Entrez GeneID	5601
GeneBank Accession#	BC032539
Protein Accession#	AAH32539
Gene Name	MAPK9
Gene Alias	JNK-55, JNK2, JNK2A, JNK2ALPHA, JNK2B, JNK2BETA, PRKM9, SAPK, p54a, p54aSAPK
Gene Description	mitogen-activated protein kinase 9
Omim ID	602896

Gene Ontology

[Hyperlink](#)

Gene Summary

The protein encoded by this gene is a member of the MAP kinase family. MAP kinases act as an integration point for multiple biochemical signals, and are involved in a wide variety of cellular processes such as proliferation, differentiation, transcription regulation and development. This kinase targets specific transcription factors, and thus mediates immediate-early gene expression in response to various cell stimuli. It is most closely related to MAPK8, both of which are involved in UV radiation induced apoptosis, thought to be related to the cytochrome c-mediated cell death pathway. This gene and MAPK8 are also known as c-Jun N-terminal kinases. This kinase blocks the ubiquitination of tumor suppressor p53, and thus it increases the stability of p53 in nonstressed cells. Studies of this gene's mouse counterpart suggest a key role in T-cell differentiation. Several alternatively spliced transcript variants encoding distinct isoforms have been reported. [provided by RefSeq]

Other Designations

Jun kinase|MAP kinase 9|c-Jun N-terminal kinase 2|c-Jun kinase 2|mitogen-activated protein kinase 9 isoform JNK2 alpha2|stress-activated protein kinase JNK2

Pathway

- [Adipocytokine signaling pathway](#)
- [Colorectal cancer](#)
- [Epithelial cell signaling in Helicobacter pylori infection](#)
- [ErbB signaling pathway](#)
- [Fc epsilon RI signaling pathway](#)
- [Focal adhesion](#)
- [GnRH signaling pathway](#)
- [Insulin signaling pathway](#)
- [MAPK signaling pathway](#)
- [Neurotrophin signaling pathway](#)
- [Pancreatic cancer](#)
- [Pathways in cancer](#)
- [T cell receptor signaling pathway](#)
- [Toll-like receptor signaling pathway](#)
- [Type II diabetes mellitus](#)

- [Wnt signaling pathway](#)

Disease

- [Breast cancer](#)
- [Breast Neoplasms](#)
- [Genetic Predisposition to Disease](#)
- [HIV Infections](#)
- [Tobacco Use Disorder](#)