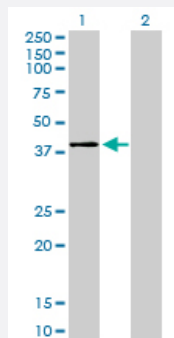


MAPK11 monoclonal antibody (M03), clone 1F9

Catalog # H00005600-M03

Size 100 ug

Applications

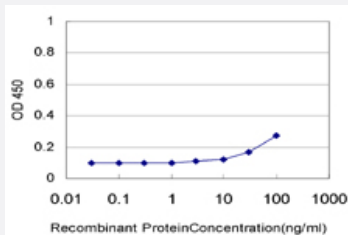


Western Blot (Transfected lysate)

Western Blot analysis of MAPK11 expression in transfected 293T cell line by MAPK11 monoclonal antibody (M03), clone 1F9.

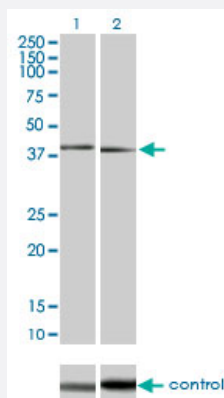
Lane 1: MAPK11 transfected lysate (41.4 kDa).

Lane 2: Non-transfected lysate.



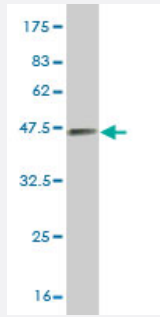
Sandwich ELISA (Recombinant protein)

Detection limit for recombinant GST tagged MAPK11 is approximately 10 ng/ml as a capture antibody.



RNAi Knockdown (Antibody validated)

Western blot analysis of MAPK11 over-expressed 293 cell line, cotransfected with MAPK11 Validated Chimera RNAi (Cat # H00005600-R01V) (Lane 2) or non-transfected control (Lane 1). Blot probed with MAPK11 monoclonal antibody (M03) clone 1F9 (Cat # H00005600-M03). GAPDH (36.1 kDa) used as specificity and loading control.



Western Blot detection against Immunogen (37.73 KDa) .

Specification

Product Description	Mouse monoclonal antibody raised against a partial recombinant MAPK11.
Immunogen	MAPK11 (AAH27933, 255 a.a. ~ 364 a.a) partial recombinant protein with GST tag. MW of the GST tag alone is 26 KDa.
Sequence	ARTYIQLPMPQKDLSSIFRGANPLAIDLLGRMLVLDSQQRVSAAEALAHAYFSQYHDPEDPEPEA EPYDESVEAKERTLEEWKELTYQEVLSFKPPEPPKPPGSLEIEQ
Host	Mouse
Reactivity	Human
Isotype	IgG2a Kappa
Quality Control Testing	Antibody Reactive Against Recombinant Protein. Western Blot detection against Immunogen (37.73 KDa) .
Storage Buffer	In 1x PBS, pH 7.4
Storage Instruction	Store at -20°C or lower. Aliquot to avoid repeated freezing and thawing.

Applications

- Western Blot (Transfected lysate)

Western Blot analysis of MAPK11 expression in transfected 293T cell line by MAPK11 monoclonal antibody (M03), clone 1F9.

Lane 1: MAPK11 transfected lysate(41.4 KDa).

Lane 2: Non-transfected lysate.

[Protocol Download](#)

- Western Blot (Recombinant protein)

[Protocol Download](#)

- Sandwich ELISA (Recombinant protein)

Detection limit for recombinant GST tagged MAPK11 is approximately 10ng/ml as a capture antibody.

[Protocol Download](#)

- ELISA

- RNAi Knockdown (Antibody validated)

Western blot analysis of MAPK11 over-expressed 293 cell line, cotransfected with MAPK11 Validated Chimera RNAi (Cat # H00005600-R01V) (Lane 2) or non-transfected control (Lane 1). Blot probed with MAPK11 monoclonal antibody (M03) clone 1F9 (Cat # H00005600-M03). GAPDH (36.1 kDa) used as specificity and loading control.

[Protocol Download](#)

Gene Info — MAPK11

Entrez GeneID [5600](#)

GeneBank Accession# [BC027933](#)

Protein Accession# [AAH27933](#)

Gene Name MAPK11

Gene Alias P38B, P38BETA2, PRKM11, SAPK2, SAPK2B, p38-2, p38Beta

Gene Description mitogen-activated protein kinase 11

Omim ID [602898](#)

Gene Ontology [Hyperlink](#)

Gene Summary The protein encoded by this gene is a member of the MAP kinase family. MAP kinases act as an integration point for multiple biochemical signals, and are involved in a wide variety of cellular processes such as proliferation, differentiation, transcription regulation, and development. This kinase is most closely related to p38 MAP kinase, both of which can be activated by proinflammatory cytokines and environmental stress. This kinase is activated through its phosphorylation by MAP kinase kinases (MKKs), preferably by MKK6. Transcription factor ATF2/CREB2 has been shown to be a substrate of this kinase. [provided by RefSeq]

Other Designations OTTHUMP00000196655|mitogen-activated protein kinase p38 beta|mitogen-activated protein kinase p38-2|stress-activated protein kinase-2|stress-activated protein kinase-2b

Pathway

- [Amyotrophic lateral sclerosis \(ALS\)](#)
- [Epithelial cell signaling in Helicobacter pylori infection](#)
- [Fc epsilon RI signaling pathway](#)
- [GnRH signaling pathway](#)
- [Leukocyte transendothelial migration](#)
- [MAPK signaling pathway](#)
- [Neurotrophin signaling pathway](#)
- [T cell receptor signaling pathway](#)
- [Toll-like receptor signaling pathway](#)
- [VEGF signaling pathway](#)

Disease

- [Cardiovascular Diseases](#)
- [Diabetes Mellitus](#)
- [Edema](#)
- [HIV Infections](#)