

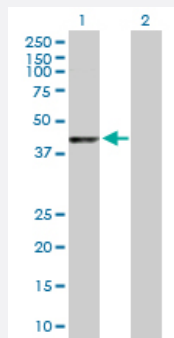
MaxPab®

MAPK11 purified MaxPab rabbit polyclonal antibody (D01P)

Catalog # H00005600-D01P

Size 100 ug

Applications

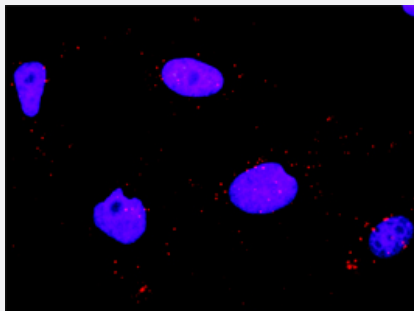


Western Blot (Transfected lysate)

Western Blot analysis of MAPK11 expression in transfected 293T cell line ([H00005600-T02](#)) by MAPK11 MaxPab polyclonal antibody.

Lane 1: MAPK11 transfected lysate(41.40 KDa).

Lane 2: Non-transfected lysate.



In situ Proximity Ligation Assay (Cell)

Proximity Ligation Analysis of protein-protein interactions between MAPK11 and MAP3K7IP1. HeLa cells were stained with anti-MAPK11 rabbit purified polyclonal 1:1200 and anti-MAP3K7IP1 mouse monoclonal antibody 1:50. Each red dot represents the detection of protein-protein interaction complex, and nuclei were counterstained with DAPI (blue).

Specification

Product Description

Rabbit polyclonal antibody raised against a full-length human MAPK11 protein.

Immunogen

MAPK11 (NP_002742.3, 1 a.a. ~ 364 a.a) full-length human protein.

Sequence

MSGPRAGFYRQELNKTVWEVPQRLQGLRPVGSAYGSGVCSAYDARLRQKVAVKKLSRPFQSLI
HARRTYRELRLKHLKHENVIGLLDVFTPATSIEDFSEVYLVTTLMGADLNNMKCQALSDEHVQFL
VYQLLRGLKYIHSAGIIHRDLKPSNVAVNEDCELRLDFGLARQADEEMTGYVATRWYRAPEIMLNW
MHYNQTVDMWSVGCIMAELLQGKALFPGSDYIDQLKRIMEVVGTPSPEVLAKISSEHARTYIQLSPP
MPQKDLSSIFRGANPLAIDLLGRMLVLDSQQRVSAAEALAHAYFSQYHDPEDPEPEAEPYDESVE
AKERTLEEWKELTYQEVLSFKPPEPPKPPGSLEIEQ

Host

Rabbit

| | |
|-------------------------|--|
| Reactivity | Human |
| Quality Control Testing | Antibody reactive against mammalian transfected lysate. |
| Storage Buffer | In 1x PBS, pH 7.4 |
| Storage Instruction | Store at -20°C or lower. Aliquot to avoid repeated freezing and thawing. |

Applications

- Western Blot (Transfected lysate)

Western Blot analysis of MAPK11 expression in transfected 293T cell line ([H00005600-T02](#)) by MAPK11 MaxPab polyclonal antibody.

Lane 1: MAPK11 transfected lysate(41.40 KDa).

Lane 2: Non-transfected lysate.

[Protocol Download](#)

- In situ* Proximity Ligation Assay (Cell)

Proximity Ligation Analysis of protein-protein interactions between MAPK11 and MAP3K7IP1. HeLa cells were stained with anti-MAPK11 rabbit purified polyclonal 1:1200 and anti-MAP3K7IP1 mouse monoclonal antibody 1:50. Each red dot represents the detection of protein-protein interaction complex, and nuclei were counterstained with DAPI (blue).

Gene Info — MAPK11

| | |
|---------------------|---|
| Entrez GeneID | 5600 |
| GeneBank Accession# | NM_002751.5 |
| Protein Accession# | NP_002742.3 |
| Gene Name | MAPK11 |
| Gene Alias | P38B, P38BETA2, PRKM11, SAPK2, SAPK2B, p38-2, p38Beta |
| Gene Description | mitogen-activated protein kinase 11 |
| Omim ID | 602898 |
| Gene Ontology | Hyperlink |

Gene Summary

The protein encoded by this gene is a member of the MAP kinase family. MAP kinases act as an integration point for multiple biochemical signals, and are involved in a wide variety of cellular processes such as proliferation, differentiation, transcription regulation, and development. This kinase is most closely related to p38 MAP kinase, both of which can be activated by proinflammatory cytokines and environmental stress. This kinase is activated through its phosphorylation by MAP kinase kinases (MKKs), preferably by MKK6. Transcription factor ATF2/CREB2 has been shown to be a substrate of this kinase. [provided by RefSeq]

Other Designations

OTTHUMP00000196655|mitogen-activated protein kinase p38 beta|mitogen-activated protein kinase p38-2|stress-activated protein kinase-2|stress-activated protein kinase-2b

Pathway

- [Amyotrophic lateral sclerosis \(ALS\)](#)
- [Epithelial cell signaling in Helicobacter pylori infection](#)
- [Fc epsilon RI signaling pathway](#)
- [GnRH signaling pathway](#)
- [Leukocyte transendothelial migration](#)
- [MAPK signaling pathway](#)
- [Neurotrophin signaling pathway](#)
- [T cell receptor signaling pathway](#)
- [Toll-like receptor signaling pathway](#)
- [VEGF signaling pathway](#)

Disease

- [Cardiovascular Diseases](#)
- [Diabetes Mellitus](#)
- [Edema](#)
- [HIV Infections](#)