

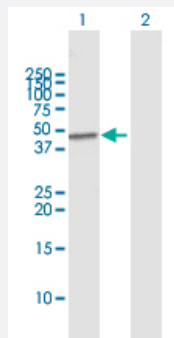
MaxPab®

MAPK11 MaxPab rabbit polyclonal antibody (D01)

Catalog # H00005600-D01

Size 100 uL

Applications

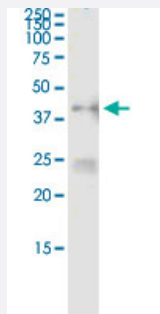


Western Blot (Transfected lysate)

Western Blot analysis of MAPK11 expression in transfected 293T cell line ([H00005600-T02](#)) by MAPK11 MaxPab polyclonal antibody.

Lane 1: MAPK11 transfected lysate(41.4 KDa).

Lane 2: Non-transfected lysate.



Immunoprecipitation

Immunoprecipitation of MAPK11 transfected lysate using anti-MAPK11 MaxPab rabbit polyclonal antibody and Protein A Magnetic Bead, and immunoblotted with MAPK11 purified MaxPab mouse polyclonal antibody (B01P) ([H00005600-B01P](#)).

Specification

Product Description

Rabbit polyclonal antibody raised against a full-length human MAPK11 protein.

Immunogen

MAPK11 (NP_002742.3, 1 a.a. ~ 364 a.a) full-length human protein.

Sequence

MSGPRAGFYRQELNKTVWEVPQRLQGLRPVGSGAYGSVCSAYDARLRQKVAVKKLSRPFQSLI
HARTYRELRLKHLKHENVIGLLDVFTPATSIEDFSEVYLVTTLMGADLNNMVKCQALSDEHVQFL
VYQLLRGLKYIHSAGIIHRDLKPSNVAVNEDCELRILDFGLARQADEEMTGYVATRWYRAPEIMLNW
MHYNQTVDMWSVGCIMAELLQGKALFPGSDYIDQLKRIMEVVGTPSPEVLAKISSEHARTYIQLSPP
MPQKDLSSIFRGANPLAIDLLGRMLVLDSQQRVSAAEALAHAYFSQYHDPEDPEPEAEPEYDESVE
AKERTLEEWKELTYQEVLSFKPPEPPKPPGSLEIEQ

Host

Rabbit

Reactivity	Human
Quality Control Testing	Antibody reactive against mammalian transfected lysate.
Storage Buffer	No additive
Storage Instruction	Store at -20°C or lower. Aliquot to avoid repeated freezing and thawing.

Applications

- Western Blot (Transfected lysate)

Western Blot analysis of MAPK11 expression in transfected 293T cell line ([H00005600-T02](#)) by MAPK11 MaxPab polyclonal antibody.

Lane 1: MAPK11 transfected lysate(41.4 KDa).

Lane 2: Non-transfected lysate.

[Protocol Download](#)

- Immunoprecipitation

Immunoprecipitation of MAPK11 transfected lysate using anti-MAPK11 MaxPab rabbit polyclonal antibody and Protein A Magnetic Bead, and immunoblotted with MAPK11 purified MaxPab mouse polyclonal antibody (B01P) ([H00005600-B01P](#)).

[Protocol Download](#)

Gene Info — MAPK11

Entrez GeneID	5600
GeneBank Accession#	NM_002751.5
Protein Accession#	NP_002742.3
Gene Name	MAPK11
Gene Alias	P38B, P38BETA2, PRKM11, SAPK2, SAPK2B, p38-2, p38Beta
Gene Description	mitogen-activated protein kinase 11
Omim ID	602898
Gene Ontology	Hyperlink

Gene Summary

The protein encoded by this gene is a member of the MAP kinase family. MAP kinases act as an integration point for multiple biochemical signals, and are involved in a wide variety of cellular processes such as proliferation, differentiation, transcription regulation, and development. This kinase is most closely related to p38 MAP kinase, both of which can be activated by proinflammatory cytokines and environmental stress. This kinase is activated through its phosphorylation by MAP kinase kinases (MKKs), preferably by MKK6. Transcription factor ATF2/CREB2 has been shown to be a substrate of this kinase. [provided by RefSeq]

Other Designations

OTTHUMP00000196655|mitogen-activated protein kinase p38 beta|mitogen-activated protein kinase p38-2|stress-activated protein kinase-2|stress-activated protein kinase-2b

Pathway

- [Amyotrophic lateral sclerosis \(ALS\)](#)
- [Epithelial cell signaling in Helicobacter pylori infection](#)
- [Fc epsilon RI signaling pathway](#)
- [GnRH signaling pathway](#)
- [Leukocyte transendothelial migration](#)
- [MAPK signaling pathway](#)
- [Neurotrophin signaling pathway](#)
- [T cell receptor signaling pathway](#)
- [Toll-like receptor signaling pathway](#)
- [VEGF signaling pathway](#)

Disease

- [Cardiovascular Diseases](#)
- [Diabetes Mellitus](#)
- [Edema](#)
- [HIV Infections](#)