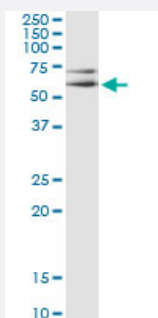


MAPK8 (Human) IP-WB Antibody Pair

Catalog # H00005599-PW5

Size 1 Set

Applications



Immunoprecipitation of MAPK8 transfected lysate using mouse monoclonal anti-MAPK8 and Protein A Magnetic Bead ([U0007](#)), and immunoblotted with rabbit polyclonal anti-MAPK8.

Specification

Product Description

This IP-WB antibody pair set comes with one antibody for immunoprecipitation and another to detect the precipitated protein in western blot.

Reactivity

Human

Quality Control Testing

Immunoprecipitation-Western Blot (IP-WB)

Immunoprecipitation of MAPK8 transfected lysate using mouse monoclonal anti-MAPK8 and Protein A Magnetic Bead ([U0007](#)), and immunoblotted with rabbit polyclonal anti-MAPK8.

Supplied Product

Antibody pair set content:

1. Antibody pair for IP: mouse monoclonal anti-MAPK8 (300 ug)
2. Antibody pair for WB: rabbit polyclonal anti-MAPK8 (50 ul)

Storage Instruction

Store reagents of the antibody pair set at -20°C or lower. Please aliquot to avoid repeated freeze thaw cycle. Reagents should be returned to -20°C storage immediately after use.

Applications

- Immunoprecipitation-Western Blot

[Protocol Download](#)

Gene Info — MAPK8

Entrez GeneID [5599](#)

Gene Name MAPK8

Gene Alias JNK, JNK1, JNK1A2, JNK21B1/2, PRKM8, SAPK1

Gene Description mitogen-activated protein kinase 8

Omim ID [601158](#)

Gene Ontology [Hyperlink](#)

Gene Summary

The protein encoded by this gene is a member of the MAP kinase family. MAP kinases act as an integration point for multiple biochemical signals, and are involved in a wide variety of cellular processes such as proliferation, differentiation, transcription regulation and development. This kinase is activated by various cell stimuli, and targets specific transcription factors, and thus mediates immediate-early gene expression in response to cell stimuli. The activation of this kinase by tumor necrosis factor alpha (TNF-alpha) is found to be required for TNF-alpha induced apoptosis. This kinase is also involved in UV radiation induced apoptosis, which is thought to be related to cytochrome c-mediated cell death pathway. Studies of the mouse counterpart of this gene suggested that this kinase play a key role in T cell proliferation, apoptosis and differentiation. Four alternatively spliced transcript variants encoding distinct isoforms have been reported. [provided by RefSeq]

Other Designations

JNK1 alpha protein kinase|JNK1 beta protein kinase|JUN N-terminal kinase|OTTHUMP00000019552|OTTHUMP00000019555|OTTHUMP00000019556|OTTHUMP00000019558|c-Jun N-terminal kinase 1|mitogen-activated protein kinase 8 isoform JNK1 alpha1|mitogen-activated protein

Pathway

- [Adipocytokine signaling pathway](#)
- [Colorectal cancer](#)
- [Epithelial cell signaling in Helicobacter pylori infection](#)
- [ErbB signaling pathway](#)
- [Fc epsilon RI signaling pathway](#)
- [Focal adhesion](#)
- [GnRH signaling pathway](#)
- [Insulin signaling pathway](#)
- [MAPK signaling pathway](#)

- [Neurotrophin signaling pathway](#)
- [Pancreatic cancer](#)
- [Pathways in cancer](#)
- [Toll-like receptor signaling pathway](#)
- [Type II diabetes mellitus](#)
- [Wnt signaling pathway](#)

Disease

- [Breast cancer](#)
- [Breast Neoplasms](#)
- [Cardiovascular Diseases](#)
- [Diabetes Mellitus](#)
- [Edema](#)
- [Genetic Predisposition to Disease](#)
- [HIV Infections](#)