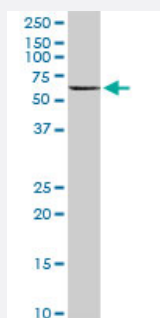


# MAPK8 monoclonal antibody (M25), clone 1A2

Catalog # H00005599-M25

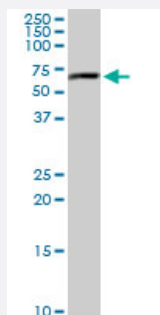
Size 100 ug

## Applications



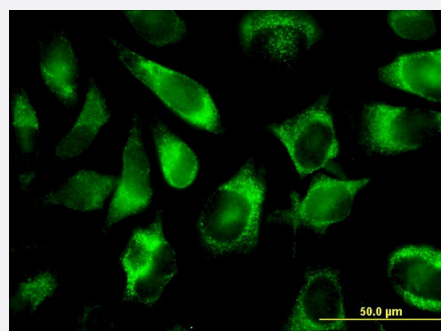
### Western Blot (Tissue lysate)

MAPK8 monoclonal antibody (M25), clone 1A2. Western Blot analysis of MAPK8 expression in human kidney.



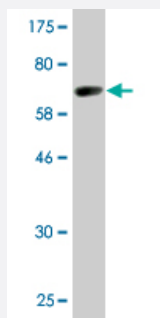
### Western Blot (Cell lysate)

MAPK8 monoclonal antibody (M25), clone 1A2. Western Blot analysis of MAPK8 expression in A-431(Cat # L015V1 ).



### Immunofluorescence

Immunofluorescence of monoclonal antibody to MAPK8 on HeLa cell .  
[antibody concentration 10 ug/ml]



Western Blot detection against Immunogen (67.87 KDa) .

## Specification

<b>Product Description</b>	Mouse monoclonal antibody raised against a full-length recombinant MAPK8.
<b>Immunogen</b>	MAPK8 (NP_002741.1, 1 a.a. ~ 384 a.a) full-length recombinant protein with GST tag. MW of the GST tag alone is 26 KDa.
<b>Sequence</b>	MSRSKRDNNFYSEIGDSTFTVLKRYQNLKPIGSGAQGVCAAYDAILERNVAIKKLSRPFQNQTHAKRAYRELVLMKCVNHKNIIGLLNVFTPQKSLEEFQDVYVMELMDANLCQVIQMELDHERMSYLLYQMLCGIKHLHSAGIIHRDLKPSNIVKSDCTLKILDFGLARTAGTSFMMTPYVTRYRAPEVILGMGYKENVDLWSVGCIMGEMVCHKILFPGRDYIDQWNKVIEQLGTPCPEFMKKLQPTVRTYVENRPKYAGYSFEKLFDPDLFPADSEHNKLKASQARDLLSKMLVIDASKRISVDEALQHPYINVWYDPSEAEAPPPKIPDKQLDEREHTIEEWKELIYKVMLEERTKNGVIRGQPSPLAQVQQ
<b>Host</b>	Mouse
<b>Reactivity</b>	Human
<b>Isotype</b>	IgG2a Kappa
<b>Quality Control Testing</b>	Antibody Reactive Against Recombinant Protein. Western Blot detection against Immunogen (67.87 KDa) .
<b>Storage Buffer</b>	In 1x PBS, pH 7.4
<b>Storage Instruction</b>	Store at -20°C or lower. Aliquot to avoid repeated freezing and thawing.

## Applications

### ● Western Blot (Tissue lysate)

MAPK8 monoclonal antibody (M25), clone 1A2. Western Blot analysis of MAPK8 expression in human kidney.

[Protocol Download](#)

- Western Blot (Cell lysate)

MAPK8 monoclonal antibody (M25), clone 1A2. Western Blot analysis of MAPK8 expression in A-431(Cat # L015V1 ).

[Protocol Download](#)

- Western Blot (Recombinant protein)

[Protocol Download](#)

- ELISA

- Immunofluorescence

Immunofluorescence of monoclonal antibody to MAPK8 on HeLa cell . [antibody concentration 10 ug/ml]

## Gene Info — MAPK8

**Entrez GeneID** [5599](#)

**GeneBank Accession#** [NM\\_002750.1](#)

**Protein Accession#** [NP\\_002741.1](#)

**Gene Name** MAPK8

**Gene Alias** JNK, JNK1, JNK1A2, JNK21B1/2, PRKM8, SAPK1

**Gene Description** mitogen-activated protein kinase 8

**Omim ID** [601158](#)

**Gene Ontology** [Hyperlink](#)

**Gene Summary** The protein encoded by this gene is a member of the MAP kinase family. MAP kinases act as an integration point for multiple biochemical signals, and are involved in a wide variety of cellular processes such as proliferation, differentiation, transcription regulation and development. This kinase is activated by various cell stimuli, and targets specific transcription factors, and thus mediates immediate-early gene expression in response to cell stimuli. The activation of this kinase by tumor necrosis factor alpha (TNF-alpha) is found to be required for TNF-alpha induced apoptosis. This kinase is also involved in UV radiation induced apoptosis, which is thought to be related to cytochrome c-mediated cell death pathway. Studies of the mouse counterpart of this gene suggested that this kinase play a key role in T cell proliferation, apoptosis and differentiation. Four alternatively spliced transcript variants encoding distinct isoforms have been reported. [provided by RefSeq]

**Other Designations** JNK1 alpha protein kinase|JNK1 beta protein kinase|JUN N-terminal kinase|OTTHUMP00000019552|OTTHUMP00000019555|OTTHUMP00000019556|OTTHUMP00000019558|c-Jun N-terminal kinase 1|mitogen-activated protein kinase 8 isoform JNK1 alpha1|mitogen-activated protein

## Pathway

- [Adipocytokine signaling pathway](#)
- [Colorectal cancer](#)
- [Epithelial cell signaling in Helicobacter pylori infection](#)
- [ErbB signaling pathway](#)
- [Fc epsilon RI signaling pathway](#)
- [Focal adhesion](#)
- [GnRH signaling pathway](#)
- [Insulin signaling pathway](#)
- [MAPK signaling pathway](#)
- [Neurotrophin signaling pathway](#)
- [Pancreatic cancer](#)
- [Pathways in cancer](#)
- [Toll-like receptor signaling pathway](#)
- [Type II diabetes mellitus](#)
- [Wnt signaling pathway](#)

## Disease

- [Breast cancer](#)
- [Breast Neoplasms](#)
- [Cardiovascular Diseases](#)
- [Diabetes Mellitus](#)
- [Edema](#)
- [Genetic Predisposition to Disease](#)
- [HIV Infections](#)