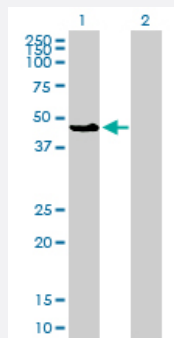


# MAPK8 monoclonal antibody (M11), clone 2F11

Catalog # H00005599-M11

Size 100 ug

## Applications

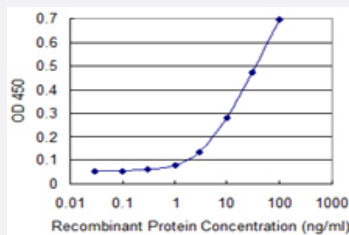


### Western Blot (Transfected lysate)

Western Blot analysis of MAPK8 expression in transfected 293T cell line by MAPK8 monoclonal antibody (M11), clone 2F11.

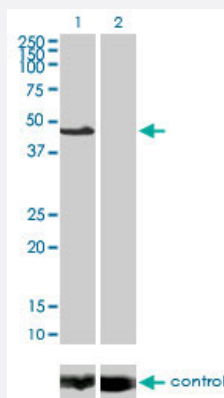
Lane 1: MAPK8 transfected lysate(48.3 KDa).

Lane 2: Non-transfected lysate.



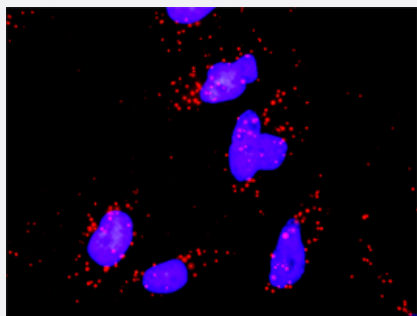
### Sandwich ELISA (Recombinant protein)

Detection limit for recombinant GST tagged MAPK8 is 1 ng/ml as a capture antibody.



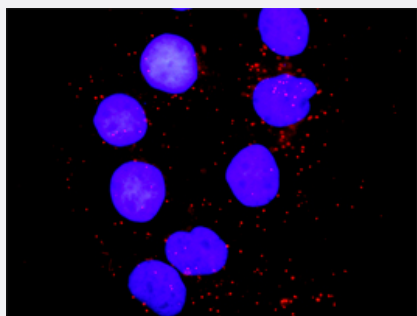
### RNAi Knockdown (Antibody validated)

Western blot analysis of MAPK8 over-expressed 293 cell line, cotransfected with MAPK8 Validated Chimera RNAi ( Cat # H00005599-R01V ) (Lane 2) or non-transfected control (Lane 1). Blot probed with MAPK8 monoclonal antibody (M11) clone 2F11 (Cat # H00005599-M11 ). GAPDH ( 36.1 kDa ) used as specificity and loading control.



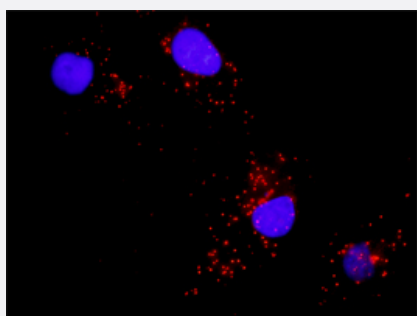
## *In situ Proximity Ligation Assay (Cell)*

Proximity Ligation Analysis of protein-protein interactions between CRK and MAPK8. HeLa cells were stained with anti-CRK rabbit purified polyclonal 1:1200 and anti-MAPK8 mouse monoclonal antibody 1:50. Each red dot represents the detection of protein-protein interaction complex, and nuclei were counterstained with DAPI (blue).



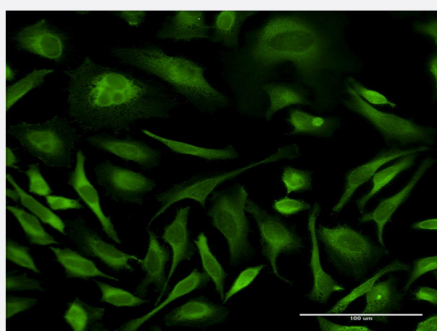
## *In situ Proximity Ligation Assay (Cell)*

Proximity Ligation Analysis of protein-protein interactions between PXN and MAPK8. Huh7 cells were stained with anti-PXN rabbit purified polyclonal 1:1200 and anti-MAPK8 mouse monoclonal antibody 1:50. Each red dot represents the detection of protein-protein interaction complex, and nuclei were counterstained with DAPI (blue).



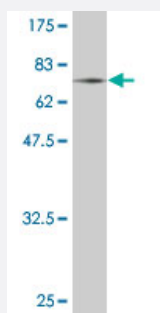
## *In situ Proximity Ligation Assay (Cell)*

Proximity Ligation Analysis of protein-protein interactions between BAD and MAPK8. Mahlavu cells were stained with anti-BAD rabbit purified polyclonal 1:1200 and anti-MAPK8 mouse monoclonal antibody 1:50. Each red dot represents the detection of protein-protein interaction complex, and nuclei were counterstained with DAPI (blue).



## Immunofluorescence

Immunofluorescence of monoclonal antibody to MAPK8 on HeLa cell .  
[antibody concentration 10 ug/ml]



Western Blot detection against Immunogen (67.87 KDa) .

## Specification

Product Description	Mouse monoclonal antibody raised against a full length recombinant MAPK8.
Immunogen	MAPK8 (NP_002741.1, 1 a.a. ~ 384 a.a) full-length recombinant protein with GST tag. MW of the GST tag alone is 26 KDa.
Sequence	MSRSKRDNNFYSVEIGDSTFTVLKRYQNLKPIGSGAQGVCAAYDAILERNVAIKKLSRPFQNQTHAKRAYRELVLKMCVNHKNIIGLLNVFTPQKSLEEFQDVYVME LMDANLCQVIQMELDHERMSYLLYQMLCGIKHLHSAGIIHRDLKPSNVVKSDCTLKILDFGLARTAGTSFMMTPYVTRYRAPEVILGMGYKENVDLWSVGCIMGEMVCHKILFPGRDYIDQWNKVIEQLGTPCPEFMKKLQPTVRTYVENRPKYAGYSFEKLFDPDLFPADSEHNKLKASQARDLLSKMLVIDASKRISVDEALQHPYINVWYDPSEAEAPPPKIPDKQLDEREHTIEEWKELIYKEVMDLEERTKNGVIRGQPSPLAQVQQ
Host	Mouse
Reactivity	Human
Isotype	IgG2a Kappa
Quality Control Testing	Antibody Reactive Against Recombinant Protein. Western Blot detection against Immunogen (67.87 KDa) .
Storage Buffer	In 1x PBS, pH 7.4
Storage Instruction	Store at -20°C or lower. Aliquot to avoid repeated freezing and thawing.

## Applications

- Western Blot (Transfected lysate)

Western Blot analysis of MAPK8 expression in transfected 293T cell line by MAPK8 monoclonal antibody (M11), clone 2F11.

Lane 1: MAPK8 transfected lysate(48.3 KDa).

Lane 2: Non-transfected lysate.

[Protocol Download](#)

- Western Blot (Recombinant protein)

[Protocol Download](#)

- Sandwich ELISA (Recombinant protein)

Detection limit for recombinant GST tagged MAPK8 is 1 ng/ml as a capture antibody.

[Protocol Download](#)

- ELISA

- RNAi Knockdown (Antibody validated)

Western blot analysis of MAPK8 over-expressed 293 cell line, cotransfected with MAPK8 Validated Chimera RNAi ( Cat # H00005599-R01V ) (Lane 2) or non-transfected control (Lane 1). Blot probed with MAPK8 monoclonal antibody (M11) clone 2F11 (Cat # H00005599-M11 ). GAPDH ( 36.1 kDa ) used as specificity and loading control.

[Protocol Download](#)

- *In situ* Proximity Ligation Assay (Cell)

Proximity Ligation Analysis of protein-protein interactions between CRK and MAPK8. HeLa cells were stained with anti-CRK rabbit purified polyclonal 1:1200 and anti-MAPK8 mouse monoclonal antibody 1:50. Each red dot represents the detection of protein-protein interaction complex, and nuclei were counterstained with DAPI (blue).

- *In situ* Proximity Ligation Assay (Cell)

Proximity Ligation Analysis of protein-protein interactions between PXN and MAPK8. Huh7 cells were stained with anti-PXN rabbit purified polyclonal 1:1200 and anti-MAPK8 mouse monoclonal antibody 1:50. Each red dot represents the detection of protein-protein interaction complex, and nuclei were counterstained with DAPI (blue).

- *In situ* Proximity Ligation Assay (Cell)

Proximity Ligation Analysis of protein-protein interactions between BAD and MAPK8. Mahlavu cells were stained with anti-BAD rabbit purified polyclonal 1:1200 and anti-MAPK8 mouse monoclonal antibody 1:50. Each red dot represents the detection of protein-protein interaction complex, and nuclei were counterstained with DAPI (blue).

- Immunofluorescence

Immunofluorescence of monoclonal antibody to MAPK8 on HeLa cell . [antibody concentration 10 ug/ml]

## Gene Info — MAPK8

Entrez GeneID [5599](#)

GeneBank Accession# [NM\\_002750.1](#)

Protein Accession# [NP\\_002741.1](#)

Gene Name MAPK8

Gene Alias JNK, JNK1, JNK1A2, JNK21B1/2, PRKM8, SAPK1

Gene Description mitogen-activated protein kinase 8

Omim ID [601158](#)

Gene Ontology [Hyperlink](#)

## Gene Summary

The protein encoded by this gene is a member of the MAP kinase family. MAP kinases act as an integration point for multiple biochemical signals, and are involved in a wide variety of cellular processes such as proliferation, differentiation, transcription regulation and development. This kinase is activated by various cell stimuli, and targets specific transcription factors, and thus mediates immediate-early gene expression in response to cell stimuli. The activation of this kinase by tumor necrosis factor alpha (TNF-alpha) is found to be required for TNF-alpha induced apoptosis. This kinase is also involved in UV radiation induced apoptosis, which is thought to be related to cytochrome c-mediated cell death pathway. Studies of the mouse counterpart of this gene suggested that this kinase play a key role in T cell proliferation, apoptosis and differentiation. Four alternatively spliced transcript variants encoding distinct isoforms have been reported. [provided by RefSeq]

## Other Designations

JNK1 alpha protein kinase|JNK1 beta protein kinase|JUN N-terminal kinase|OTTHUMP00000019552|OTTHUMP00000019555|OTTHUMP00000019556|OTTHUMP00000019558|c-Jun N-terminal kinase 1|mitogen-activated protein kinase 8 isoform JNK1 alpha1|mitogen-activated protein

## Publication Reference

- [Phosphorylation of Glutathione S-Transferase P1 \(GSTP1\) by Epidermal Growth Factor Receptor \(EGFR\) Promotes Formation of the GSTP1-c-Jun N-terminal kinase \(JNK\) Complex and Suppresses JNK Downstream Signaling and Apoptosis in Brain Tumor Cells.](#)

Okamura T, Antoun G, Keir ST, Friedman H, Bigner DD, Ali-Osman F.

The Journal of Biological Chemistry 2015 Dec; 290(52):30866.

Application: PLA, Human, UW228 cells

## Pathway

- [Adipocytokine signaling pathway](#)
- [Colorectal cancer](#)
- [Epithelial cell signaling in Helicobacter pylori infection](#)
- [ErbB signaling pathway](#)
- [Fc epsilon RI signaling pathway](#)
- [Focal adhesion](#)
- [GnRH signaling pathway](#)
- [Insulin signaling pathway](#)
- [MAPK signaling pathway](#)
- [Neurotrophin signaling pathway](#)

- [Pancreatic cancer](#)
- [Pathways in cancer](#)
- [Toll-like receptor signaling pathway](#)
- [Type II diabetes mellitus](#)
- [Wnt signaling pathway](#)

## Disease

- [Breast cancer](#)
- [Breast Neoplasms](#)
- [Cardiovascular Diseases](#)
- [Diabetes Mellitus](#)
- [Edema](#)
- [Genetic Predisposition to Disease](#)
- [HIV Infections](#)