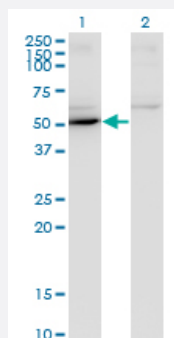


# MAPK8 monoclonal antibody (M07), clone 4H6

Catalog # H00005599-M07

Size 100 ug

## Applications

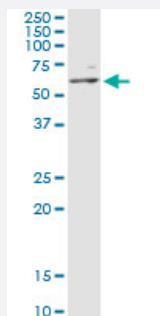


### Western Blot (Transfected lysate)

Western Blot analysis of MAPK8 expression in transfected 293T cell line by MAPK8 monoclonal antibody (M07), clone 4H6.

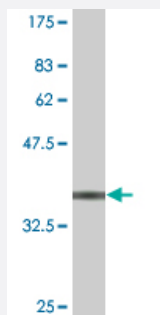
Lane 1: MAPK8 transfected lysate (48.3 KDa).

Lane 2: Non-transfected lysate.



### Immunoprecipitation

Immunoprecipitation of MAPK8 transfected lysate using anti-MAPK8 monoclonal antibody and Protein A Magnetic Bead, and immunoblotted with MAPK8 MaxPab rabbit polyclonal antibody.



Western Blot detection against Immunogen (38.21 KDa) .

## Specification

### Product Description

Mouse monoclonal antibody raised against a partial recombinant MAPK8.

<b>Immunogen</b>	MAPK8 (NP_620637, 318 a.a. ~ 427 a.a) partial recombinant protein with GST tag. MW of the GST tag alone is 26 KDa.
<b>Sequence</b>	HPYINVWYDPSEAEAPPPKIPDKQLDEREHTIEEWKELIYKEVMDLEERTKNGVIRGQPSPLGAAVINGSQHPSSSSSVNDVSSMSTDPTLASD TDSSLEAAAGPLGCCR
<b>Host</b>	Mouse
<b>Reactivity</b>	Human
<b>Isotype</b>	IgG2a Kappa
<b>Quality Control Testing</b>	Antibody Reactive Against Recombinant Protein. Western Blot detection against Immunogen (38.21 KDa) .
<b>Storage Buffer</b>	In 1x PBS, pH 7.4
<b>Storage Instruction</b>	Store at -20°C or lower. Aliquot to avoid repeated freezing and thawing.

## Applications

- Western Blot (Transfected lysate)

Western Blot analysis of MAPK8 expression in transfected 293T cell line by MAPK8 monoclonal antibody (M07), clone 4H6.

Lane 1: MAPK8 transfected lysate(48.3 KDa).

Lane 2: Non-transfected lysate.

[Protocol Download](#)

- Western Blot (Recombinant protein)

[Protocol Download](#)

- Immunoprecipitation

Immunoprecipitation of MAPK8 transfected lysate using anti-MAPK8 monoclonal antibody and Protein A Magnetic Bead, and immunoblotted with MAPK8 MaxPab rabbit polyclonal antibody.

[Protocol Download](#)

- ELISA

## Gene Info — MAPK8

Entrez GeneID [5599](#)

GeneBank Accession#	<a href="#">NM_139049</a>
Protein Accession#	<a href="#">NP_620637</a>
Gene Name	MAPK8
Gene Alias	JNK, JNK1, JNK1A2, JNK21B1/2, PRKM8, SAPK1
Gene Description	mitogen-activated protein kinase 8
Omim ID	<a href="#">601158</a>
Gene Ontology	<a href="#">Hyperlink</a>
Gene Summary	<p>The protein encoded by this gene is a member of the MAP kinase family. MAP kinases act as an integration point for multiple biochemical signals, and are involved in a wide variety of cellular processes such as proliferation, differentiation, transcription regulation and development. This kinase is activated by various cell stimuli, and targets specific transcription factors, and thus mediates immediate-early gene expression in response to cell stimuli. The activation of this kinase by tumor-necrosis factor alpha (TNF-alpha) is found to be required for TNF-alpha induced apoptosis. This kinase is also involved in UV radiation induced apoptosis, which is thought to be related to cytochrome c-mediated cell death pathway. Studies of the mouse counterpart of this gene suggested that this kinase play a key role in T cell proliferation, apoptosis and differentiation. Four alternatively spliced transcript variants encoding distinct isoforms have been reported. [provided by RefSeq]</p>
Other Designations	JNK1 alpha protein kinase JNK1 beta protein kinase JUN N-terminal kinase OTTHUMP00000019552 OTTHUMP00000019555 OTTHUMP00000019556 OTTHUMP00000019558 c-Jun N-terminal kinase 1 mitogen-activated protein kinase 8 isoform JNK1 alpha1 mitogen-activated protein

## Pathway

- [Adipocytokine signaling pathway](#)
- [Colorectal cancer](#)
- [Epithelial cell signaling in Helicobacter pylori infection](#)
- [ErbB signaling pathway](#)
- [Fc epsilon RI signaling pathway](#)
- [Focal adhesion](#)
- [GnRH signaling pathway](#)
- [Insulin signaling pathway](#)
- [MAPK signaling pathway](#)

- [Neurotrophin signaling pathway](#)
- [Pancreatic cancer](#)
- [Pathways in cancer](#)
- [Toll-like receptor signaling pathway](#)
- [Type II diabetes mellitus](#)
- [Wnt signaling pathway](#)

## Disease

- [Breast cancer](#)
- [Breast Neoplasms](#)
- [Cardiovascular Diseases](#)
- [Diabetes Mellitus](#)
- [Edema](#)
- [Genetic Predisposition to Disease](#)
- [HIV Infections](#)