

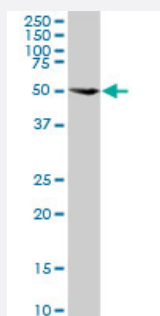
MaxPab®

MAPK8 purified MaxPab rabbit polyclonal antibody (D01P)

Catalog # H00005599-D01P

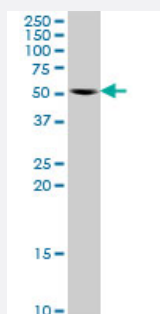
Size 100 ug

Applications



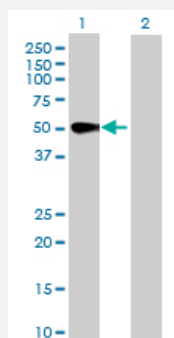
Western Blot (Tissue lysate)

MAPK8 MaxPab rabbit polyclonal antibody. Western Blot analysis of MAPK8 expression in mouse lung.



Western Blot (Cell lysate)

MAPK8 MaxPab rabbit polyclonal antibody. Western Blot analysis of MAPK8 expression in HeLa.

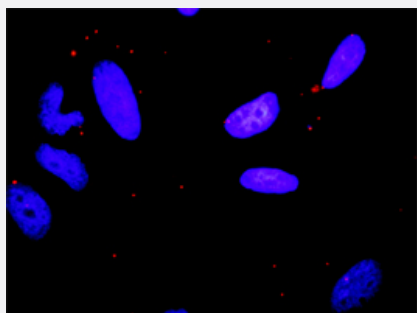


Western Blot (Transfected lysate)

Western Blot analysis of MAPK8 expression in transfected 293T cell line ([H00005599-T01](#)) by MAPK8 MaxPab polyclonal antibody.

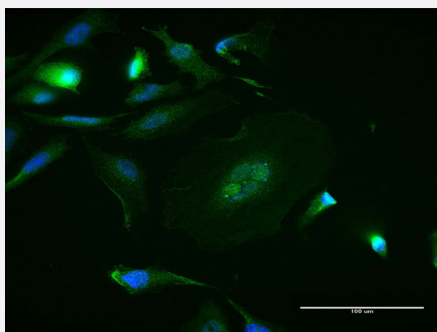
Lane 1: MAPK8 transfected lysate(48.30 KDa).

Lane 2: Non-transfected lysate.



In situ Proximity Ligation Assay (Cell)

Proximity Ligation Analysis of protein-protein interactions between MAPK8 and FASLG. HeLa cells were stained with anti-MAPK8 rabbit purified polyclonal 1:1200 and anti-FASLG mouse monoclonal antibody 1:50. Each red dot represents the detection of protein-protein interaction complex, and nuclei were counterstained with DAPI (blue).



Immunofluorescence

Immunofluorescence of purified MaxPab antibody to MAPK8 on HeLa cell.
[antibody concentration 10 ug/ml]

Specification

Product Description	Rabbit polyclonal antibody raised against a full-length human MAPK8 protein.
Immunogen	MAPK8 (NP_620637.1, 1 a.a. ~ 427 a.a) full-length human protein.
Sequence	MSRSKRDNNFYSVEIGDSTFTVLKRYQNLKPIGSGAQGVCAAYDAILERNVAIKKLSRPFQNQTHAKRAYRELVLKMCVNHKNIIGLLNVFTPQKSLEEFQDVYVIMELMDANLCQVIQMELDHERMSYLLYQMLCGIKHLHSAGIIHRDLKPSNIVKSDCTLKILDFGLARTAGTSFMMTPYVVTRYRAPEVILGMGYKENVDLWSVGCIMGEMVCHKILFPGRDYIDQWNKVIEQLGTPCPEFMKKLQPTVRTYVENRPKYAGYSFEKLFDPDLFPADSEHNKLKASQARDLLSKMLVIDASKRISVDEALQHPYINWYDPSEAEAPPPKIPDKQLDEREHTIEEWKELIYKEVMDLEERTKNGVIRGQPSPLGAAVINGSQHPSSSSSVNDVSSMSTDPTLASDTDSSLEAAAGPLGCCR
Host	Rabbit
Reactivity	Human, Mouse
Quality Control Testing	Antibody reactive against mammalian transfected lysate.
Storage Buffer	In 1x PBS, pH 7.4
Storage Instruction	Store at -20°C or lower. Aliquot to avoid repeated freezing and thawing.

Applications

- Western Blot (Tissue lysate)

MAPK8 MaxPab rabbit polyclonal antibody. Western Blot analysis of MAPK8 expression in mouse lung.

[Protocol Download](#)

- Western Blot (Cell lysate)

MAPK8 MaxPab rabbit polyclonal antibody. Western Blot analysis of MAPK8 expression in HeLa.

[Protocol Download](#)

- Western Blot (Transfected lysate)

Western Blot analysis of MAPK8 expression in transfected 293T cell line ([H00005599-T01](#)) by MAPK8 MaxPab polyclonal antibody.

Lane 1: MAPK8 transfected lysate(48.30 KDa).

Lane 2: Non-transfected lysate.

[Protocol Download](#)

- In situ* Proximity Ligation Assay (Cell)

Proximity Ligation Analysis of protein-protein interactions between MAPK8 and FASLG. HeLa cells were stained with anti-MAPK8 rabbit purified polyclonal 1:1200 and anti-FASLG mouse monoclonal antibody 1:50. Each red dot represents the detection of protein-protein interaction complex, and nuclei were counterstained with DAPI (blue).

- Immunofluorescence

Immunofluorescence of purified MaxPab antibody to MAPK8 on HeLa cell. [antibody concentration 10 ug/ml]

Gene Info — MAPK8

Entrez GeneID	5599
---------------	----------------------

GeneBank Accession#	NM_139049
---------------------	---------------------------

Protein Accession#	NP_620637.1
--------------------	-----------------------------

Gene Name	MAPK8
-----------	-------

Gene Alias	JNK, JNK1, JNK1A2, JNK21B1/2, PRKM8, SAPK1
------------	--

Gene Description	mitogen-activated protein kinase 8
------------------	------------------------------------

Omim ID	601158
---------	------------------------

Gene Ontology	Hyperlink
---------------	---------------------------

Gene Summary

The protein encoded by this gene is a member of the MAP kinase family. MAP kinases act as an integration point for multiple biochemical signals, and are involved in a wide variety of cellular processes such as proliferation, differentiation, transcription regulation and development. This kinase is activated by various cell stimuli, and targets specific transcription factors, and thus mediates immediate-early gene expression in response to cell stimuli. The activation of this kinase by tumor necrosis factor alpha (TNF-alpha) is found to be required for TNF-alpha induced apoptosis. This kinase is also involved in UV radiation induced apoptosis, which is thought to be related to cytochrome c-mediated cell death pathway. Studies of the mouse counterpart of this gene suggested that this kinase play a key role in T cell proliferation, apoptosis and differentiation. Four alternatively spliced transcript variants encoding distinct isoforms have been reported. [provided by RefSeq]

Other Designations

JNK1 alpha protein kinase|JNK1 beta protein kinase|JUN N-terminal kinase|OTTHUMP00000019552|OTTHUMP00000019555|OTTHUMP00000019556|OTTHUMP00000019558|c-Jun N-terminal kinase 1|mitogen-activated protein kinase 8 isoform JNK1 alpha1|mitogen-activated protein

Pathway

- [Adipocytokine signaling pathway](#)
- [Colorectal cancer](#)
- [Epithelial cell signaling in Helicobacter pylori infection](#)
- [ErbB signaling pathway](#)
- [Fc epsilon RI signaling pathway](#)
- [Focal adhesion](#)
- [GnRH signaling pathway](#)
- [Insulin signaling pathway](#)
- [MAPK signaling pathway](#)
- [Neurotrophin signaling pathway](#)
- [Pancreatic cancer](#)
- [Pathways in cancer](#)
- [Toll-like receptor signaling pathway](#)
- [Type II diabetes mellitus](#)
- [Wnt signaling pathway](#)

Disease

- [Breast cancer](#)
- [Breast Neoplasms](#)
- [Cardiovascular Diseases](#)
- [Diabetes Mellitus](#)
- [Edema](#)
- [Genetic Predisposition to Disease](#)
- [HIV Infections](#)