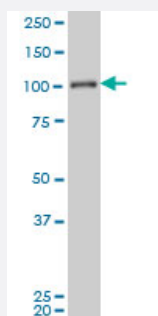


# MAPK6 monoclonal antibody (M02A), clone 4C11

Catalog # H00005597-M02A

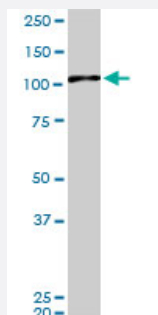
Size 200 uL

## Applications



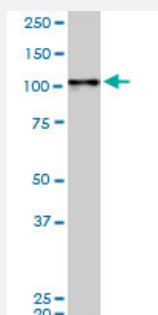
### Western Blot (Cell lysate)

MAPK6 monoclonal antibody (M02A), clone 4C11 Western Blot analysis of MAPK6 expression in Jurkat ( Cat # L017V1 ).



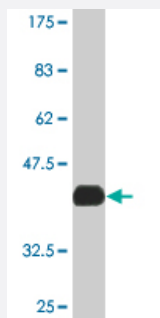
### Western Blot (Cell lysate)

MAPK6 monoclonal antibody (M02A), clone 4C11. Western Blot analysis of MAPK6 expression in PC-12(Cat # L012V1 ).



### Western Blot (Cell lysate)

MAPK6 monoclonal antibody (M02A), clone 4C11. Western Blot analysis of MAPK6 expression in Raw 264.7(Cat # L024V1 ).



Western Blot detection against Immunogen (37.84 KDa) .

## Specification

<b>Product Description</b>	Mouse monoclonal antibody raised against a partial recombinant MAPK6.
<b>Immunogen</b>	MAPK6 (AAH35492, 612 a.a. ~ 721 a.a) partial recombinant protein with GST tag. MW of the GST tag alone is 26 KDa.
<b>Sequence</b>	EV RKDEQVEKENTYTSYLDKFFSRKEDTEMLETEPVEDGKLGERGHEEGFLNNSGEFLFNKQLE SIGIPQFHSPVGSPLKSIQATLTSPAMKSSPQIPHQTYSSILKHLN
<b>Host</b>	Mouse
<b>Reactivity</b>	Human, Mouse, Rat
<b>Interspecies Antigen Sequence</b>	Mouse (86); Rat (85)
<b>Isotype</b>	IgG2b Kappa
<b>Quality Control Testing</b>	Antibody Reactive Against Recombinant Protein. Western Blot detection against Immunogen (37.84 KDa) .
<b>Storage Buffer</b>	In ascites fluid
<b>Storage Instruction</b>	Store at -20°C or lower. Aliquot to avoid repeated freezing and thawing.

## Applications

- Western Blot (Cell lysate)

MAPK6 monoclonal antibody (M02A), clone 4C11 Western Blot analysis of MAPK6 expression in Jurkat ( Cat # L017V1 ).

[Protocol Download](#)

- Western Blot (Cell lysate)

MAPK6 monoclonal antibody (M02A), clone 4C11. Western Blot analysis of MAPK6 expression in PC-12(Cat # L012V1 ).

[Protocol Download](#)

- Western Blot (Cell lysate)

MAPK6 monoclonal antibody (M02A), clone 4C11. Western Blot analysis of MAPK6 expression in Raw 264.7(Cat # L024V1 ).

[Protocol Download](#)

- Western Blot (Recombinant protein)

[Protocol Download](#)

- ELISA

## Gene Info — MAPK6

Entrez GeneID [5597](#)

GeneBank Accession# [BC035492](#)

Protein Accession# [AAH35492](#)

Gene Name MAPK6

Gene Alias DKFZp686F03189, ERK3, HsT17250, PRKM6, p97MAPK

Gene Description mitogen-activated protein kinase 6

Omim ID [602904](#)

Gene Ontology [Hyperlink](#)

**Gene Summary** The protein encoded by this gene is a member of the Ser/Thr protein kinase family, and is most closely related to mitogen-activated protein kinases (MAP kinases). MAP kinases also known as extracellular signal-regulated kinases (ERKs), are activated through protein phosphorylation cascades and act as integration points for multiple biochemical signals. This kinase is localized in the nucleus, and has been reported to be activated in fibroblasts upon treatment with serum or phorbol esters. [provided by RefSeq]

**Other Designations** MAP kinase isoform p97|extracellular signal-regulated kinase 3|extracellular signal-regulated kinase, p97|protein kinase, mitogen-activated 5|protein kinase, mitogen-activated 6

## Pathway

- [MAPK signaling pathway](#)