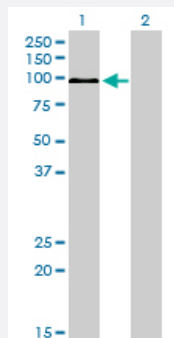


MAPK6 monoclonal antibody (M01), clone 1G6

Catalog # H00005597-M01

Size 100 ug

Applications

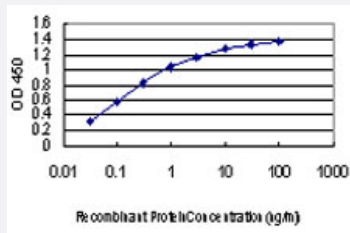


Western Blot (Transfected lysate)

Western Blot analysis of MAPK6 expression in transfected 293T cell line by MAPK6 monoclonal antibody (M01), clone 1G6.

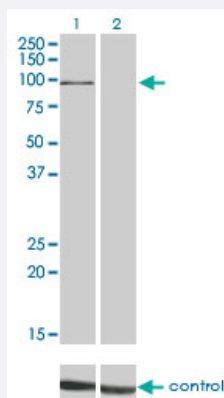
Lane 1: MAPK6 transfected lysate (82.7 kDa).

Lane 2: Non-transfected lysate.



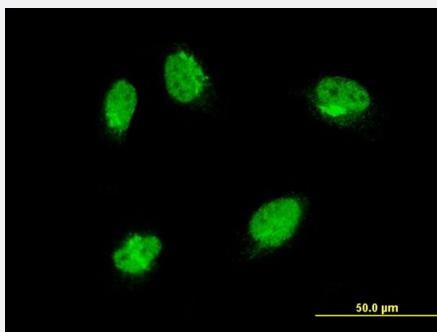
Sandwich ELISA (Recombinant protein)

Detection limit for recombinant GST tagged MAPK6 is approximately 0.03 ng/ml as a capture antibody.



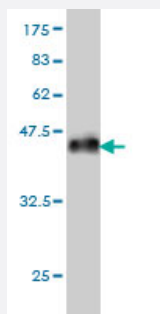
RNAi Knockdown (Antibody validated)

Western blot analysis of MAPK6 over-expressed 293 cell line, cotransfected with MAPK6 Validated Chimera RNAi (Cat # H00005597-R01V) (Lane 2) or non-transfected control (Lane 1). Blot probed with MAPK6 monoclonal antibody (M01) clone 1G6 (Cat # H00005597-M01). GAPDH (36.1 kDa) used as specificity and loading control.



Immunofluorescence

Immunofluorescence of monoclonal antibody to MAPK6 on HeLa cell .
[antibody concentration 10 ug/ml]



Western Blot detection against Immunogen (37.84 KDa) .

Specification

Product Description	Mouse monoclonal antibody raised against a partial recombinant MAPK6.
Immunogen	MAPK6 (AAH35492, 612 a.a. ~ 721 a.a) partial recombinant protein with GST tag. MW of the GST tag alone is 26 KDa.
Sequence	EVRKDEQVEKENTYTSYLDKFFSRKEDTEMLETEPVEDGKLGERGHEEGFLNNSGEFLFNKQLE SIGIPQFHSPVGSPLKSIQATLTSPAMKSSPQIPHQTYSSILKHLN
Host	Mouse
Reactivity	Human
Interspecies Antigen Sequence	Mouse (86); Rat (85)
Isotype	IgG2a Kappa
Quality Control Testing	Antibody Reactive Against Recombinant Protein. Western Blot detection against Immunogen (37.84 KDa) .
Storage Buffer	In 1x PBS, pH 7.4
Storage Instruction	Store at -20°C or lower. Aliquot to avoid repeated freezing and thawing.

Applications

- Western Blot (Transfected lysate)

Western Blot analysis of MAPK6 expression in transfected 293T cell line by MAPK6 monoclonal antibody (M01), clone 1G6.

Lane 1: MAPK6 transfected lysate(82.7 KDa).

Lane 2: Non-transfected lysate.

[Protocol Download](#)

- Western Blot (Recombinant protein)

[Protocol Download](#)

- Sandwich ELISA (Recombinant protein)

Detection limit for recombinant GST tagged MAPK6 is approximately 0.03ng/ml as a capture antibody.

[Protocol Download](#)

- ELISA

- RNAi Knockdown (Antibody validated)

Western blot analysis of MAPK6 over-expressed 293 cell line, cotransfected with MAPK6 Validated Chimera RNAi (Cat # H00005597-R01V) (Lane 2) or non-transfected control (Lane 1). Blot probed with MAPK6 monoclonal antibody (M01) clone 1G6 (Cat # H00005597-M01). GAPDH (36.1 kDa) used as specificity and loading control.

[Protocol Download](#)

- Immunofluorescence

Immunofluorescence of monoclonal antibody to MAPK6 on HeLa cell . [antibody concentration 10 ug/ml]

Gene Info — MAPK6

Entrez GeneID	5597
---------------	----------------------

GeneBank Accession#	BC035492
---------------------	--------------------------

Protein Accession#	AAH35492
--------------------	--------------------------

Gene Name	MAPK6
-----------	-------

Gene Alias	DKFZp686F03189, ERK3, HsT17250, PRKM6, p97MAPK
------------	--

Gene Description	mitogen-activated protein kinase 6
Omim ID	602904
Gene Ontology	Hyperlink
Gene Summary	<p>The protein encoded by this gene is a member of the Ser/Thr protein kinase family, and is most closely related to mitogen-activated protein kinases (MAP kinases). MAP kinases also known as extracellular signal-regulated kinases (ERKs), are activated through protein phosphorylation cascades and act as integration points for multiple biochemical signals. This kinase is localized in the nucleus, and has been reported to be activated in fibroblasts upon treatment with serum or phorbol esters. [provided by RefSeq]</p>
Other Designations	MAP kinase isoform p97 extracellular signal-regulated kinase 3 extracellular signal-regulated kinase, p97 protein kinase, mitogen-activated 5 protein kinase, mitogen-activated 6

Pathway

- [MAPK signaling pathway](#)