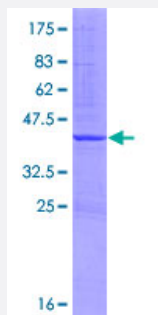


# MAPK4 (Human) Recombinant Protein (Q01)

Catalog # H00005596-Q01

Size 25 ug, 10 ug

## Applications



## Specification

|                               |   |
|-------------------------------|---|
| Product Description           | Human MAPK4 partial ORF ( NP_002738, 42 a.a. - 151 a.a.) recombinant protein with GST-tag at N-terminal.        |
| Sequence                      | ACRKVAVKKIALSDARSMKHALREIKIIRRLDHDNVKVYEVLPKGTDLQGELFKFSVAYVQEYME<br>TDLARLLEQGTLAEEHAKLFMYQLLRGLKYIHSANVLHRDLK |
| Host                          | Wheat Germ (in vitro)   |
| Theoretical MW (kDa)          | 37.84   |
| Interspecies Antigen Sequence | Mouse (95); Rat (96)  |
| Preparation Method            | <a href="#">in vitro wheat germ expression system</a>   |
| Purification                  | Glutathione Sepharose 4 Fast Flow   |
| Quality Control Testing       | 12.5% SDS-PAGE Stained with Coomassie Blue.   |
| Storage Buffer                | 50 mM Tris-HCl, 10 mM reduced Glutathione, pH=8.0 in the elution buffer.  |
| Storage Instruction           | Store at -80°C. Aliquot to avoid repeated freezing and thawing.   |
| Note                          | Best use within three months from the date of receipt of this protein.  |

## Applications

- Enzyme-linked Immunoabsorbent Assay
- Western Blot (Recombinant protein)
- Antibody Production
- Protein Array

## Gene Info — MAPK4

|                     |   |
|---------------------|---|
| Entrez GeneID       | <a href="#">5596</a>  |
| GeneBank Accession# | <a href="#">NM_002747</a>   |
| Protein Accession#  | <a href="#">NP_002738</a>   |
| Gene Name           | MAPK4   |
| Gene Alias          | ERK3, Erk4, PRKM4, p63MAPK  |
| Gene Description    | mitogen-activated protein kinase 4  |
| Omim ID             | <a href="#">176949</a>  |
| Gene Ontology       | <a href="#">Hyperlink</a>   |
| Gene Summary        | Mitogen-activated protein kinase 4 is a member of the mitogen-activated protein kinase family. Tyrosine kinase growth factor receptors activate mitogen-activated protein kinases which then translocate into the nucleus where it phosphorylates nuclear targets. [provided by RefSeq] |
| Other Designations  | Erk3-related  |

## Pathway

- [MAPK signaling pathway](#)