

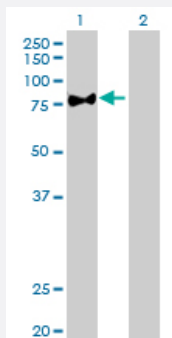
MaxPab®

PRKCZ purified MaxPab rabbit polyclonal antibody (D01P)

Catalog # H00005590-D01P

Size 100 ug

Applications

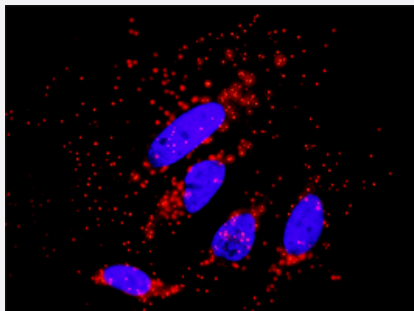


Western Blot (Transfected lysate)

Western Blot analysis of PRKCZ expression in transfected 293T cell line ([H00005590-T01](#)) by PRKCZ MaxPab polyclonal antibody.

Lane 1: PRKCZ transfected lysate (67.70 kDa).

Lane 2: Non-transfected lysate.



In situ Proximity Ligation Assay (Cell)

Proximity Ligation Analysis of protein-protein interactions between PRKCZ and AKT3. HeLa cells were stained with anti-PRKCZ rabbit purified polyclonal 1:1200 and anti-AKT3 mouse monoclonal antibody 1:50. Each red dot represents the detection of protein-protein interaction complex, and nuclei were counterstained with DAPI (blue).

Specification

Product Description

Rabbit polyclonal antibody raised against a full-length human PRKCZ protein.

Immunogen

PRKCZ (NP_002735.3, 1 a.a. ~ 592 a.a) full-length human protein.

Sequence	MPSRTGPKMEGSGGRVRLKAHYGGDIFITSVDAATTFEELCEEVRDMCRLHQQHPLTLKWVDSE GDPCTVSSQMELEEAFRLARQCRDEGLIHVFPSTPEQPLPCPGEDKSIYRRGARRWRKLYRAN GHLFQAKRFNRRAYCGQCSERWGLARQGYRCINCKLLVHKRCHGLVPLTCRKHMDSVMPSQEP PVDDKNEDADLPSEETDGIAYISSSRKHDSIKDDSEDLKPVIDGMDGIKISQGLGLQDFDLIRVIGR GSYAKVLLVRLKKNDQYAMKVVKELVHDDDEDIDWVQTEKHVFEQASSNPFLVGLHSCFQTTSR LFLVIEYVNGGDLMFHMQRQRKLPEEHARFYAAEICIALNFLHERGIYRDLKLDNVLLDADGHIKLT DYGMCKEGLGPGDTTSTFCGTPNYIAPEILRGEYGFSDWWALGVLMFEMMAGRSPFDIITDNP DMNTEDYLFQVILEKPIRIPRFLSVKASHVLKGFLNKDPKERLGCRPQTGFSDIKSHAFFRSIDWDL LEKKQALPPFQPQITDDYGLDNFDTQFTSEPVQLTPDDEDAIKRIDQSEFEGFEYINPLLLSTEEVS
Host	Rabbit
Reactivity	Human
Interspecies Antigen Sequence	Mouse (96); Rat (96)
Quality Control Testing	Antibody reactive against mammalian transfected lysate.
Storage Buffer	In 1x PBS, pH 7.4
Storage Instruction	Store at -20°C or lower. Aliquot to avoid repeated freezing and thawing.

Applications

- Western Blot (Transfected lysate)

Western Blot analysis of PRKCZ expression in transfected 293T cell line ([H00005590-T01](#)) by PRKCZ MaxPab polyclonal antibody.

Lane 1: PRKCZ transfected lysate(67.70 KDa).

Lane 2: Non-transfected lysate.

[Protocol Download](#)

- In situ* Proximity Ligation Assay (Cell)

Proximity Ligation Analysis of protein-protein interactions between PRKCZ and AKT3. HeLa cells were stained with anti-PRKCZ rabbit purified polyclonal 1:1200 and anti-AKT3 mouse monoclonal antibody 1:50. Each red dot represents the detection of protein-protein interaction complex, and nuclei were counterstained with DAPI (blue).

Gene Info — PRKCZ

Entrez GeneID	5590
GeneBank Accession#	NM_002744.4
Protein Accession#	NP_002735.3

Gene Name	PRKCZ
Gene Alias	PKC-ZETA, PKC2
Gene Description	protein kinase C, zeta
Omim ID	176982
Gene Ontology	Hyperlink
Gene Summary	<p>Protein kinase C (PKC) zeta is a member of the PKC family of serine/threonine kinases which are involved in a variety of cellular processes such as proliferation, differentiation and secretion. Unlike the classical PKC isoenzymes which are calcium-dependent, PKC zeta exhibits a kinase activity which is independent of calcium and diacylglycerol but not of phosphatidylserine. Furthermore, it is insensitive to typical PKC inhibitors and cannot be activated by phorbol ester. Unlike the classical PKC isoenzymes, it has only a single zinc finger module. These structural and biochemical properties indicate that the zeta subspecies is related to, but distinct from other isoenzymes of PKC. Alternative splicing results in multiple transcript variants encoding different isoforms. [provided by RefSeq]</p>
Other Designations	OTTHUMP00000001368 OTTHUMP00000044160

Pathway

- [Chemokine signaling pathway](#)
- [Endocytosis](#)
- [Insulin signaling pathway](#)
- [Tight junction](#)
- [Type II diabetes mellitus](#)

Disease

- [Cardiovascular Diseases](#)
- [Diabetes Mellitus](#)
- [Edema](#)
- [Genetic Predisposition to Disease](#)