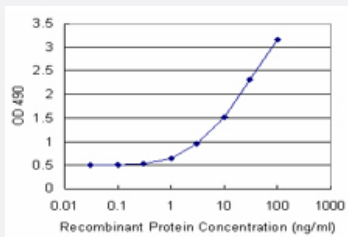


PRKCSH (Human) Matched Antibody Pair

Catalog # H00005589-AP21

Size 1 Set

Applications



Sandwich ELISA detection sensitivity ranging from 1 ng/ml to 100 ng/ml.

Specification

Product Description	This antibody pair set comes with a matched antibody pair to detect and quantify the protein level of human PRKCSH.
Reactivity	Human
Quality Control Testing	Standard curve using recombinant protein (H00005589-P02) as an analyte. Sandwich ELISA detection sensitivity ranging from 1 ng/ml to 100 ng/ml.
Supplied Product	Antibody pair set content: 1. Capture antibody: rabbit MaxPab® affinity purified polyclonal anti-PRKCSH (100 ug) 2. Detection antibody: mouse purified polyclonal anti-PRKCSH (20 ug) *Reagents are sufficient for at least 1-2 x 96 well plates using recommended protocols.
Storage Instruction	Store reagents of the antibody pair set at -20°C or lower. Please aliquot to avoid repeated freeze thaw cycle. Reagents should be returned to -20°C storage immediately after use.

Applications

- ELISA Pair (Recombinant protein)

[Protocol Download](#)

Gene Info — PRKCSH

Entrez GeneID	5589
Gene Name	PRKCSH
Gene Alias	AGE-R2, G19P1, PCLD, PLD1
Gene Description	protein kinase C substrate 80K-H
Omim ID	174050 177060
Gene Ontology	Hyperlink
Gene Summary	This gene encodes the beta-subunit of glucosidase II, an N-linked glycan-processing enzyme in the endoplasmic reticulum (ER). This protein is an acidic phospho-protein known to be a substrate for protein kinase C. Mutations in this gene have been associated with the autosomal dominant polycystic liver disease (PCLD). Alternatively spliced transcript variants encoding distinct isoforms have been observed. [provided by RefSeq]
Other Designations	AGE-binding receptor 2 glucosidase II, beta subunit hepatocystin protein kinase C substrate, 80 Kda protein

Disease

- [Cysts](#)
- [Diabetes Mellitus](#)
- [Diabetic Nephropathies](#)
- [Genetic Predisposition to Disease](#)
- [Liver Diseases](#)