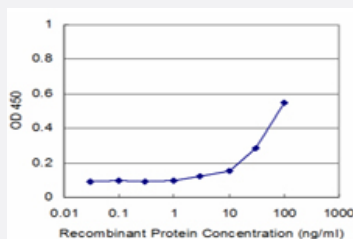


PKN1 monoclonal antibody (M02), clone 1A4

Catalog # H00005585-M02

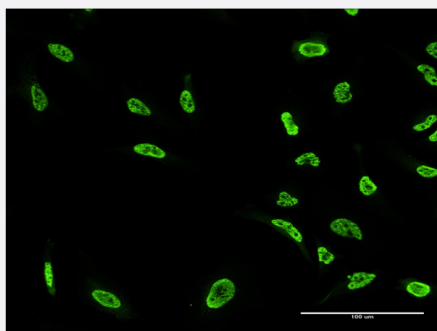
Size 100 ug

Applications



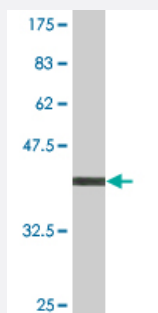
Sandwich ELISA (Recombinant protein)

Detection limit for recombinant GST tagged PKN1 is approximately 3ng/ml as a capture antibody.



Immunofluorescence

Immunofluorescence of monoclonal antibody to PKN1 on HeLa cell . [antibody concentration 10 ug/ml]



Western Blot detection against Immunogen (42.57 KDa) .

Specification

Product Description

Mouse monoclonal antibody raised against a partial recombinant PKN1.

Immunogen	PKN1 (AAH40061, 462 a.a. ~ 615 a.a) partial recombinant protein with GST tag. MW of the GST tag alone is 26 KDa.
Sequence	LDMEPQGCLVAEVTFRNPVIERIPRLRRQKKIFSKQQGKAFQRRARQMNDVATWVRLRLRLIPNAT GTGTFSPGASPGSEARTTGDISVEKLNLTGDSQSSPQKSSRDPPSSSSLSSPIQESTAPELPSE TQETPGPALCSPLRKSPLEDF
Host	Mouse
Reactivity	Human
Isotype	IgG2a Kappa
Quality Control Testing	Antibody Reactive Against Recombinant Protein. Western Blot detection against Immunogen (42.57 KDa) .
Storage Buffer	In 1x PBS, pH 7.4
Storage Instruction	Store at -20°C or lower. Aliquot to avoid repeated freezing and thawing.

Applications

- Western Blot (Recombinant protein)

[Protocol Download](#)

- Sandwich ELISA (Recombinant protein)

Detection limit for recombinant GST tagged PKN1 is approximately 3ng/ml as a capture antibody.

[Protocol Download](#)

- ELISA

- Immunofluorescence

Immunofluorescence of monoclonal antibody to PKN1 on HeLa cell . [antibody concentration 10 ug/ml]

Gene Info — PKN1

Entrez GeneID	5585
GeneBank Accession#	BC040061
Protein Accession#	AAH40061

Gene Name	PKN1
Gene Alias	DBK, MGC46204, PAK1, PKN, PKN-ALPHA, PRK1, PRKCL1
Gene Description	protein kinase N1
Omim ID	601032
Gene Ontology	Hyperlink
Gene Summary	<p>The protein encoded by this gene belongs to the protein kinase C superfamily. This kinase is activated by Rho family of small G proteins and may mediate the Rho-dependent signaling pathway. This kinase can be activated by phospholipids and by limited proteolysis. The 3-phosphoinositide dependent protein kinase-1 (PDPK1/PDK1) is reported to phosphorylate this kinase, which may mediate insulin signals to the actin cytoskeleton. The proteolytic activation of this kinase by caspase-3 or related proteases during apoptosis suggests its role in signal transduction related to apoptosis. Alternatively spliced transcript variants encoding distinct isoforms have been observed. [provided by RefSeq]</p>
Other Designations	protein kinase C-like 1 protein kinase C-like PKN protein kinase C-related kinase 1 serine-threonine kinase N serine/threonine protein kinase N

Disease

- [Cardiovascular Diseases](#)
- [Diabetes Mellitus](#)
- [Edema](#)