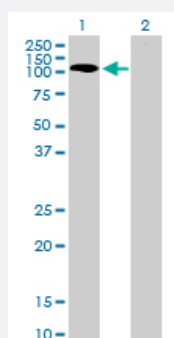


PKN1 monoclonal antibody (M01), clone 1B10

Catalog # H00005585-M01

Size 100 ug

Applications

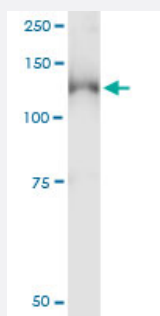


Western Blot (Transfected lysate)

Western Blot analysis of PKN1 expression in transfected 293T cell line by PKN1 monoclonal antibody (M01), clone 1B10.

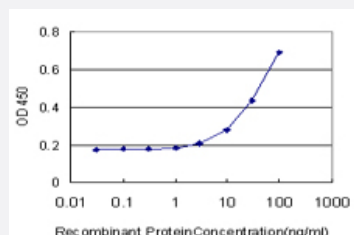
Lane 1: PKN1 transfected lysate (103.9 kDa).

Lane 2: Non-transfected lysate.



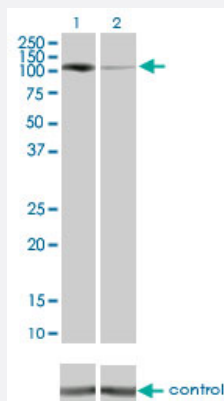
Immunoprecipitation

Immunoprecipitation of PKN1 transfected lysate using anti-PKN1 monoclonal antibody and Protein A Magnetic Bead, and immunoblotted with PKN1 monoclonal antibody.



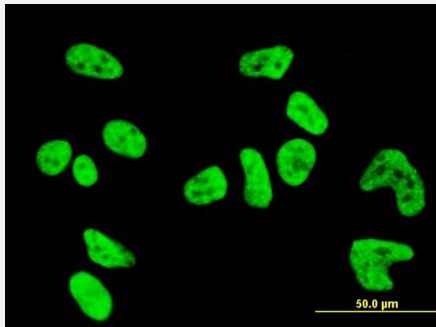
Sandwich ELISA (Recombinant protein)

Detection limit for recombinant GST tagged PKN1 is approximately 3 ng/ml as a capture antibody.



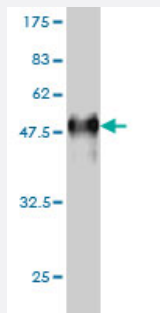
RNAi Knockdown (Antibody validated)

Western blot analysis of PKN1 over-expressed 293 cell line, cotransfected with PKN1 Validated Chimera RNAi (Cat # H00005585-R01V) (Lane 2) or non-transfected control (Lane 1). Blot probed with PKN1 monoclonal antibody (M01) clone 1B10 (Cat # H00005585-M01). GAPDH (36.1 kDa) used as specificity and loading control.



Immunofluorescence

Immunofluorescence of monoclonal antibody to PKN1 on HeLa cell . [antibody concentration 10 ug/ml]



Western Blot detection against Immunogen (42.57 KDa) .

Specification

Product Description	Mouse monoclonal antibody raised against a partial recombinant PKN1.
Immunogen	PKN1 (AAH40061, 462 a.a. ~ 615 a.a) partial recombinant protein with GST tag. MW of the GST tag alone is 26 KDa.
Sequence	LDMEPQGCLVAEVTFRNPVIERIPRLRRQKKIFSKQQGKAFQRRARQMNIDVATWVRLRLRLIPNATGTGTFSPGASPGSEARTTGDISVEKLNLTGSDSDSSPQKSSRDPPSSPSSLSSPIQESTAPELPSETQETPGPALCSPLRKSPLTLED
Host	Mouse
Reactivity	Human
Isotype	IgG2a Kappa

Quality Control Testing

Antibody Reactive Against Recombinant Protein.
Western Blot detection against Immunogen (42.57 KDa) .

Storage Buffer

In 1x PBS, pH 7.4

Storage Instruction

Store at -20°C or lower. Aliquot to avoid repeated freezing and thawing.

Applications

- Western Blot (Transfected lysate)

Western Blot analysis of PKN1 expression in transfected 293T cell line by PKN1 monoclonal antibody (M01), clone 1B10.

Lane 1: PKN1 transfected lysate(103.9 KDa).

Lane 2: Non-transfected lysate.

[Protocol Download](#)

- Western Blot (Recombinant protein)

[Protocol Download](#)

- Immunoprecipitation

Immunoprecipitation of PKN1 transfected lysate using anti-PKN1 monoclonal antibody and Protein A Magnetic Bead, and immunoblotted with PKN1 monoclonal antibody.

[Protocol Download](#)

- Sandwich ELISA (Recombinant protein)

Detection limit for recombinant GST tagged PKN1 is approximately 3ng/ml as a capture antibody.

[Protocol Download](#)

- ELISA

- RNAi Knockdown (Antibody validated)

Western blot analysis of PKN1 over-expressed 293 cell line, cotransfected with PKN1 Validated Chimera RNAi (Cat # H00005585-R01V) (Lane 2) or non-transfected control (Lane 1). Blot probed with PKN1 monoclonal antibody (M01) clone 1B10 (Cat # H00005585-M01). GAPDH (36.1 kDa) used as specificity and loading control.

[Protocol Download](#)

- Immunofluorescence

Immunofluorescence of monoclonal antibody to PKN1 on HeLa cell . [antibody concentration 10 ug/ml]

Gene Info — PKN1

Entrez GeneID	5585
GeneBank Accession#	BC040061
Protein Accession#	AAH40061
Gene Name	PKN1
Gene Alias	DBK, MGC46204, PAK1, PKN, PKN-ALPHA, PRK1, PRKCL1
Gene Description	protein kinase N1
Omim ID	601032
Gene Ontology	Hyperlink
Gene Summary	<p>The protein encoded by this gene belongs to the protein kinase C superfamily. This kinase is activated by Rho family of small G proteins and may mediate the Rho-dependent signaling pathway. This kinase can be activated by phospholipids and by limited proteolysis. The 3-phosphoinositide dependent protein kinase-1 (PDPK1/PDK1) is reported to phosphorylate this kinase, which may mediate insulin signals to the actin cytoskeleton. The proteolytic activation of this kinase by caspase-3 or related proteases during apoptosis suggests its role in signal transduction related to apoptosis. Alternatively spliced transcript variants encoding distinct isoforms have been observed. [provided by RefSeq]</p>
Other Designations	protein kinase C-like 1 protein kinase C-like PKN protein kinase C-related kinase 1 serine-threonine kinase N serine/threonine protein kinase N

Disease

- [Cardiovascular Diseases](#)
- [Diabetes Mellitus](#)
- [Edema](#)