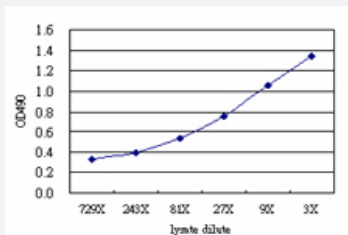


PKN1 (Human) Matched Antibody Pair

Catalog # H00005585-AP51

Size 1 Set

Applications



Sandwich ELISA detection sensitivity ranging from approximately 243x to 3x dilution of the PKN1 293T overexpression lysate (non-denatured).

Specification

Product Description	This antibody pair set comes with a matched antibody pair to detect and quantify the protein level of human PKN1.
Reactivity	Human
Quality Control Testing	Standard curve using PKN1 293T overexpression lysate (non-denatured) as an analyte. Sandwich ELISA detection sensitivity ranging from approximately 243x to 3x dilution of the PKN1 293T overexpression lysate (non-denatured).
Supplied Product	Antibody pair set content: 1. Capture antibody: mouse monoclonal anti-PKN1 (100 ug) 2. Detection antibody: rabbit purified polyclonal anti-PKN1 (50 ug) *Reagents are sufficient for at least 3-5 x 96 well plates using recommended protocols.
Storage Instruction	Store reagents of the antibody pair set at -20°C or lower. Please aliquot to avoid repeated freeze thaw cycle. Reagents should be returned to -20°C storage immediately after use.

Applications

- ELISA Pair (Transfected lysate)

[Protocol Download](#)

Gene Info — PKN1

Entrez GeneID	5585
Gene Name	PKN1
Gene Alias	DBK, MGC46204, PAK1, PKN, PKN-ALPHA, PRK1, PRKCL1
Gene Description	protein kinase N1
Omim ID	601032
Gene Ontology	Hyperlink
Gene Summary	<p>The protein encoded by this gene belongs to the protein kinase C superfamily. This kinase is activated by Rho family of small G proteins and may mediate the Rho-dependent signaling pathway. This kinase can be activated by phospholipids and by limited proteolysis. The 3-phosphoinositide dependent protein kinase-1 (PDPK1/PDK1) is reported to phosphorylate this kinase, which may mediate insulin signals to the actin cytoskeleton. The proteolytic activation of this kinase by caspase-3 or related proteases during apoptosis suggests its role in signal transduction related to apoptosis. Alternatively spliced transcript variants encoding distinct isoforms have been observed. [provided by RefSeq]</p>
Other Designations	protein kinase C-like 1 protein kinase C-like PKN protein kinase C-related kinase 1 serine-threonine kinase N serine/threonine protein kinase N

Disease

- [Cardiovascular Diseases](#)
- [Diabetes Mellitus](#)
- [Edema](#)