

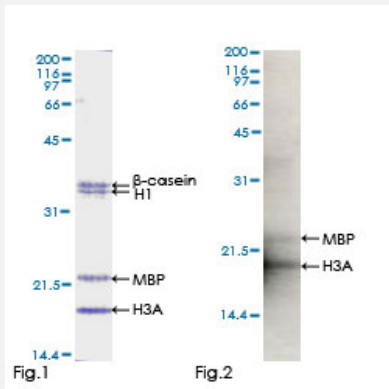
Full-Length

PRKCI (Human) Recombinant Protein (P01)

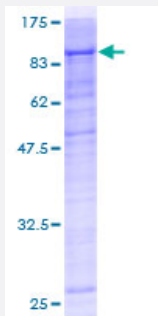
Catalog # H00005584-P01

Size 25 ug, 10 ug

Applications



Kinase Assay



Specification

Product Description

Human PRKCI full-length ORF (AAH22016, 1 a.a. - 587 a.a.) recombinant protein with GST-tag at N-terminal.

Sequence	MSHTVAGGGSGDHS HQVRVKAYYRGDIMITHFEPSSIFEGLCNEVRDMCSFDNEQLFTMKWIDEE GDPCTVSSQLELEEAFLYELNKDSELLIHVFPCVPERPGMPCPGEDKSIYRRGARRWRKLYCA NGHTFQAKRFNRRACHCAICTDRWGLGRQGYKCINCKLLVHKKCHKLVITIECGRHSLPQEPVMPM DQSSMHSDHAQTVIPYNPSSHESLDQVGEEKEAMNTRESGKASSSLGLQDFDLLRVIGRGSYAK VLLVRLKKTDRIYAMKVVKELVNDDDEDIDWVQTEKHVFEQASNHPFLVGLHSCFQTESRLFFVIE YVNGGDLMFHMQRQRKLPEEHARFYSAEISLALNYLHERGIYRDLKLDNVLLDSEGHKLT DYGMC KEGLRPGDTTSTFCGTPNYAPEILRGEDYGFSDWWALGVLMFEMMAGRSPFDVGGSSDNPQD NTEDYLFQVILEKQIRIPRSM SVKAASVLKSFLNKDPKERLGCLPQTGFADIQGHPPFRNVDWDM MEQKQVVPF KPNISGEFGLDNFDSQFTNERVQLTPDDDDIVRKIDQSEFEGFEYNPLLSAEE CV
Host	Wheat Germ (in vitro)
Theoretical MW (kDa)	90.31
Preparation Method	in vitro wheat germ expression system
Purification	Glutathione Sepharose 4 Fast Flow
Quality Control Testing	12.5% SDS-PAGE Stained with Coomassie Blue.
Storage Buffer	50 mM Tris-HCl, 10 mM reduced Glutathione, pH=8.0 in the elution buffer.
Storage Instruction	Store at -80°C. Aliquot to avoid repeated freezing and thawing.
Note	Best use within three months from the date of receipt of this protein.

Applications

- Kinase Assay

[Protocol Download](#)

- Enzyme-linked Immunoabsorbent Assay
- Western Blot (Recombinant protein)
- Antibody Production
- Protein Array

Gene Info — PRKCI

Entrez GeneID

[5584](#)

GeneBank Accession#	BC022016
Protein Accession#	AAH22016
Gene Name	PRKCI
Gene Alias	DXS1179E, MGC26534, PKCI, nPKC-iota
Gene Description	protein kinase C, iota
Omim ID	600539
Gene Ontology	Hyperlink
Gene Summary	<p>This gene encodes a member of the protein kinase C (PKC) family of serine/threonine protein kinases. The PKC family comprises at least eight members, which are differentially expressed and are involved in a wide variety of cellular processes. This protein kinase is calcium-independent and phospholipid-dependent. It is not activated by phorbol esters or diacylglycerol. This kinase can be recruited to vesicle tubular clusters (VTCs) by direct interaction with the small GTPase RAB2, where this kinase phosphorylates glyceraldehyde-3-phosphate dehydrogenase (GAPD/GAPDH) and plays a role in microtubule dynamics in the early secretory pathway. This kinase is found to be necessary for BCL-ABL-mediated resistance to drug-induced apoptosis and therefore protects leukemia cells against drug-induced apoptosis. There is a single exon pseudogene mapped on chromosome X. [provided by RefSeq]</p>
Other Designations	OTTHUMP00000196630 PRKC-lambda/iota aPKC-lambda/iota atypical protein kinase C-lambda/iota protein kinase C iota type

Pathway

- [Endocytosis](#)
- [Insulin signaling pathway](#)
- [Tight junction](#)