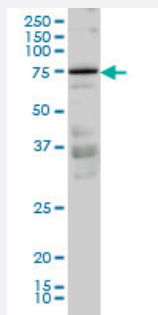


PRKCI monoclonal antibody (M02), clone 3A7

Catalog # H00005584-M02

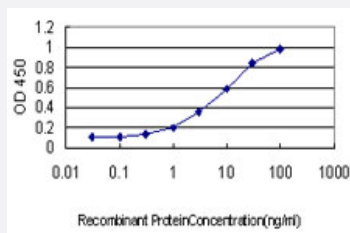
Size 100 ug

Applications



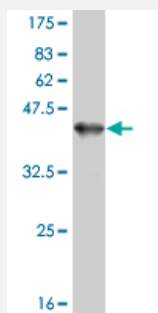
Western Blot (Cell lysate)

PRKCI monoclonal antibody (M02), clone 3A7 Western Blot analysis of PRKCI expression in HeLa S3 NE (Cat # L013V3).



Sandwich ELISA (Recombinant protein)

Detection limit for recombinant GST tagged PRKCI is approximately 0.1 ng/ml as a capture antibody.



Western Blot detection against Immunogen (36.74 kDa).

Specification

Product Description

Mouse monoclonal antibody raised against a partial recombinant PRKCI.

Immunogen	PRKCI (AAH22016, 1 a.a. ~ 100 a.a) partial recombinant protein with GST tag. MW of the GST tag alone is 26 KDa.
Sequence	MSHTVAGGGSGDHS HQVRVKAYYRGDIMITHFEPSISFEGLCNEVRDMCSFDNEQLFTMKWIDEE GDPCTVSSQLELEEAFLRYELNKDSELLIHVFPCV
Host	Mouse
Reactivity	Human
Isotype	IgG1 Kappa
Quality Control Testing	Antibody Reactive Against Recombinant Protein. Western Blot detection against Immunogen (36.74 KDa) .
Storage Buffer	In 1x PBS, pH 7.4
Storage Instruction	Store at -20°C or lower. Aliquot to avoid repeated freezing and thawing.

Applications

- Western Blot (Cell lysate)

PRKCI monoclonal antibody (M02), clone 3A7 Western Blot analysis of PRKCI expression in Hela S3 NE (Cat # L013V3).

[Protocol Download](#)

- Western Blot (Recombinant protein)

[Protocol Download](#)

- Sandwich ELISA (Recombinant protein)

Detection limit for recombinant GST tagged PRKCI is approximately 0.1ng/ml as a capture antibody.

[Protocol Download](#)

- ELISA

Gene Info — PRKCI

Entrez GeneID	5584
GeneBank Accession#	BC022016
Protein Accession#	AAH22016

Gene Name	PRKCI
Gene Alias	DXS1179E, MGC26534, PKCI, nPKC-iota
Gene Description	protein kinase C, iota
Omim ID	600539
Gene Ontology	Hyperlink
Gene Summary	<p>This gene encodes a member of the protein kinase C (PKC) family of serine/threonine protein kinases. The PKC family comprises at least eight members, which are differentially expressed and are involved in a wide variety of cellular processes. This protein kinase is calcium-independent and phospholipid-dependent. It is not activated by phorbol esters or diacylglycerol. This kinase can be recruited to vesicle tubular clusters (VTCs) by direct interaction with the small GTPase RAB2, where this kinase phosphorylates glyceraldehyde-3-phosphate dehydrogenase (GAPD/GAPDH) and plays a role in microtubule dynamics in the early secretory pathway. This kinase is found to be necessary for BCL-ABL-mediated resistance to drug-induced apoptosis and therefore protects leukemia cells against drug-induced apoptosis. There is a single exon pseudogene mapped on chromosome X. [provided by RefSeq]</p>
Other Designations	OTTHUMP00000196630 PRKC-lambda/iota aPKC-lambda/iota atypical protein kinase C-lambda/iota protein kinase C iota type

Pathway

- [Endocytosis](#)
- [Insulin signaling pathway](#)
- [Tight junction](#)