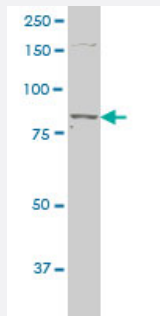


PRKCE polyclonal antibody (A01)

Catalog # H00005581-A01

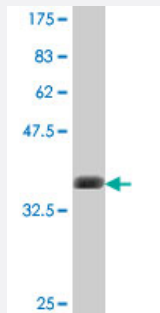
Size 50 uL

Applications



Western Blot (Cell lysate)

PRKCE polyclonal antibody (A01), Lot # 051024JC01 Western Blot analysis of PRKCE expression in NIH/3T3 (Cat # L018V1).



Western Blot detection against Immunogen (37.11 KDa) .

Specification

Product Description	Mouse polyclonal antibody raised against a partial recombinant PRKCE.
Immunogen	PRKCE (NP_005391, 301 a.a. ~ 400 a.a) partial recombinant protein with GST tag.
Sequence	KVLADLGVTDPKITNSGQRRKKLIAGAESPQPASGSSPSEEDRSKSAPTSPCDQEIKELENNIRKALSFDNRGEEHRAASSPDGQLMSPGENGEVRQGQA
Host	Mouse
Reactivity	Human, Mouse
Interspecies Antigen Sequence	Mouse (91)

Quality Control Testing

Antibody Reactive Against Recombinant Protein.
Western Blot detection against Immunogen (37.11 KDa) .

Storage Buffer

50 % glycerol

Storage Instruction

Store at -20°C or lower. Aliquot to avoid repeated freezing and thawing.

Applications

- Western Blot (Cell lysate)

PRKCE polyclonal antibody (A01), Lot # 051024JC01 Western Blot analysis of PRKCE expression in NIH/3T3 (Cat # L018V1).

[Protocol Download](#)

- Western Blot (Recombinant protein)

[Protocol Download](#)

- ELISA

Gene Info — PRKCE

Entrez GeneID

[5581](#)

GeneBank Accession#

[NM_005400](#)

Protein Accession#

[NP_005391](#)

Gene Name

PRKCE

Gene Alias

MGC125656, MGC125657, PKCE, nPKC-epsilon

Gene Description

protein kinase C, epsilon

Omim ID

[176975](#)

Gene Ontology

[Hyperlink](#)

Gene Summary

Protein kinase C (PKC) is a family of serine- and threonine-specific protein kinases that can be activated by calcium and the second messenger diacylglycerol. PKC family members phosphorylate a wide variety of protein targets and are known to be involved in diverse cellular signaling pathways. PKC family members also serve as major receptors for phorbol esters, a class of tumor promoters. Each member of the PKC family has a specific expression profile and is believed to play a distinct role in cells. The protein encoded by this gene is one of the PKC family members. This kinase has been shown to be involved in many different cellular functions, such as neuron channel activation, apoptosis, cardioprotection from ischemia, heat shock response, as well as insulin exocytosis. Knockout studies in mice suggest that this kinase is important for lipopolysaccharide (LPS)-mediated signaling in activated macrophages and may also play a role in controlling anxiety-like behavior. [provided by RefSeq]

Other Designations

-

Pathway

- [Fc epsilon RI signaling pathway](#)
- [Fc gamma R-mediated phagocytosis](#)
- [Tight junction](#)
- [Type II diabetes mellitus](#)
- [Vascular smooth muscle contraction](#)

Disease

- [Disease Models](#)
- [Genetic Predisposition to Disease](#)
- [Narcolepsy](#)
- [Tobacco Use Disorder](#)