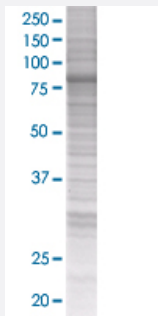


PRKCD 293T Cell Transient Overexpression Lysate(Denatured)

Catalog # H00005580-T01

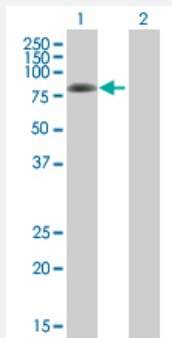
Size 100 uL

Applications



SDS-PAGE Gel

PRKCD transfected lysate.



Western Blot

Lane 1: PRKCD transfected lysate (74.47 KDa)

Lane 2: Non-transfected lysate.

Specification

Transfected Cell Line	293T
Plasmid	pCMV-PRKCD full-length
Host	Human
Theoretical MW (kDa)	74.47
Interspecies Antigen Sequence	Mouse (91); Rat (90)

Quality Control Testing

Transient overexpression cell lysate was tested with Anti-PRKCD antibody ([H00005580-B01](#)) by Western Blots.
SDS-PAGE Gel
PRKCD transfected lysate.
Western Blot
Lane 1: PRKCD transfected lysate (74.47 KDa)
Lane 2: Non-transfected lysate.

Storage Buffer

1X Sample Buffer (50 mM Tris-HCl, 2% SDS, 10% glycerol, 300 mM 2-mercaptoethanol, 0.01% Bromophenol blue)

Storage Instruction

Store at -80°C. Aliquot to avoid repeated freezing and thawing.

Applications

- Western Blot

Gene Info — PRKCD

Entrez GeneID

[5580](#)

GeneBank Accession#

[NM_006254.3](#)

Protein Accession#

-

Gene Name

PRKCD

Gene Alias

MAY1, MGC49908, PKCD, nPKC-delta

Gene Description

protein kinase C, delta

Omim ID

[176977](#)

Gene Ontology

[Hyperlink](#)

Gene Summary

Protein kinase C (PKC) is a family of serine- and threonine-specific protein kinases that can be activated by calcium and the second messenger diacylglycerol. PKC family members phosphorylate a wide variety of protein targets and are known to be involved in diverse cellular signaling pathways. PKC family members also serve as major receptors for phorbol esters, a class of tumor promoters. Each member of the PKC family has a specific expression profile and is believed to play distinct roles in cells. The protein encoded by this gene is one of the PKC family members. Studies both in human and mice demonstrate that this kinase is involved in B cell signaling and in the regulation of growth, apoptosis, and differentiation of a variety of cell types. Alternatively spliced transcript variants encoding the same protein have been observed. [provided by RefSeq]

Other Designations

protein kinase C delta VIII

Pathway

- [Chemokine signaling pathway](#)
- [Fc epsilon RI signaling pathway](#)
- [Fc gamma R-mediated phagocytosis](#)
- [GnRH signaling pathway](#)
- [Neurotrophin signaling pathway](#)
- [Tight junction](#)
- [Type II diabetes mellitus](#)
- [Vascular smooth muscle contraction](#)

Disease

- [Cardiovascular Diseases](#)
- [Diabetes Mellitus](#)
- [Edema](#)
- [Genetic Predisposition to Disease](#)
- [Tobacco Use Disorder](#)