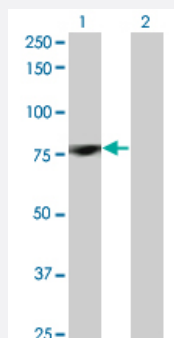


PRKCD monoclonal antibody (M07), clone 8E12

Catalog # H00005580-M07

Size 100 ug

Applications

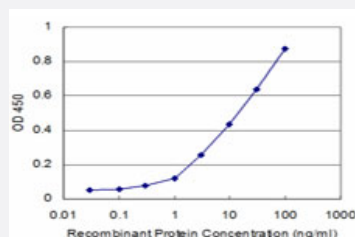


Western Blot (Transfected lysate)

Western Blot analysis of PRKCD expression in transfected 293T cell line by PRKCD monoclonal antibody (M07), clone 8E12.

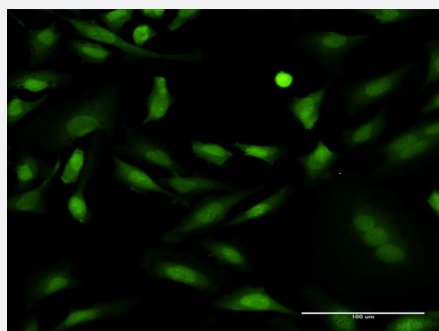
Lane 1: PRKCD transfected lysate (77.5 KDa).

Lane 2: Non-transfected lysate.



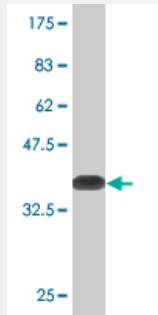
Sandwich ELISA (Recombinant protein)

Detection limit for recombinant GST tagged PRKCD is approximately 1 ng/ml as a capture antibody.



Immunofluorescence

Immunofluorescence of monoclonal antibody to PRKCD on HeLa cell .
[antibody concentration 10 ug/ml]



Western Blot detection against Immunogen (36.74 KDa) .

Specification

Product Description	Mouse monoclonal antibody raised against a partial recombinant PRKCD.
Immunogen	PRKCD (NP_006245, 577 a.a. ~ 676 a.a) partial recombinant protein with GST tag. MW of the GST tag alone is 26 KDa.
Sequence	DILEKLFEREPTKRLGVTGNIKIHPFFKTINWTLLEKRRLEPPFRPKVKSPRDYSNFDQEFLNEKAR LSYSDKNLIDSMDQSAFAGFSFVNPKFEHLLED
Host	Mouse
Reactivity	Human
Interspecies Antigen Sequence	Mouse (82); Rat (81)
Isotype	IgG2a Kappa
Quality Control Testing	Antibody Reactive Against Recombinant Protein. Western Blot detection against Immunogen (36.74 KDa) .
Storage Buffer	In 1x PBS, pH 7.4
Storage Instruction	Store at -20°C or lower. Aliquot to avoid repeated freezing and thawing.

Applications

● Western Blot (Transfected lysate)

Western Blot analysis of PRKCD expression in transfected 293T cell line by PRKCD monoclonal antibody (M07), clone 8E12.

Lane 1: PRKCD transfected lysate(77.5 KDa).

Lane 2: Non-transfected lysate.

[Protocol Download](#)

- Western Blot (Recombinant protein)

[Protocol Download](#)

- Sandwich ELISA (Recombinant protein)

Detection limit for recombinant GST tagged PRKCD is approximately 1ng/ml as a capture antibody.

[Protocol Download](#)

- ELISA

- Immunofluorescence

Immunofluorescence of monoclonal antibody to PRKCD on HeLa cell . [antibody concentration 10 ug/ml]

Gene Info — PRKCD

Entrez GeneID [5580](#)

GeneBank Accession# [NM_006254](#)

Protein Accession# [NP_006245](#)

Gene Name PRKCD

Gene Alias MAY1, MGC49908, PKCD, nPKC-delta

Gene Description protein kinase C, delta

Omim ID [176977](#)

Gene Ontology [Hyperlink](#)

Gene Summary Protein kinase C (PKC) is a family of serine- and threonine-specific protein kinases that can be activated by calcium and the second messenger diacylglycerol. PKC family members phosphorylate a wide variety of protein targets and are known to be involved in diverse cellular signaling pathways. PKC family members also serve as major receptors for phorbol esters, a class of tumor promoters. Each member of the PKC family has a specific expression profile and is believed to play distinct roles in cells. The protein encoded by this gene is one of the PKC family members. Studies both in human and mice demonstrate that this kinase is involved in B cell signaling and in the regulation of growth, apoptosis, and differentiation of a variety of cell types. Alternatively spliced transcript variants encoding the same protein have been observed. [provided by RefSeq]

Other Designations protein kinase C delta VIII

Pathway

- [Chemokine signaling pathway](#)
- [Fc epsilon RI signaling pathway](#)
- [Fc gamma R-mediated phagocytosis](#)
- [GnRH signaling pathway](#)
- [Neurotrophin signaling pathway](#)
- [Tight junction](#)
- [Type II diabetes mellitus](#)
- [Vascular smooth muscle contraction](#)

Disease

- [Cardiovascular Diseases](#)
- [Diabetes Mellitus](#)
- [Edema](#)
- [Genetic Predisposition to Disease](#)
- [Tobacco Use Disorder](#)