

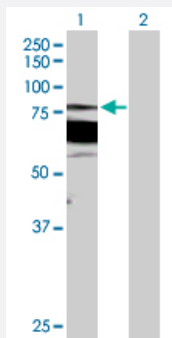
MaxPab®

PRKCB purified MaxPab rabbit polyclonal antibody (D01P)

Catalog # H00005579-D01P

Size 100 ug

Applications

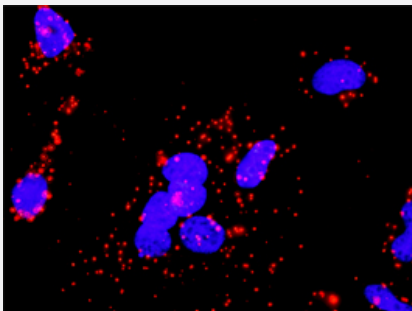


Western Blot (Transfected lysate)

Western Blot analysis of PRKCB expression in transfected 293T cell line ([H00005579-T02](#)) by PRKCB MaxPab polyclonal antibody.

Lane 1: PRKCB1 transfected lysate(76.90 kDa).

Lane 2: Non-transfected lysate.



In situ Proximity Ligation Assay (Cell)

Proximity Ligation Analysis of protein-protein interactions between PRKCB and CHUK. HeLa cells were stained with anti-PRKCB rabbit purified polyclonal 1:1200 and anti-CHUK mouse monoclonal antibody 1:50. Each red dot represents the detection of protein-protein interaction complex, and nuclei were counterstained with DAPI (blue).

Specification

Product Description

Rabbit polyclonal antibody raised against a full-length human PRKCB protein.

Immunogen

PRKCB (NP_997700.1, 1 a.a. ~ 671 a.a) full-length human protein.

Sequence

MADPAAGPPPSEGEESTVRFARKGALRQKNVHEVKNHKFTARFFKQPTFCSHCTDFWGFQKQ
GFQCQVCCFVVHKRCHEFVTFSCPGADKGPASDDPRSKHKFKIHTYSSPTFCDHCGSLLYGLIH
QGMKCDTCMMNVHKRCVMNVPSLCGTDHTERRGRYQAHIDRDVLVLVRDAKNLVPMDPNGLS
DPYVKLKLIPDPKSESKQKTKIKCSLNPEWNETFRFQLKESDKDRRLSVEIWDWDLTSRNDFMG
SLSFGISELQKASVDGWFKLLSQEEGEYFNVPVPPEGSEANEELRQKFERAKISQGTKVPEEKT
NTVSKFDNNGNRDRMKLTDFNFLMVLGKGSFGKVMLSERKGTDELYAVKILKKDVVIQDDDDVEC
TMVEKRVLALPGKPPFLTQLHSCFQTMDRLYFVMEYVNGGDLMYHIQVGRFKEPHAVFYAAEIAI
GLFFLQSKGIYRDLKLDNVMLDSEGHKIADFGMCKENWDGVTTKTCGTPDYAPEIIAYQPYGKS
VDWWAFGVLLYEMLAGQAPFEGEDEDELFSIMEHNVAYPKSMSKEAVAICKGLMTKHPGKRL
GCGPEGERDIKEHAFFRYDWEKLERKEIQPPYKPKARDKRDTSNFDKEFTRQPVELTPTDKLFIM
NLDQNEFAGFSYTNPEFVINV

Host

Rabbit

Reactivity

Human

Quality Control Testing

Antibody reactive against mammalian transfected lysate.

Storage Buffer

In 1x PBS, pH 7.4

Storage Instruction

Store at -20°C or lower. Aliquot to avoid repeated freezing and thawing.

Applications

- Western Blot (Transfected lysate)

Western Blot analysis of PRKCB expression in transfected 293T cell line ([H00005579-T02](#)) by PRKCB MaxPab polyclonal antibody.

Lane 1: PRKCB1 transfected lysate(76.90 KDa).
Lane 2: Non-transfected lysate.

[Protocol Download](#)

- In situ* Proximity Ligation Assay (Cell)

Proximity Ligation Analysis of protein-protein interactions between PRKCB and CHUK. HeLa cells were stained with anti-PRKCB rabbit purified polyclonal 1:1200 and anti-CHUK mouse monoclonal antibody 1:50. Each red dot represents the detection of protein-protein interaction complex, and nuclei were counterstained with DAPI (blue).

Gene Info — PRKCB

Entrez GeneID

[5579](#)

GeneBank Accession#

[NM_212535.1](#)

Protein Accession#

[NP_997700.1](#)

Gene Name	PRKCB
Gene Alias	MGC41878, PKC-beta, PKCB, PRKCB1, PRKCB2
Gene Description	protein kinase C, beta
Omim ID	176970
Gene Ontology	Hyperlink
Gene Summary	<p>Protein kinase C (PKC) is a family of serine- and threonine-specific protein kinases that can be activated by calcium and second messenger diacylglycerol. PKC family members phosphorylate a wide variety of protein targets and are known to be involved in diverse cellular signaling pathways. PKC family members also serve as major receptors for phorbol esters, a class of tumor promoters. Each member of the PKC family has a specific expression profile and is believed to play a distinct role in cells. The protein encoded by this gene is one of the PKC family members. This protein kinase has been reported to be involved in many different cellular functions, such as B cell activation, apoptosis induction, endothelial cell proliferation, and intestinal sugar absorption. Studies in mice also suggest that this kinase may also regulate neuronal functions and correlate fear-induced conflict behavior after stress. Alternatively spliced transcript variants encoding distinct isoforms have been reported. [provided by RefSeq]</p>
Other Designations	protein kinase C, beta 1 polypeptide

Pathway

- [B cell receptor signaling pathway](#)
- [Calcium signaling pathway](#)
- [Chemokine signaling pathway](#)
- [ErbB signaling pathway](#)
- [Fc epsilon RI signaling pathway](#)
- [Fc gamma R-mediated phagocytosis](#)
- [Focal adhesion](#)
- [Gap junction](#)
- [Glioma](#)
- [GnRH signaling pathway](#)
- [Leukocyte transendothelial migration](#)
- [Long-term depression](#)

- [Long-term potentiation](#)
- [MAPK signaling pathway](#)
- [Melanogenesis](#)
- [Natural killer cell mediated cytotoxicity](#)
- [Non-small cell lung cancer](#)
- [Pathways in cancer](#)
- [Phosphatidylinositol signaling system](#)
- [Tight junction](#)
- [Vascular smooth muscle contraction](#)
- [VEGF signaling pathway](#)
- [Vibrio cholerae infection](#)
- [Wnt signaling pathway](#)

Disease

- [Albuminuria](#)
- [Autistic Disorder](#)
- [Cardiovascular Diseases](#)
- [Diabetes Mellitus](#)
- [Diabetic Angiopathies](#)
- [Diabetic Nephropathies](#)
- [Diabetic Retinopathy](#)
- [Disease Progression](#)
- [Edema](#)
- [Epilepsies](#)
- [Genetic Predisposition to Disease](#)
- [Kidney Failure](#)

- [Liver Cirrhosis](#)
- [Proteinuria](#)
- [Syndrome](#)
- [Tobacco Use Disorder](#)