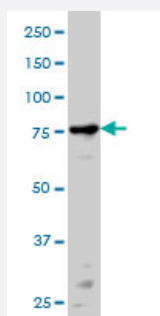


PRKCA monoclonal antibody (M01), clone 2F11

Catalog # H00005578-M01

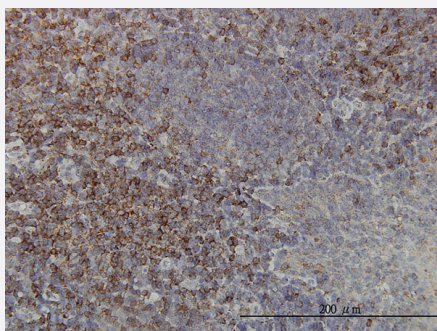
Size 100 ug

Applications



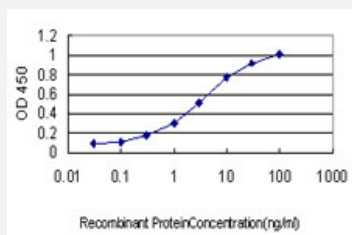
Western Blot (Cell lysate)

PRKCA monoclonal antibody (M01), clone 2F11 Western Blot analysis of PRKCA expression in HeLa (Cat # L013V1).



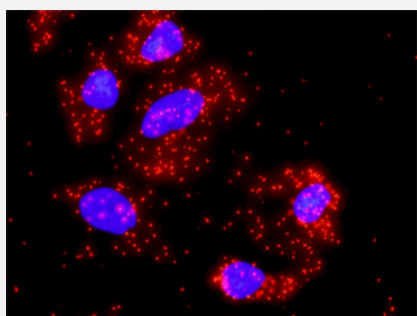
Immunohistochemistry (Formalin/PFA-fixed paraffin-embedded sections)

Immunoperoxidase of monoclonal antibody to PRKCA on formalin-fixed paraffin-embedded human tonsil. [antibody concentration 1 ug/ml]



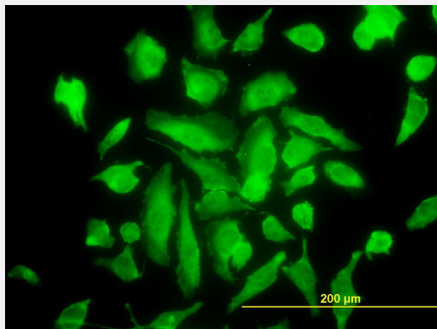
Sandwich ELISA (Recombinant protein)

Detection limit for recombinant GST tagged PRKCA is approximately 0.1ng/ml as a capture antibody.



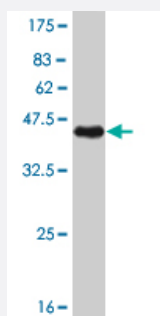
In situ Proximity Ligation Assay (Cell)

Proximity Ligation Analysis of protein-protein interactions between FAS and PRKCA. HeLa cells were stained with anti-FAS rabbit purified polyclonal 1:1200 and anti-PRKCA mouse monoclonal antibody 1:50. Each red dot represents the detection of protein-protein interaction complex, and nuclei were counterstained with DAPI (blue).



Immunofluorescence

Immunofluorescence of monoclonal antibody to PRKCA on HeLa cell. [antibody concentration 10 ug/ml]



Western Blot detection against Immunogen (37.84 KDa) .

Specification

Product Description	Mouse monoclonal antibody raised against a partial recombinant PRKCA.
Immunogen	PRKCA (NP_002728, 563 a.a. ~ 672 a.a) partial recombinant protein with GST tag. MW of the GST tag alone is 26 KDa.
Sequence	KEAVSICKGLMTKHPAKRLGCGPEGERDVREHAFFRRIDWEKLENREIQPPFKPKVCGKGAENF DKFFTRGQPVLTPDQLVIANIDQSDFEFVSYPNPQFVHPILQSAV
Host	Mouse
Reactivity	Human
Interspecies Antigen Sequence	Mouse (100); Rat (100)
Isotype	IgG1 Kappa
Quality Control Testing	Antibody Reactive Against Recombinant Protein. Western Blot detection against Immunogen (37.84 KDa) .
Storage Buffer	In 1x PBS, pH 7.4
Storage Instruction	Store at -20°C or lower. Aliquot to avoid repeated freezing and thawing.

Applications

- Western Blot (Cell lysate)

PRKCA monoclonal antibody (M01), clone 2F11 Western Blot analysis of PRKCA expression in HeLa (Cat # L013V1).

[Protocol Download](#)

- Western Blot (Recombinant protein)

[Protocol Download](#)

- Immunohistochemistry (Formalin/PFA-fixed paraffin-embedded sections)

Immunoperoxidase of monoclonal antibody to PRKCA on formalin-fixed paraffin-embedded human tonsil. [antibody concentration 1 ug/ml]

[Protocol Download](#)

- Sandwich ELISA (Recombinant protein)

Detection limit for recombinant GST tagged PRKCA is approximately 0.1ng/ml as a capture antibody.

[Protocol Download](#)

- ELISA

- In situ* Proximity Ligation Assay (Cell)

Proximity Ligation Analysis of protein-protein interactions between FAS and PRKCA. HeLa cells were stained with anti-FAS rabbit purified polyclonal 1:1200 and anti-PRKCA mouse monoclonal antibody 1:50. Each red dot represents the detection of protein-protein interaction complex, and nuclei were counterstained with DAPI (blue).

- Immunofluorescence

Immunofluorescence of monoclonal antibody to PRKCA on HeLa cell. [antibody concentration 10 ug/ml]

Gene Info — PRKCA

Entrez GeneID [5578](#)

GeneBank Accession# [NM_002737](#)

Protein Accession# [NP_002728](#)

Gene Name PRKCA

Gene Alias	AAG6, MGC129900, MGC129901, PKC-alpha, PKCA, PRKACA
Gene Description	protein kinase C, alpha
Omim ID	176960
Gene Ontology	Hyperlink
Gene Summary	Protein kinase C (PKC) is a family of serine- and threonine-specific protein kinases that can be activated by calcium and the second messenger diacylglycerol. PKC family members phosphorylate a wide variety of protein targets and are known to be involved in diverse cellular signaling pathways. PKC family members also serve as major receptors for phorbol esters, a class of tumor promoters. Each member of the PKC family has a specific expression profile and is believed to play a distinct role in cells. The protein encoded by this gene is one of the PKC family members. This kinase has been reported to play roles in many different cellular processes, such as cell adhesion, cell transformation, cell cycle checkpoint, and cell volume control. Knockout studies in mice suggest that this kinase may be a fundamental regulator of cardiac contractility and Ca(2+) handling in myocytes. [provided by RefSeq]
Other Designations	aging-associated gene 6 protein kinase C alpha type

Pathway

- [Calcium signaling pathway](#)
- [ErbB signaling pathway](#)
- [Fc epsilon RI signaling pathway](#)
- [Fc gamma R-mediated phagocytosis](#)
- [Focal adhesion](#)
- [Gap junction](#)
- [Glioma](#)
- [GnRH signaling pathway](#)
- [Leukocyte transendothelial migration](#)
- [Long-term depression](#)
- [Long-term potentiation](#)
- [MAPK signaling pathway](#)
- [Melanogenesis](#)

- [Natural killer cell mediated cytotoxicity](#)
- [Non-small cell lung cancer](#)
- [Pathogenic Escherichia coli infection - EHEC](#)
- [Pathways in cancer](#)
- [Phosphatidylinositol signaling system](#)
- [Tight junction](#)
- [Vascular smooth muscle contraction](#)
- [VEGF signaling pathway](#)
- [Vibrio cholerae infection](#)
- [Wnt signaling pathway](#)

Disease

- [Adenocarcinoma](#)
- [Asthma](#)
- [Breast cancer](#)
- [Breast Neoplasms](#)
- [Esophageal Neoplasms](#)
- [Genetic Predisposition to Disease](#)
- [Liver Cirrhosis](#)
- [Mental Disorders](#)
- [Multiple Sclerosis](#)
- [Obesity](#)
- [Pancreatic Neoplasms](#)
- [Premature Birth](#)
- [Schizophrenia](#)

- [Tobacco Use Disorder](#)
- [Vaginosis](#)