

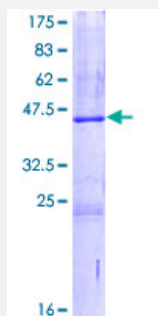
Full-Length

SRGN (Human) Recombinant Protein (P02)

Catalog # H00005552-P02

Size 2 ug

Applications



Specification

Product Description	Human SRGN full-length ORF (NP_002718.2, 1 a.a. - 158 a.a.) recombinant protein with GST-tag at N-terminal.
Sequence	MMQKLLKCSRLVLALALILVLESSVQGYPTRRARYQWVRCNPDSNSANCLEEKGPMFELLPGES NKIPRLRTDLFPKTRIQDLNRIFPLSESYSGSGFGSGSGSGSGSGSGFLTEMEQDYQLVDESDAF HDNLRSLDRNLPSDSQDLGQHGLEEDFML
Host	Wheat Germ (in vitro)
Theoretical MW (kDa)	44.1
Preparation Method	in vitro wheat germ expression system
Purification	Glutathione Sepharose 4 Fast Flow
Quality Control Testing	12.5% SDS-PAGE Stained with Coomassie Blue.
Storage Buffer	50 mM Tris-HCl, 10 mM reduced Glutathione, pH=8.0 in the elution buffer.
Storage Instruction	Store at -80°C. Aliquot to avoid repeated freezing and thawing.
Note	Best use within three months from the date of receipt of this protein.

Applications

- Enzyme-linked Immunoabsorbent Assay
- Western Blot (Recombinant protein)
- Antibody Production
- Protein Array

Gene Info — SRGN

Entrez GeneID [5552](#)

GeneBank Accession# [NM_002727.2](#)

Protein Accession# [NP_002718.2](#)

Gene Name SRGN

Gene Alias FLJ12930, MGC9289, PPG, PRG, PRG1

Gene Description serglycin

Omim ID [177040](#)

Gene Ontology [Hyperlink](#)

Gene Summary This gene encodes a protein best known as a hematopoietic cell granule proteoglycan. Proteoglycans stored in the secretory granules of many hematopoietic cells also contain a protease-resistant peptide core, which may be important for neutralizing hydrolytic enzymes. This encoded protein was found to be associated with the macromolecular complex of granzymes and perforin, which may serve as a mediator of granule-mediated apoptosis. [provided by RefSeq]

Other Designations OTTHUMP00000019716|hematopoietic proteoglycan core peptide|platelet proteoglycan protein core|proteoglycan 1, secretory granule|proteoglycan protein core for mast cell secretory granule|secretory granule proteoglycan 1|secretory granule proteoglycan core p