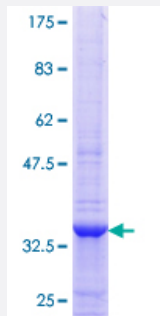


# PRELP (Human) Recombinant Protein (Q01)

Catalog # H00005549-Q01

Size 25 ug, 10 ug

## Applications



## Specification

<b>Product Description</b>	Human PRELP partial ORF ( NP_002716.1, 281 a.a. - 365 a.a.) recombinant protein with GST-tag at N-terminal.
<b>Sequence</b>	RGLPKNSFNISNLLVLHLSHNRISSVPAINNRLEHLYLNNNSIEKINGTQICPNDLVAFHDFSSDLENV PHLRYLRLDGNYLKPP
<b>Host</b>	Wheat Germ (in vitro)
<b>Theoretical MW (kDa)</b>	35.09
<b>Interspecies Antigen Sequence</b>	Mouse (93); Rat (92)
<b>Preparation Method</b>	<a href="#">in vitro wheat germ expression system</a>
<b>Purification</b>	Glutathione Sepharose 4 Fast Flow
<b>Quality Control Testing</b>	12.5% SDS-PAGE Stained with Coomassie Blue.
<b>Storage Buffer</b>	50 mM Tris-HCl, 10 mM reduced Glutathione, pH=8.0 in the elution buffer.
<b>Storage Instruction</b>	Store at -80°C. Aliquot to avoid repeated freezing and thawing.
<b>Note</b>	Best use within three months from the date of receipt of this protein.

## Applications

- Enzyme-linked Immunoabsorbent Assay
- Western Blot (Recombinant protein)
- Antibody Production
- Protein Array

## Gene Info — PRELP

Entrez GeneID [5549](#)

GeneBank Accession# [NM\\_002725](#)

Protein Accession# [NP\\_002716.1](#)

Gene Name PRELP

Gene Alias MGC45323, MST161, MSTP161, SLRR2A

Gene Description proline/arginine-rich end leucine-rich repeat protein

Omim ID [601914](#)

Gene Ontology [Hyperlink](#)

**Gene Summary** The protein encoded by this gene is a leucine-rich repeat protein present in connective tissue extracellular matrix. This protein functions as a molecule anchoring basement membranes to the underlying connective tissue. This protein has been shown to bind type I collagen to basement membranes and type II collagen to cartilage. It also binds the basement membrane heparan sulfate proteoglycan perlecan. This protein is suggested to be involved in the pathogenesis of Hutchinson-Gilford progeria (HGP), which is reported to lack the binding of collagen in basement membranes and cartilage. Alternatively spliced transcript variants encoding the same protein have been observed. [provided by RefSeq]

**Other Designations** 55 kDa leucine-rich repeat protein of articular cartilage|OTTHUMP00000034099|prolargin proteoglycan|proline arginine-rich end leucine-rich repeat protein

## Disease

- [Genetic Predisposition to Disease](#)

- [Hypertension](#)