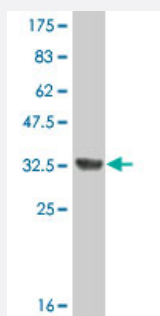


PRELP monoclonal antibody (M01A), clone 3H1

Catalog # H00005549-M01A

Size 200 uL

Applications



Western Blot detection against Immunogen (35.09 KDa) .

Specification

| | |
|--------------------------------------|--|
| Product Description | Mouse monoclonal antibody raised against a partial recombinant PRELP. |
| Immunogen | PRELP (NP_002716.1, 281 a.a. ~ 365 a.a) partial recombinant protein with GST tag. MW of the GST tag alone is 26 KDa. |
| Sequence | RGLPKNSFNISNLLVLHLSHNRISVPAINNRLEHLYLNNNSIEKINGTQICPNDLVAFHDFSSDLENV PHLRYLRDGNLYLKPP |
| Host | Mouse |
| Reactivity | Human |
| Interspecies Antigen Sequence | Mouse (93); Rat (92) |
| Isotype | IgM Kappa |
| Quality Control Testing | Antibody Reactive Against Recombinant Protein. Western Blot detection against Immunogen (35.09 KDa) . |
| Storage Buffer | In ascites fluid |
| Storage Instruction | Store at -20°C or lower. Aliquot to avoid repeated freezing and thawing. |

Applications

- Western Blot (Recombinant protein)

[Protocol Download](#)

- ELISA

Gene Info — PRELP

Entrez GeneID [5549](#)

GeneBank Accession# [NM_002725](#)

Protein Accession# [NP_002716.1](#)

Gene Name PRELP

Gene Alias MGC45323, MST161, MSTP161, SLRR2A

Gene Description proline/arginine-rich end leucine-rich repeat protein

Omim ID [601914](#)

Gene Ontology [Hyperlink](#)

Gene Summary

The protein encoded by this gene is a leucine-rich repeat protein present in connective tissue extracellular matrix. This protein functions as a molecule anchoring basement membranes to the underlying connective tissue. This protein has been shown to bind type I collagen to basement membranes and type II collagen to cartilage. It also binds the basement membrane heparan sulfate proteoglycan perlecan. This protein is suggested to be involved in the pathogenesis of Hutchinson-Gilford progeria (HGP), which is reported to lack the binding of collagen in basement membranes and cartilage. Alternatively spliced transcript variants encoding the same protein have been observed. [provided by RefSeq]

Other Designations

55 kDa leucine-rich repeat protein of articular cartilage|OTTHUMP00000034099|prolargin proteoglycan|proline arginine-rich end leucine-rich repeat protein

Disease

- [Genetic Predisposition to Disease](#)
- [Hypertension](#)