

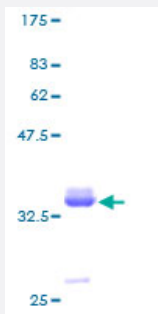
Full-Length

PPY (Human) Recombinant Protein (P01)

Catalog # H00005539-P01

Size 25 ug, 10 ug

Applications



Specification

Product Description	Human PPY full-length ORF (AAH32225, 1 a.a. - 95 a.a.) recombinant protein with GST-tag at N-terminal.
Sequence	MAAARLCLSLLLLSTCVALLLQPLLGAQGAPLEPVYPGDNATPEQMAQYAADLRRYINMLTRPRY GKRHKEDTLAFSEWGSPPHAAVPRELSPLDL
Host	Wheat Germ (in vitro)
Theoretical MW (kDa)	36.19
Interspecies Antigen Sequence	Mouse (74); Rat (77)
Preparation Method	in vitro wheat germ expression system
Purification	Glutathione Sepharose 4 Fast Flow
Quality Control Testing	12.5% SDS-PAGE Stained with Coomassie Blue.
Storage Buffer	50 mM Tris-HCl, 10 mM reduced Glutathione, pH=8.0 in the elution buffer.
Storage Instruction	Store at -80°C. Aliquot to avoid repeated freezing and thawing.
Note	Best use within three months from the date of receipt of this protein.

Applications

- Enzyme-linked Immunoabsorbent Assay
- Western Blot (Recombinant protein)
- Antibody Production
- Protein Array

Gene Info — PPY

Entrez GeneID	5539
GeneBank Accession#	BC032225
Protein Accession#	AAH32225
Gene Name	PPY
Gene Alias	PNP
Gene Description	pancreatic polypeptide
Omim ID	167780
Gene Ontology	Hyperlink
Gene Summary	This gene belongs to the NPY family and it encodes a protein that is synthesized as a 95 aa polypeptide precursor in the pancreatic islets of Langerhans. It is cleaved into two peptide products; the active hormone of 36 aa and an icosapeptide of unknown function. The hormone acts as a regulator of pancreatic and gastrointestinal functions and may be important in the regulation of food intake. Plasma level of this hormone has been shown to be reduced in conditions associated with increased food intake and elevated in anorexia nervosa. In addition, infusion of this hormone in obese rodents has shown to decrease weight gain. [provided by RefSeq]
Other Designations	pancreatic polypeptide Y

Pathway

- [Neuroactive ligand-receptor interaction](#)

Disease

- [Diabetes Mellitus](#)
- [Obesity](#)