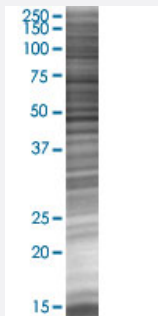


PPP6C 293T Cell Transient Overexpression Lysate(Denatured)

Catalog # H00005537-T01

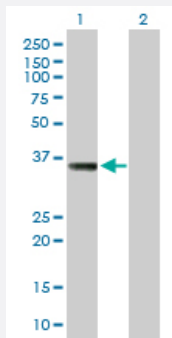
Size 100 uL

Applications



SDS-PAGE Gel

PPP6C transfected lysate.



Western Blot

Lane 1: PPP6C transfected lysate (33.66 KDa)

Lane 2: Non-transfected lysate.

Specification

Transfected Cell Line	293T
Plasmid	pCMV-PPP6C full-length
Host	Human
Theoretical MW (kDa)	33.66
Interspecies Antigen Sequence	Mouse (99); Rat (99)

Quality Control Testing

Transient overexpression cell lysate was tested with Anti-PPP6C antibody ([H00005537-B01](#)) by Western Blots.
SDS-PAGE Gel
PPP6C transfected lysate.
Western Blot
Lane 1: PPP6C transfected lysate (33.66 KDa)
Lane 2: Non-transfected lysate.

Storage Buffer

1X Sample Buffer (50 mM Tris-HCl, 2% SDS, 10% glycerol, 300 mM 2-mercaptoethanol, 0.01% Bromophenol blue)

Storage Instruction

Store at -80°C. Aliquot to avoid repeated freezing and thawing.

Applications

- Western Blot

Gene Info — PPP6C

Entrez GeneID

[5537](#)

GeneBank Accession#

[BC006990](#)

Protein Accession#

[AAH06990](#)

Gene Name

PPP6C

Gene Alias

FLJ92648, MGC12249

Gene Description

protein phosphatase 6, catalytic subunit

Omim ID

[300141](#)

Gene Ontology

[Hyperlink](#)

Gene Summary

This gene encodes the catalytic subunit of protein phosphatase, a component of a signaling pathway regulating cell cycle progression. Splice variants encoding different protein isoforms exist. The pseudogene of this gene is located on chromosome X. [provided by RefSeq]

Other Designations

OTTHUMP00000022122|serine/threonine protein phosphatase catalytic subunit

Disease

- [Celiac Disease](#)

- [Genetic Predisposition to Disease](#)