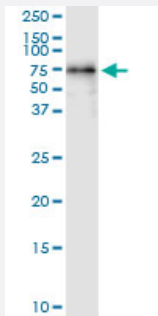


PPP5C (Human) IP-WB Antibody Pair

Catalog # H00005536-PW1

Size 1 Set

Applications



Immunoprecipitation of PPP5C transfected lysate using rabbit polyclonal anti-PPP5C and Protein A Magnetic Bead ([U0007](#)), and immunoblotted with mouse purified polyclonal anti-PPP5C.

Specification

Product Description	This IP-WB antibody pair set comes with one antibody for immunoprecipitation and another to detect the precipitated protein in western blot.
Reactivity	Human
Quality Control Testing	Immunoprecipitation-Western Blot (IP-WB) Immunoprecipitation of PPP5C transfected lysate using rabbit polyclonal anti-PPP5C and Protein A Magnetic Bead (U0007), and immunoblotted with mouse purified polyclonal anti-PPP5C.
Supplied Product	Antibody pair set content: 1. Antibody pair for IP: rabbit polyclonal anti-PPP5C (300 ul) 2. Antibody pair for WB: mouse purified polyclonal anti-PPP5C (50 ug)
Storage Instruction	Store reagents of the antibody pair set at -20°C or lower. Please aliquot to avoid repeated freeze thaw cycle. Reagents should be returned to -20°C storage immediately after use.

Applications

- Immunoprecipitation-Western Blot

[Protocol Download](#)

Gene Info — PPP5C

Entrez GeneID	5536
Gene Name	PPP5C
Gene Alias	FLJ36922, PP5, PPP5
Gene Description	protein phosphatase 5, catalytic subunit
Omim ID	600658
Gene Ontology	Hyperlink
Gene Summary	O
Other Designations	Serine/Threonine phosphatase

Pathway

- [MAPK signaling pathway](#)