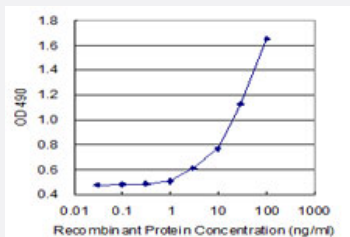


PPP5C (Human) Matched Antibody Pair

Catalog # H00005536-AP22

Size 1 Set

Applications



Sandwich ELISA detection sensitivity ranging from 1 ng/ml to 100 ng/ml.

Specification

| | |
|--------------------------------|--|
| Product Description | This antibody pair set comes with a matched antibody pair to detect and quantify the protein level of human PPP5C. |
| Reactivity | Human |
| Quality Control Testing | Standard curve using recombinant protein (H00005536-P01) as an analyte. Sandwich ELISA detection sensitivity ranging from 1 ng/ml to 100 ng/ml. |
| Supplied Product | Antibody pair set content: 1. Capture antibody: rabbit MaxPab® affinity purified polyclonal anti-PPP5C (100 ug) 2. Detection antibody: mouse purified polyclonal anti-PPP5C (20 ug) *Reagents are sufficient for at least 1-2 x 96 well plates using recommended protocols. |
| Storage Instruction | Store reagents of the antibody pair set at -20°C or lower. Please aliquot to avoid repeated freeze thaw cycle. Reagents should be returned to -20°C storage immediately after use. |

Applications

- ELISA Pair (Recombinant protein)

[Protocol Download](#)

Gene Info — PPP5C

| | |
|--------------------|--|
| Entrez GeneID | 5536 |
| Gene Name | PPP5C |
| Gene Alias | FLJ36922, PP5, PPP5 |
| Gene Description | protein phosphatase 5, catalytic subunit |
| Omim ID | 600658 |
| Gene Ontology | Hyperlink |
| Gene Summary | O |
| Other Designations | Serine/Threonine phosphatase |

Pathway

- [MAPK signaling pathway](#)