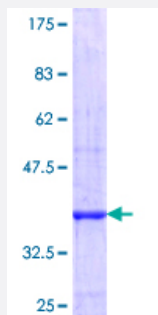


PPP2R5C (Human) Recombinant Protein (Q01)

Catalog # H00005527-Q01

Size 25 ug, 10 ug

Applications



Specification

Product Description	Human PPP2R5C partial ORF (NP_002710.2, 1 a.a. - 100 a.a.) recombinant protein with GST-tag at N-terminal.
Sequence	MLTCNKAGSRMVVDAANSNGPFQPVVLLHIRDVPPADQEKLFIQKLRQCCVLDFVSDPLSDLK WKEVKRAALSEMVEYITHNRRNVITEPIYPEVVMFA
Host	Wheat Germ (in vitro)
Theoretical MW (kDa)	36.74
Preparation Method	in vitro wheat germ expression system
Purification	Glutathione Sepharose 4 Fast Flow
Quality Control Testing	12.5% SDS-PAGE Stained with Coomassie Blue.
Storage Buffer	50 mM Tris-HCl, 10 mM reduced Glutathione, pH=8.0 in the elution buffer.
Storage Instruction	Store at -80°C. Aliquot to avoid repeated freezing and thawing.
Note	Best use within three months from the date of receipt of this protein.

Applications

- Enzyme-linked Immunoabsorbent Assay
- Western Blot (Recombinant protein)
- Antibody Production
- Protein Array

Gene Info — PPP2R5C

Entrez GeneID [5527](#)

GeneBank Accession# [NM_002719](#)

Protein Accession# [NP_002710.2](#)

Gene Name PPP2R5C

Gene Alias B56G, MGC23064, PR61G

Gene Description protein phosphatase 2, regulatory subunit B', gamma isoform

Omim ID [601645](#)

Gene Ontology [Hyperlink](#)

Gene Summary The product of this gene belongs to the phosphatase 2A regulatory subunit B family. Protein phosphatase 2A is one of the four major Ser/Thr phosphatases, and it is implicated in the negative control of cell growth and division. It consists of a common heteromeric core enzyme, which is composed of a catalytic subunit and a constant regulatory subunit, that associates with a variety of regulatory subunits. The B regulatory subunit might modulate substrate selectivity and catalytic activity. This gene encodes a gamma isoform of the regulatory subunit B56 subfamily. Alternatively spliced transcript variants encoding different isoforms have been identified. [provided by RefSeq]

Other Designations B' alpha regulatory subunit|PP2A, B subunit, B' gamma isoform|PP2A, B subunit, B56 gamma isoform|PP2A, B subunit, PR61 gamma isoform|PP2A, B subunit, R5 gamma isoform|Serine/threonine protein phosphatase 2A, 56 kDa regulatory subunit, gamma isoform|gamma

Pathway

- [Wnt signaling pathway](#)

Disease

- [Kidney Failure](#)
- [Tobacco Use Disorder](#)