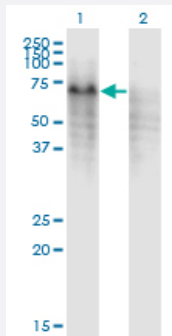


PPP2R5C monoclonal antibody (M01), clone 3G9

Catalog # H00005527-M01

Size 100 ug

Applications

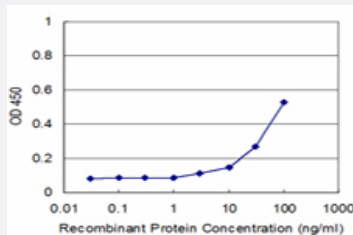


Western Blot (Transfected lysate)

Western Blot analysis of PPP2R5C expression in transfected 293T cell line by PPP2R5C monoclonal antibody (M01), clone 3G9.

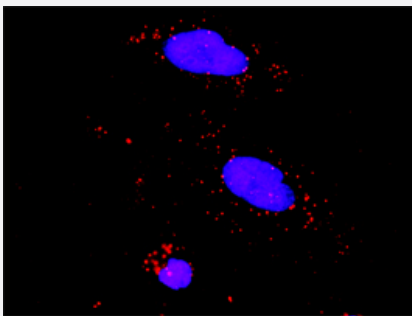
Lane 1: PPP2R5C transfected lysate(61.1 KDa).

Lane 2: Non-transfected lysate.



Sandwich ELISA (Recombinant protein)

Detection limit for recombinant GST tagged PPP2R5C is approximately 3ng/ml as a capture antibody.



In situ Proximity Ligation Assay (Cell)

Proximity Ligation Analysis of protein-protein interactions between TP53 and PPP2R5C. HeLa cells were stained with anti-TP53 rabbit purified polyclonal 1:1200 and anti-PPP2R5C mouse monoclonal antibody 1:50. Each red dot represents the detection of protein-protein interaction complex, and nuclei were counterstained with DAPI (blue).

Specification

Product Description

Mouse monoclonal antibody raised against a partial recombinant PPP2R5C.

Immunogen	PPP2R5C (NP_002710.2, 1 a.a. ~ 100 a.a) partial recombinant protein with GST tag. MW of the GST tag alone is 26 KDa.
Sequence	MLTCNKAGSRMVVDAANSNGPFQPVVLLHIRDVPPADQEKLFIQKLRQCCVLDFVSDPLSDLK WKEVKRAALSEMVEYITHNRNVITEPIYPEVVMFA
Host	Mouse
Reactivity	Human
Isotype	IgG2a Kappa
Quality Control Testing	Antibody Reactive Against Recombinant Protein.
Storage Buffer	In 1x PBS, pH 7.4
Storage Instruction	Store at -20°C or lower. Aliquot to avoid repeated freezing and thawing.

Applications

- Western Blot (Transfected lysate)

Western Blot analysis of PPP2R5C expression in transfected 293T cell line by PPP2R5C monoclonal antibody (M01), clone 3G9.

Lane 1: PPP2R5C transfected lysate(61.1 KDa).

Lane 2: Non-transfected lysate.

[Protocol Download](#)

- Sandwich ELISA (Recombinant protein)

Detection limit for recombinant GST tagged PPP2R5C is approximately 3ng/ml as a capture antibody.

[Protocol Download](#)

- ELISA

- In situ* Proximity Ligation Assay (Cell)

Proximity Ligation Analysis of protein-protein interactions between TP53 and PPP2R5C. HeLa cells were stained with anti-TP53 rabbit purified polyclonal 1:1200 and anti-PPP2R5C mouse monoclonal antibody 1:50. Each red dot represents the detection of protein-protein interaction complex, and nuclei were counterstained with DAPI (blue).

Gene Info — PPP2R5C

Entrez GeneID

[5527](#)

GeneBank Accession#	NM_002719
Protein Accession#	NP_002710.2
Gene Name	PPP2R5C
Gene Alias	B56G, MGC23064, PR61G
Gene Description	protein phosphatase 2, regulatory subunit B', gamma isoform
Omim ID	601645
Gene Ontology	Hyperlink
Gene Summary	The product of this gene belongs to the phosphatase 2A regulatory subunit B family. Protein phosphatase 2A is one of the four major Ser/Thr phosphatases, and it is implicated in the negative control of cell growth and division. It consists of a common heteromeric core enzyme, which is composed of a catalytic subunit and a constant regulatory subunit, that associates with a variety of regulatory subunits. The B regulatory subunit might modulate substrate selectivity and catalytic activity. This gene encodes a gamma isoform of the regulatory subunit B56 subfamily. Alternatively spliced transcript variants encoding different isoforms have been identified. [provided by RefSeq]
Other Designations	B' alpha regulatory subunit PP2A, B subunit, B' gamma isoform PP2A, B subunit, B56 gamma isoform PP2A, B subunit, PR61 gamma isoform PP2A, B subunit, R5 gamma isoform Serine/threonine protein phosphatase 2A, 56 kDa regulatory subunit, gamma isoform gamma

Pathway

- [Wnt signaling pathway](#)

Disease

- [Kidney Failure](#)
- [Tobacco Use Disorder](#)