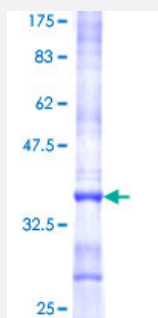


# PPP2R5A (Human) Recombinant Protein (Q01)

Catalog # H00005525-Q01

Size 25 ug, 10 ug

## Applications



## Specification

<b>Product Description</b>	Human PPP2R5A partial ORF ( NP_006234, 352 a.a. - 438 a.a.) recombinant protein with GST-tag at N-terminal.
<b>Sequence</b>	LFKQISKCVSSSHFQVAERALYFWNNEYILSLIEENIDKILPIMFASLYKISKEHWNPTIVALVYNVLKTLMEMNGKLFDDLTSSYK
<b>Host</b>	Wheat Germ (in vitro)
<b>Theoretical MW (kDa)</b>	35.31
<b>Interspecies Antigen Sequence</b>	Mouse (99); Rat (99)
<b>Preparation Method</b>	<a href="#">in vitro wheat germ expression system</a>
<b>Purification</b>	Glutathione Sepharose 4 Fast Flow
<b>Quality Control Testing</b>	12.5% SDS-PAGE Stained with Coomassie Blue.
<b>Storage Buffer</b>	50 mM Tris-HCl, 10 mM reduced Glutathione, pH=8.0 in the elution buffer.
<b>Storage Instruction</b>	Store at -80°C. Aliquot to avoid repeated freezing and thawing.
<b>Note</b>	Best use within three months from the date of receipt of this protein.

## Applications

- Enzyme-linked Immunoabsorbent Assay
- Western Blot (Recombinant protein)
- Antibody Production
- Protein Array

## Gene Info — PPP2R5A

Entrez GeneID [5525](#)

GeneBank Accession# [NM\\_006243](#)

Protein Accession# [NP\\_006234](#)

Gene Name PPP2R5A

Gene Alias B56A, MGC131915, PR61A

Gene Description protein phosphatase 2, regulatory subunit B', alpha isoform

Omim ID [601643](#)

Gene Ontology [Hyperlink](#)

**Gene Summary** The product of this gene belongs to the phosphatase 2A regulatory subunit B family. Protein phosphatase 2A is one of the four major Ser/Thr phosphatases, and it is implicated in the negative control of cell growth and division. It consists of a common heteromeric core enzyme, which is composed of a catalytic subunit and a constant regulatory subunit, that associates with a variety of regulatory subunits. The B regulatory subunit might modulate substrate selectivity and catalytic activity. This gene encodes an alpha isoform of the regulatory subunit B56 subfamily. [provided by RefSeq]

**Other Designations** OTTHUMP00000034891|PP2A, B subunit, B' alpha isoform|PP2A, B subunit, B56 alpha isoform|PP2A, B subunit, PR61 alpha isoform|PP2A, B subunit, R5 alpha isoform|protein phosphatase 2, regulatory subunit B (B56), alpha isoform|serine/threonine protein phosphatase 2, regulatory subunit B (B56), alpha isoform

## Pathway

- [Wnt signaling pathway](#)