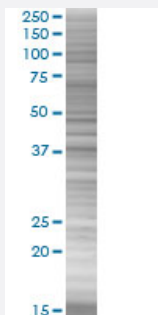


PPP2R4 293T Cell Transient Overexpression Lysate(Denatured)

Catalog # H00005524-T01

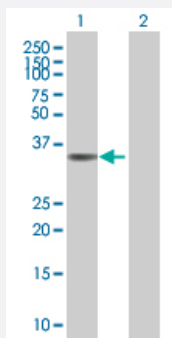
Size 100 uL

Applications



SDS-PAGE Gel

PPP2R4 transfected lysate.



Western Blot

Lane 1: PPP2R4 transfected lysate (36.8 KDa)

Lane 2: Non-transfected lysate.

Specification

Transfected Cell Line	293T
Plasmid	pCMV-PPP2R4 full-length
Host	Human
Theoretical MW (kDa)	36.8
Quality Control Testing	<p>Transient overexpression cell lysate was tested with Anti-PPP2R4 antibody (H00005524-B01) by Western Blots.</p> <p>SDS-PAGE Gel</p> <p>PPP2R4 transfected lysate.</p> <p>Western Blot</p> <p>Lane 1: PPP2R4 transfected lysate (36.8 KDa)</p> <p>Lane 2: Non-transfected lysate.</p>

Storage Buffer	1X Sample Buffer (50 mM Tris-HCl, 2% SDS, 10% glycerol, 300 mM 2-mercaptoethanol, 0.01% Bromophenol blue)
Storage Instruction	Store at -80°C. Aliquot to avoid repeated freezing and thawing.

Applications

- Western Blot

Gene Info — PPP2R4

Entrez GeneID	5524
GeneBank Accession#	NM_021131.3
Protein Accession#	-
Gene Name	PPP2R4
Gene Alias	MGC2184, PP2A, PR53, PTPA
Gene Description	protein phosphatase 2A activator, regulatory subunit 4
Omim ID	600756
Gene Ontology	Hyperlink

Gene Summary	Protein phosphatase 2A is one of the four major Ser/Thr phosphatases and is implicated in the negative control of cell growth and division. Protein phosphatase 2A holoenzymes are heterotrimeric proteins composed of a structural subunit A, a catalytic subunit C, and a regulatory subunit B. The regulatory subunit is encoded by a diverse set of genes that have been grouped into the B/PR55, B'/PR61, and B''/PR72 families. These different regulatory subunits confer distinct enzymatic specificities and intracellular localizations to the holoenzyme. The product of this gene belongs to the B' family. This gene encodes a specific phosphotyrosyl phosphatase activator of the dimeric form of protein phosphatase 2A. Alternative splicing results in multiple transcript variants encoding different isoforms. [provided by RefSeq]
--------------	---

Other Designations	OTTHUMP00000022333 PP2A phosphatase activator PP2A, subunit B' phosphotyrosyl phosphatase activator protein phosphatase 2A, regulatory subunit B' protein phosphatase 2A, regulatory subunit B' (PR 53)
--------------------	---

Disease

- [Kidney Failure](#)