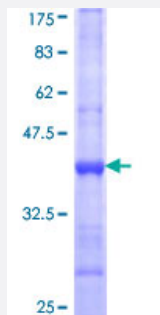


# PPP2R4 (Human) Recombinant Protein (Q01)

Catalog # H00005524-Q01

Size 25 ug, 10 ug

## Applications



## Specification

<b>Product Description</b>	Human PPP2R4 partial ORF ( NP_066954, 21 a.a. - 120 a.a.) recombinant protein with GST-tag at N-terminal.
<b>Sequence</b>	QNFILPKKEIHTVPDMGKWKRSQAYADYIGFILTLNEGVKGKKLTFEYRVSEAIEKLVALLNTLDRWIDETPPVDQPSRFGNKAYRTWYAKLDEEAENLV
<b>Host</b>	Wheat Germ (in vitro)
<b>Theoretical MW (kDa)</b>	36.74
<b>Preparation Method</b>	<a href="#">in vitro wheat germ expression system</a>
<b>Purification</b>	Glutathione Sepharose 4 Fast Flow
<b>Quality Control Testing</b>	12.5% SDS-PAGE Stained with Coomassie Blue.
<b>Storage Buffer</b>	50 mM Tris-HCl, 10 mM reduced Glutathione, pH=8.0 in the elution buffer.
<b>Storage Instruction</b>	Store at -80°C. Aliquot to avoid repeated freezing and thawing.
<b>Note</b>	Best use within three months from the date of receipt of this protein.

## Applications

- Enzyme-linked Immunoabsorbent Assay
- Western Blot (Recombinant protein)
- Antibody Production
- Protein Array

## Gene Info — PPP2R4

**Entrez GeneID** [5524](#)

**GeneBank Accession#** [NM\\_021131](#)

**Protein Accession#** [NP\\_066954](#)

**Gene Name** PPP2R4

**Gene Alias** MGC2184, PP2A, PR53, PTPA

**Gene Description** protein phosphatase 2A activator, regulatory subunit 4

**Omim ID** [600756](#)

**Gene Ontology** [Hyperlink](#)

**Gene Summary** Protein phosphatase 2A is one of the four major Ser/Thr phosphatases and is implicated in the negative control of cell growth and division. Protein phosphatase 2A holoenzymes are heterotrimeric proteins composed of a structural subunit A, a catalytic subunit C, and a regulatory subunit B. The regulatory subunit is encoded by a diverse set of genes that have been grouped into the B/PR55, B'/PR61, and B''/PR72 families. These different regulatory subunits confer distinct enzymatic specificities and intracellular localizations to the holoenzyme. The product of this gene belongs to the B' family. This gene encodes a specific phosphotyrosyl phosphatase activator of the dimeric form of protein phosphatase 2A. Alternative splicing results in multiple transcript variants encoding different isoforms. [provided by RefSeq]

**Other Designations** OTTHUMP00000022333|PP2A phosphatase activator|PP2A, subunit B'|phosphotyrosyl phosphatase activator|protein phosphatase 2A, regulatory subunit B'|protein phosphatase 2A, regulatory subunit B' (PR 53)

## Disease

- [Kidney Failure](#)