

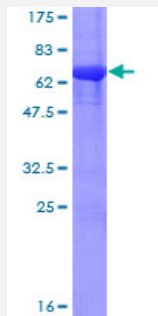
Full-Length

## PPP2R4 (Human) Recombinant Protein (P01)

Catalog # H00005524-P01

Size 25 ug, 10 ug

### Applications



### Specification

#### Product Description

Human PPP2R4 full-length ORF ( NP\_066954.2, 1 a.a. - 323 a.a.) recombinant protein with GST-tag at N-terminal.

#### Sequence

MAEGERQPPPDSSSEAPPATQNFII PKKEIHTVPDMGKWKRSQAYADYIGFILTLNEG VKGKKLTF  
EYRVSEAIEKL VALLNTLDRWIDETPPVDQPSRFGNKAYRTWYAKLDEEAENLVATV VPTHAAA  
VPEVAVYLKESVGNSTRIDYGTGHEAAFAAFLCCLCKIGVLRVDDQIAMFKVFNRYLEVMRKLQKT  
YRMEPAGSQGVWGLDDFQFLPFMWGSSQLIDHPYLEPRHFVDEKAVNENHKDYMFLCILFITEM  
KTGPFAEHSNQLWNISAVPSWSKVNQGLIRMYKAECLEKFPVIQHFKFGSLLPIHPVTSG

#### Host

Wheat Germ (in vitro)

#### Theoretical MW (kDa)

63.2

#### Preparation Method

[in vitro wheat germ expression system](#)

#### Purification

Glutathione Sepharose 4 Fast Flow

#### Quality Control Testing

12.5% SDS-PAGE Stained with Coomassie Blue.

#### Storage Buffer

50 mM Tris-HCl, 10 mM reduced Glutathione, pH=8.0 in the elution buffer.

#### Storage Instruction

Store at -80°C. Aliquot to avoid repeated freezing and thawing.

#### Note

Best use within three months from the date of receipt of this protein.

## Applications

- Enzyme-linked Immunoabsorbent Assay
- Western Blot (Recombinant protein)
- Antibody Production
- Protein Array

## Gene Info — PPP2R4

Entrez GeneID [5524](#)

GeneBank Accession# [NM\\_021131.3](#)

Protein Accession# [NP\\_066954.2](#)

Gene Name PPP2R4

Gene Alias MGC2184, PP2A, PR53, PTPA

Gene Description protein phosphatase 2A activator, regulatory subunit 4

Omim ID [600756](#)

Gene Ontology [Hyperlink](#)

**Gene Summary** Protein phosphatase 2A is one of the four major Ser/Thr phosphatases and is implicated in the negative control of cell growth and division. Protein phosphatase 2A holoenzymes are heterotrimeric proteins composed of a structural subunit A, a catalytic subunit C, and a regulatory subunit B. The regulatory subunit is encoded by a diverse set of genes that have been grouped into the B/PR55, B'/PR61, and B''/PR72 families. These different regulatory subunits confer distinct enzymatic specificities and intracellular localizations to the holoenzyme. The product of this gene belongs to the B' family. This gene encodes a specific phosphotyrosyl phosphatase activator of the dimeric form of protein phosphatase 2A. Alternative splicing results in multiple transcript variants encoding different isoforms. [provided by RefSeq]

**Other Designations** OTTHUMP00000022333|PP2A phosphatase activator|PP2A, subunit B'|phosphotyrosyl phosphatase activator|protein phosphatase 2A, regulatory subunit B'|protein phosphatase 2A, regulatory subunit B' (PR 53)

## Disease

- [Kidney Failure](#)