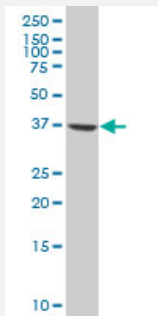


# PPP2R4 polyclonal antibody (A01)

Catalog # H00005524-A01

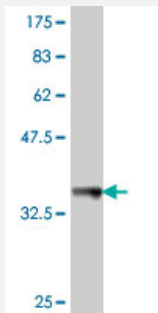
Size 50 uL

## Applications



### Western Blot (Cell lysate)

PPP2R4 polyclonal antibody (A01), Lot # 051212JC01 Western Blot analysis of PPP2R4 expression in HL-60 ( Cat # L014V1 ).



Western Blot detection against Immunogen (37.11 KDa) .

## Specification

Product Description	Mouse polyclonal antibody raised against a partial recombinant PPP2R4.
Immunogen	PPP2R4 (NP_066954, 21 a.a. ~ 120 a.a) partial recombinant protein with GST tag.
Sequence	QNFIIIPKKEIHTVPDMGKWKRSQAYADYIGFILTLNEGVKGKKLTFEYRVSEAIEKLVALNTLDRWIDETPPVDQPSRFGNKAYRTWYAKLDEEAENLV
Host	Mouse
Reactivity	Human
Quality Control Testing	Antibody Reactive Against Recombinant Protein. Western Blot detection against Immunogen (37.11 KDa) .

**Storage Buffer**

50 % glycerol

**Storage Instruction**

Store at -20°C or lower. Aliquot to avoid repeated freezing and thawing.

## Applications

- Western Blot (Cell lysate)

PPP2R4 polyclonal antibody (A01), Lot # 051212JC01 Western Blot analysis of PPP2R4 expression in HL-60 ( Cat # L014V1 ).

[Protocol Download](#)

- Western Blot (Recombinant protein)

[Protocol Download](#)

- ELISA

## Gene Info — PPP2R4

**Entrez GeneID**[5524](#)**GeneBank Accession#**[NM\\_021131](#)**Protein Accession#**[NP\\_066954](#)**Gene Name**

PPP2R4

**Gene Alias**

MGC2184, PP2A, PR53, PTPA

**Gene Description**

protein phosphatase 2A activator, regulatory subunit 4

**Omim ID**[600756](#)**Gene Ontology**[Hyperlink](#)**Gene Summary**

Protein phosphatase 2A is one of the four major Ser/Thr phosphatases and is implicated in the negative control of cell growth and division. Protein phosphatase 2A holoenzymes are heterotrimeric proteins composed of a structural subunit A, a catalytic subunit C, and a regulatory subunit B. The regulatory subunit is encoded by a diverse set of genes that have been grouped into the B/PR55, B'/PR61, and B''/PR72 families. These different regulatory subunits confer distinct enzymatic specificities and intracellular localizations to the holoenzyme. The product of this gene belongs to the B' family. This gene encodes a specific phosphotyrosyl phosphatase activator of the dimeric form of protein phosphatase 2A. Alternative splicing results in multiple transcript variants encoding different isoforms. [provided by RefSeq]

**Other Designations**

OTTHUMP00000022333|PP2A phosphatase activator|PP2A, subunit B'|phosphotyrosyl phosphatase activator|protein phosphatase 2A, regulatory subunit B'|protein phosphatase 2A, regulatory subunit B' (PR 53)

---

**Disease**

- [Kidney Failure](#)