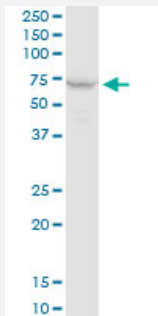


PPP2R1A monoclonal antibody (M02), clone 4E6

Catalog # H00005518-M02

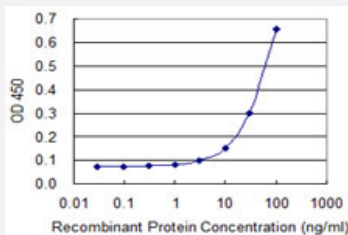
Size 100 ug

Applications



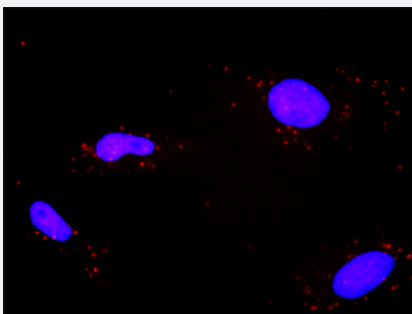
Western Blot (Cell lysate)

PPP2R1A monoclonal antibody (M02), clone 4E6. Western Blot analysis of PPP2R1A expression in Jurkat (Cat # L017V1).



Sandwich ELISA (Recombinant protein)

Detection limit for recombinant GST tagged PPP2R1A is 3 ng/ml as a capture antibody.



In situ Proximity Ligation Assay (Cell)

Proximity Ligation Analysis of protein-protein interactions between TP53 and PPP2R1A. HeLa cells were stained with anti-TP53 rabbit purified polyclonal 1:1200 and anti-PPP2R1A mouse monoclonal antibody 1:50. Each red dot represents the detection of protein-protein interaction complex, and nuclei were counterstained with DAPI (blue).

Specification

Product Description

Mouse monoclonal antibody raised against a full-length recombinant PPP2R1A.

Immunogen	PPP2R1A (AAH01537, 1 a.a. ~ 589 a.a) full-length recombinant protein with GST tag. MW of the GST tag alone is 26 KDa.
Sequence	MAAADGDDSLYPIAVLIDELRNEDVQLRLNSIKKLSTIALALGVERTRSELLPFLTDITYDEDEVLLALAEQLGTFATLVGGPEYVHCLLPPELESLATVEETVVRDKAVESLRAISHEHSPSDLEAHFVPLVKRLAGGDWFTSRTSACGLFSVCYPRVSSAVKAELRQYFRNLCSDDTPMVRRAAASKLGEFAKVLELDNVKSEIIPMFSNLASDEQDSVRLLAVEACVNIAQLLPQEDLEALVMPTLRQAAEDKSWRVRYMVADKFTLQKAVGPEITKTDLVPAFQNLMKDCEAEVRAAASHKVKEFCENLSADCRENVIMSQILPCIKELVSDANQHVKASALASVIMGLSPILGKDNITIEHLLPLFLAQLKDECPEVRLNIISNLDVCVNEVIGIRQLSQSLLPAMELAEDAKWRVRLAIIEMYPLLQGLGVEFFDEKLNSLCMAWLVDHVYAIREAATSNLKKLVKFGKEWAHATIIIPKVLAMSGDPNYLHRMTTLFCINVLSEVCGQDITTKHMLPTVLRMAGDPVANVRFNVAKSLQKIGPILDNSTLQSEVKPILEKLTQDQDQVDVKYFAQEALTVLSLA
Host	Mouse
Reactivity	Human
Isotype	IgG1 Kappa
Quality Control Testing	Antibody Reactive Against Recombinant Protein.
Storage Buffer	In 1x PBS, pH 7.4
Storage Instruction	Store at -20°C or lower. Aliquot to avoid repeated freezing and thawing.

Applications

- Western Blot (Cell lysate)

PPP2R1A monoclonal antibody (M02), clone 4E6. Western Blot analysis of PPP2R1A expression in Jurkat(Cat # L017V1).

[Protocol Download](#)

- Sandwich ELISA (Recombinant protein)

Detection limit for recombinant GST tagged PPP2R1A is 3 ng/ml as a capture antibody.

[Protocol Download](#)

- ELISA

- In situ* Proximity Ligation Assay (Cell)

Proximity Ligation Analysis of protein-protein interactions between TP53 and PPP2R1A. HeLa cells were stained with anti-TP53 rabbit purified polyclonal 1:1200 and anti-PPP2R1A mouse monoclonal antibody 1:50. Each red dot represents the detection of protein-protein interaction complex, and nuclei were counterstained with DAPI (blue).

Gene Info — PPP2R1A

Entrez GeneID [5518](#)

GeneBank Accession# [BC001537](#)

Protein Accession# [AAH01537](#)

Gene Name PPP2R1A

Gene Alias MGC786, PR65A

Gene Description protein phosphatase 2 (formerly 2A), regulatory subunit A, alpha isoform

Omim ID [605983](#)

Gene Ontology [Hyperlink](#)

Gene Summary This gene encodes a constant regulatory subunit of protein phosphatase 2. Protein phosphatase 2 is one of the four major Ser/Thr phosphatases, and it is implicated in the negative control of cell growth and division. It consists of a common heteromeric core enzyme, which is composed of a catalytic subunit and a constant regulatory subunit, that associates with a variety of regulatory subunits. The constant regulatory subunit A serves as a scaffolding molecule to coordinate the assembly of the catalytic subunit and a variable regulatory B subunit. This gene encodes an alpha isoform of the constant regulatory subunit A. [provided by RefSeq]

Other Designations PP2A, subunit A, PR65-alpha isoform|PP2A, subunit A, R1-alpha isoform|alpha isoform of regulatory subunit A, protein phosphatase 2|medium tumor antigen-associated 61 KDA protein|protein phosphatase 2 (formerly 2A), regulatory subunit A (PR 65), alpha isoform

Pathway

- [Long-term depression](#)
- [TGF-beta signaling pathway](#)
- [Tight junction](#)
- [Wnt signaling pathway](#)

Disease

- [Breast Diseases](#)
- [Breast Neoplasms](#)

- [Precancerous Conditions](#)