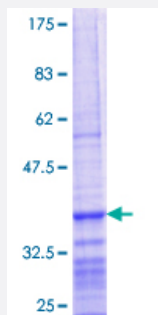


PPP1R10 (Human) Recombinant Protein (Q01)

Catalog # H00005514-Q01

Size 25 ug, 10 ug

Applications



Specification

Product Description	Human PPP1R10 partial ORF (NP_002705.2, 1 a.a. - 83 a.a.) recombinant protein with GST-tag at N-terminal.
Sequence	MGSGPIDPKELLKGLDSFLNRDGEVKSVDGISKIFSLMKEARKMVSRC TYLNILLQTRSPEILVKFID VGGYKLLNNWLTYSK
Host	Wheat Germ (in vitro)
Theoretical MW (kDa)	34.87
Interspecies Antigen Sequence	Mouse (95); Rat (93)
Preparation Method	in vitro wheat germ expression system
Purification	Glutathione Sepharose 4 Fast Flow
Quality Control Testing	12.5% SDS-PAGE Stained with Coomassie Blue.
Storage Buffer	50 mM Tris-HCl, 10 mM reduced Glutathione, pH=8.0 in the elution buffer.
Storage Instruction	Store at -80°C. Aliquot to avoid repeated freezing and thawing.
Note	Best use within three months from the date of receipt of this protein.

Applications

- Enzyme-linked Immunoabsorbent Assay
- Western Blot (Recombinant protein)
- Antibody Production
- Protein Array

Gene Info — PPP1R10

Entrez GeneID [5514](#)

GeneBank Accession# [NM_002714](#)

Protein Accession# [NP_002705.2](#)

Gene Name PPP1R10

Gene Alias CAT53, FB19, PNUTS, PP1R10

Gene Description protein phosphatase 1, regulatory (inhibitor) subunit 10

Omim ID [603771](#)

Gene Ontology [Hyperlink](#)

Gene Summary This gene encodes a protein with similarity to a rat protein that has an inhibitory effect on protein phosphatase-1 (PP1). The rat protein localizes to the nucleus and colocalizes with chromatin at distinct phases during mitosis. This gene lies within the major histocompatibility complex class I region on chromosome 6. [provided by RefSeq]

Other Designations phosphatase nuclear targeting subunit|protein phosphatase 1 regulatory subunit 10|protein phosphatase 1, regulatory subunit 10

Disease

- [Alzheimer disease](#)
- [Genetic Predisposition to Disease](#)
- [Lupus Erythematosus](#)