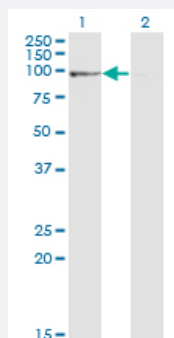


PPP1R10 monoclonal antibody (M02), clone 1D6

Catalog # H00005514-M02

Size 100 ug

Applications

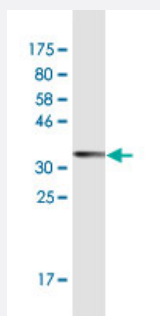


Western Blot (Transfected lysate)

Western Blot analysis of PPP1R10 expression in transfected 293T cell line by PPP1R10 monoclonal antibody (M02), clone 1D6.

Lane 1: PPP1R10 transfected lysate(99.1 KDa).

Lane 2: Non-transfected lysate.



Western Blot detection against Immunogen (34.87 KDa) .

Specification

Product Description	Mouse monoclonal antibody raised against a partial recombinant PPP1R10.
Immunogen	PPP1R10 (NP_002705.2, 1 a.a. ~ 83 a.a) partial recombinant protein with GST tag. MW of the GST tag alone is 26 KDa.
Sequence	MGSGPIDPKELLKGLDSFLNRDGEVKSVDGISKIFSLMKEARKMVSRCITYLNILLQTRSPEILVKFIDVGGYKLLNNWLTYSK
Host	Mouse
Reactivity	Human

Interspecies Antigen Sequence	Mouse (95); Rat (93)
Isotype	IgG2a Kappa
Quality Control Testing	Antibody Reactive Against Recombinant Protein. Western Blot detection against Immunogen (34.87 KDa) .
Storage Buffer	In 1x PBS, pH 7.4
Storage Instruction	Store at -20°C or lower. Aliquot to avoid repeated freezing and thawing.

Applications

- Western Blot (Transfected lysate)

Western Blot analysis of PPP1R10 expression in transfected 293T cell line by PPP1R10 monoclonal antibody (M02), clone 1D6.

Lane 1: PPP1R10 transfected lysate(99.1 KDa).

Lane 2: Non-transfected lysate.

[Protocol Download](#)

- Western Blot (Recombinant protein)

[Protocol Download](#)

- ELISA

Gene Info — PPP1R10

Entrez GeneID	5514
GeneBank Accession#	NM_002714
Protein Accession#	NP_002705.2
Gene Name	PPP1R10
Gene Alias	CAT53, FB19, PNUTS, PP1R10
Gene Description	protein phosphatase 1, regulatory (inhibitor) subunit 10
Omim ID	603771

Gene Ontology

[Hyperlink](#)

Gene Summary

This gene encodes a protein with similarity to a rat protein that has an inhibitory effect on protein phosphatase-1 (PP1). The rat protein localizes to the nucleus and colocalizes with chromatin at distinct phases during mitosis. This gene lies within the major histocompatibility complex class I region on chromosome 6. [provided by RefSeq]

Other Designations

phosphatase nuclear targeting subunit|protein phosphatase 1 regulatory subunit 10|protein phosphatase 1, regulatory subunit 10

Disease

- [Alzheimer disease](#)
- [Genetic Predisposition to Disease](#)
- [Lupus Erythematosus](#)