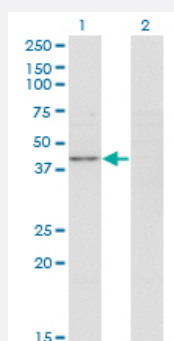


PPP1R8 monoclonal antibody (M05), clone 4B5

Catalog # H00005511-M05

Size 100 ug

Applications

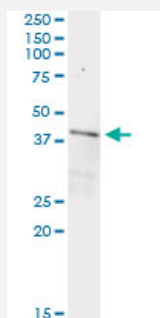


Western Blot (Transfected lysate)

Western Blot analysis of PPP1R8 expression in transfected 293T cell line by PPP1R8 monoclonal antibody (M05), clone 4B5.

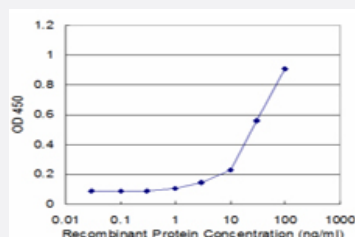
Lane 1: PPP1R8 transfected lysate (Predicted MW: 38.5 kDa).

Lane 2: Non-transfected lysate.



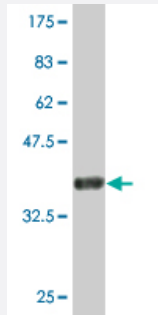
Immunoprecipitation

Immunoprecipitation of PPP1R8 transfected lysate using anti-PPP1R8 monoclonal antibody and Protein A Magnetic Bead, and immunoblotted with PPP1R8 monoclonal antibody.



Sandwich ELISA (Recombinant protein)

Detection limit for recombinant GST tagged PPP1R8 is approximately 3 ng/ml as a capture antibody.



Western Blot detection against Immunogen (36.74 KDa) .

Specification

Product Description	Mouse monoclonal antibody raised against a partial recombinant PPP1R8.
Immunogen	PPP1R8 (NP_002704.1, 28 a.a. ~ 127 a.a) partial recombinant protein with GST tag. MW of the GST tag alone is 26 KDa.
Sequence	RRMQNFAFSGGLYGGLPPTHSEAGSQPHGIHGTALIGGLPMPYPNLAPDVDLTPVVPSAVNMNP APNPAVYNPEAVNEPKKKKYAKEAWPGKKPTPSLLI
Host	Mouse
Reactivity	Human
Isotype	IgG2a Kappa
Quality Control Testing	Antibody Reactive Against Recombinant Protein. Western Blot detection against Immunogen (36.74 KDa) .
Storage Buffer	In 1x PBS, pH 7.4
Storage Instruction	Store at -20°C or lower. Aliquot to avoid repeated freezing and thawing.

Applications

- Western Blot (Transfected lysate)

Western Blot analysis of PPP1R8 expression in transfected 293T cell line by PPP1R8 monoclonal antibody (M05), clone 4B5.

Lane 1: PPP1R8 transfected lysate (Predicted MW: 38.5 KDa).

Lane 2: Non-transfected lysate.

[Protocol Download](#)

- Western Blot (Recombinant protein)

[Protocol Download](#)

- Immunoprecipitation

Immunoprecipitation of PPP1R8 transfected lysate using anti-PPP1R8 monoclonal antibody and Protein A Magnetic Bead, and immunoblotted with PPP1R8 monoclonal antibody.

[Protocol Download](#)

- Sandwich ELISA (Recombinant protein)

Detection limit for recombinant GST tagged PPP1R8 is approximately 3ng/ml as a capture antibody.

[Protocol Download](#)

- ELISA

Gene Info — PPP1R8

Entrez GeneID [5511](#)

GeneBank Accession# [NM_002713](#)

Protein Accession# [NP_002704.1](#)

Gene Name PPP1R8

Gene Alias ARD-1, ARD1, NIPP-1, NIPP1, PRO2047

Gene Description protein phosphatase 1, regulatory (inhibitor) subunit 8

Omim ID [602636](#)

Gene Ontology [Hyperlink](#)

Gene Summary This gene, through alternative splicing, encodes three different isoforms. Two of the protein isoforms encoded by this gene are specific inhibitors of type 1 serine/threonine protein phosphatases and can bind but not cleave RNA. The third protein isoform lacks the phosphatase inhibitory function but is a single-strand endoribonuclease comparable to RNase E of E. coli. This isoform requires magnesium for its function and cleaves specific sites in A+U-rich regions of RNA. [provided by RefSeq]

Other Designations OTTHUMP00000003847|OTTHUMP00000003848|OTTHUMP00000003849|OTTHUMP00000044938|RNase E|activator of RNA decay|nuclear inhibitor of protein phosphatase-1|nuclear subunit of PP-1|protein phosphatase 1 regulatory inhibitor subunit 8|protein phosphatase 1 regula