

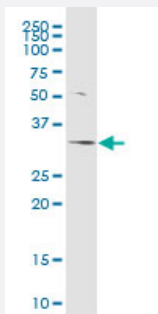
MaxPab®

PPP1R3C MaxPab rabbit polyclonal antibody (D03)

Catalog # H00005507-D03

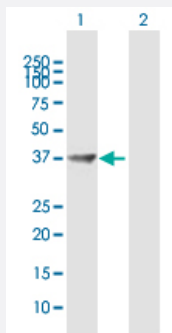
Size 100 uL

Applications



Western Blot (Tissue lysate)

PPP1R3C MaxPab rabbit polyclonal antibody. Western Blot analysis of PPP1R3C expression in mouse liver.

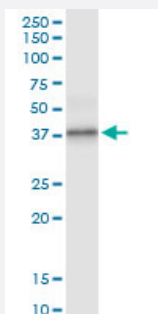


Western Blot (Transfected lysate)

Western Blot analysis of PPP1R3C expression in transfected 293T cell line ([H00005507-T03](#)) by PPP1R3C MaxPab polyclonal antibody.

Lane 1: PPP1R3C transfected lysate(34.98 KDa).

Lane 2: Non-transfected lysate.



Immunoprecipitation

Immunoprecipitation of PPP1R3C transfected lysate using anti-PPP1R3C MaxPab rabbit polyclonal antibody and Protein A Magnetic Bead, and immunoblotted with PPP1R3C purified MaxPab mouse polyclonal antibody (B01P) ([H00005507-B01P](#)).

Specification

Product Description

Rabbit polyclonal antibody raised against a full-length human PPP1R3C protein.

Immunogen	PPP1R3C (AAH12625.1, 1 a.a. ~ 317 a.a) full-length human protein.
Sequence	MSCTRMIQVLDPRLTSSVMPVDVAMRLCLAHSPPVKSFLGPYDEFQRRHFVNKLKPLKSCLNIK HKAKSQNDWKCSHNQAKKRVVFADSKGLSLTAIHVFSDLPEEPAWDLQFDLLDLNDISSALKHH EEKNLILDFFPQPSTDYLSFRSHFQKNFVCLENCILQERTVTGTVKVKNVSFEKKVQIRITFDSWKN YTDVDCVYMKNVYGGTDSDTFSFAIDLPPVIPTEQKIEFCISYHANGQVFWDNNDGQNYRIVHVQW KPDGVQTQMAPQDCAFHQTSPKTELESTIFGSPRLASGLFPEWQSWGRMENLASYSR
Host	Rabbit
Reactivity	Human, Mouse
Interspecies Antigen Sequence	Mouse (86)
Quality Control Testing	Antibody reactive against mammalian transfected lysate.
Storage Buffer	No additive
Storage Instruction	Store at -20°C or lower. Aliquot to avoid repeated freezing and thawing.

Applications

- Western Blot (Tissue lysate)

PPP1R3C MaxPab rabbit polyclonal antibody. Western Blot analysis of PPP1R3C expression in mouse liver.

[Protocol Download](#)

- Western Blot (Transfected lysate)

Western Blot analysis of PPP1R3C expression in transfected 293T cell line ([H00005507-T03](#)) by PPP1R3C MaxPab polyclonal antibody.

Lane 1: PPP1R3C transfected lysate(34.98 KDa).

Lane 2: Non-transfected lysate.

[Protocol Download](#)

- Immunoprecipitation

Immunoprecipitation of PPP1R3C transfected lysate using anti-PPP1R3C MaxPab rabbit polyclonal antibody and Protein A Magnetic Bead, and immunoblotted with PPP1R3C purified MaxPab mouse polyclonal antibody (B01P) ([H00005507-B01P](#)).

[Protocol Download](#)

Gene Info — PPP1R3C

Entrez GeneID	5507
GeneBank Accession#	BC012625.1
Protein Accession#	AAH12625.1
Gene Name	PPP1R3C
Gene Alias	PPP1R5
Gene Description	protein phosphatase 1, regulatory (inhibitor) subunit 3C
Omim ID	602999
Gene Ontology	Hyperlink
Gene Summary	<p>Protein phosphatase-1 (PP1; see MIM 176875) participates in the regulation of a wide variety of cellular functions by reversible protein phosphorylation. The ability of PP1 to regulate diverse functions resides in its capacity to interact with a variety of regulatory subunits that may target PP1 to specific subcellular locations, modulate its substrate specificity, and allow its activity to be responsive to extracellular signals. Several targeting subunits of PP1 have been identified, including PPP1R5, the glycogen-binding subunits PPP1R3 (MIM 600917) and PPP1R4, and the nuclear inhibitor of PP1 (PPP1R8; MIM 602636).[supplied by OMIM]</p>
Other Designations	OTTHUMP00000020089 Phosphatase 1, regulatory inhibitor subunit 5 protein targeting to glycogen

Pathway

- [Insulin signaling pathway](#)

Disease

- [Alzheimer Disease](#)
- [Genetic Predisposition to Disease](#)