

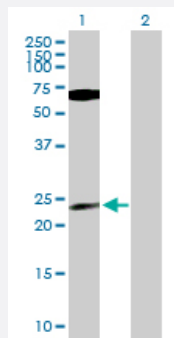
MaxPab®

# PPP1CB purified MaxPab mouse polyclonal antibody (B01P)

Catalog # H00005500-B01P

Size 50 ug

## Applications



### Western Blot (Transfected lysate)

Western Blot analysis of PPP1CB expression in transfected 293T cell line ([H00005500-T02](#)) by PPP1CB MaxPab polyclonal antibody.

Lane 1: PPP1CB transfected lysate(35.97 KDa).

Lane 2: Non-transfected lysate.

## Specification

Product Description	Mouse polyclonal antibody raised against a full-length human PPP1CB protein.
Immunogen	PPP1CB (NP_002700.1, 1 a.a. ~ 327 a.a) full-length human protein.
Sequence	MADGELNVDSLITRLLEVRCRPGKIVQMTEAEVRGLCIKSREIFLSQPILLELEAPLKICGDIHGQY TDLLRLFYGGFPPEANYLFLGDYVDRGKQSLETICLLLAYKIKYPENFFLLRGNHECASINRIYGFY DECKRRFNIKWLKTFITDCFNCLPIAAMDEKIFCCHGGLSPDLQSMEQIRRMPTDVPDTGLLCDL LWSDPKDVKQGWGENDRGVSFTFGADVVSFLNRHDLDLICRAHQVVEDGYEFFAKRQLVTLF SAPNYCGEFDNAGGMMSVDETLMCSFQILKPSEKKAKYQYGGLNSGRPVTTPRTANPPKKR
Host	Mouse
Reactivity	Human
Quality Control Testing	Antibody reactive against mammalian transfected lysate.
Storage Buffer	In 1x PBS, pH 7.4
Storage Instruction	Store at -20°C or lower. Aliquot to avoid repeated freezing and thawing.

## Applications

- Western Blot (Transfected lysate)

Western Blot analysis of PPP1CB expression in transfected 293T cell line ([H00005500-T02](#)) by PPP1CB MaxPab polyclonal antibody.

Lane 1: PPP1CB transfected lysate(35.97 KDa).

Lane 2: Non-transfected lysate.

[Protocol Download](#)

## Gene Info — PPP1CB

Entrez GeneID	<a href="#">5500</a>
GeneBank Accession#	<a href="#">NM_002709.2</a>
Protein Accession#	<a href="#">NP_002700.1</a>
Gene Name	PPP1CB
Gene Alias	MGC3672, PP-1B, PPP1CD
Gene Description	protein phosphatase 1, catalytic subunit, beta isoform
Omim ID	<a href="#">600590</a>
Gene Ontology	<a href="#">Hyperlink</a>
Gene Summary	The protein encoded by this gene is one of the three catalytic subunits of protein phosphatase 1 (PP1). PP1 is a serine/threonine specific protein phosphatase known to be involved in the regulation of a variety of cellular processes, such as cell division, glycogen metabolism, muscle contractility, protein synthesis, and HIV-1 viral transcription. Mouse studies suggest that PP1 functions as a suppressor of learning and memory. Two alternatively spliced transcript variants encoding distinct isoforms have been observed. [provided by RefSeq]
Other Designations	protein phosphatase 1, catalytic subunit, beta protein phosphatase 1, catalytic subunit, delta isoform protein phosphatase 1-beta protein phosphatase 1-delta serine/threonine protein phosphatase PP1-beta catalytic subunit

## Pathway

- [Focal adhesion](#)

- [Insulin signaling pathway](#)
- [Long-term potentiation](#)
- [Regulation of actin cytoskeleton](#)
- [Vascular smooth muscle contraction](#)

## Disease

- [Breast cancer](#)
- [Breast Neoplasms](#)
- [Genetic Predisposition to Disease](#)