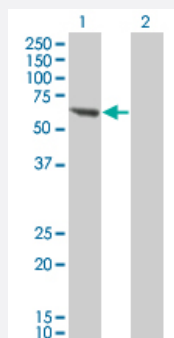


PPM1B monoclonal antibody (M01), clone 1A3-2A4

Catalog # H00005495-M01

Size 100 ug

Applications

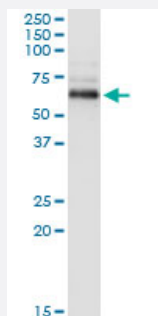


Western Blot (Transfected lysate)

Western Blot analysis of PPM1B expression in transfected 293T cell line by PPM1B monoclonal antibody (M01), clone 1A3-2A4.

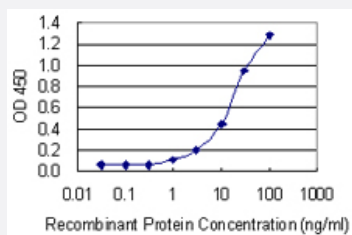
Lane 1: PPM1B transfected lysate (52.643 KDa).

Lane 2: Non-transfected lysate.



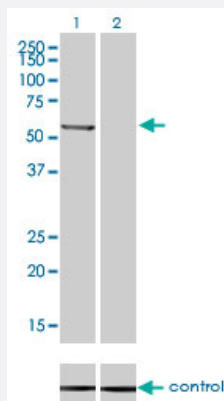
Immunoprecipitation

Immunoprecipitation of PPM1B transfected lysate using anti-PPM1B monoclonal antibody and Protein A Magnetic Bead, and immunoblotted with PPM1B monoclonal antibody.



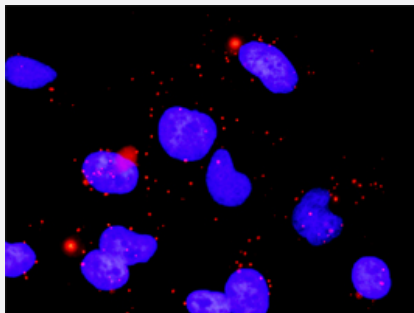
Sandwich ELISA (Recombinant protein)

Detection limit for recombinant GST tagged PPM1B is 0.3 ng/ml as a capture antibody.



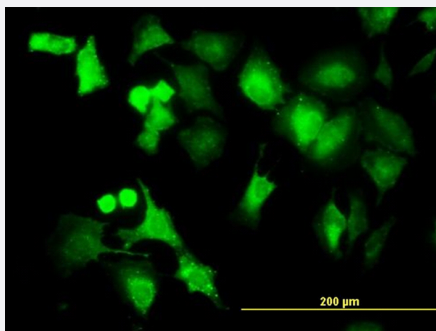
RNAi Knockdown (Antibody validated)

Western blot analysis of PPM1B over-expressed 293 cell line, cotransfected with PPM1B Validated Chimera RNAi (Cat # H00005495-R01V) (Lane 2) or non-transfected control (Lane 1). Blot probed with PPM1B monoclonal antibody (M01), clone 1A3-2A4 (Cat # H00005495-M01). GAPDH (36.1 kDa) used as specificity and loading control.



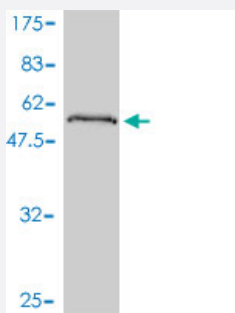
In situ Proximity Ligation Assay (Cell)

Proximity Ligation Analysis of protein-protein interactions between ARRB2 and PPM1B. HeLa cells were stained with anti-ARRB2 rabbit purified polyclonal 1:1200 and anti-PPM1B mouse monoclonal antibody 1:50. Each red dot represents the detection of protein-protein interaction complex, and nuclei were counterstained with DAPI (blue).



Immunofluorescence

Immunofluorescence of monoclonal antibody to PPM1B on HeLa cell. [antibody concentration 10 ug/ml]



Western Blot detection against Immunogen (46.86 KDa) .

Specification

Product Description

Mouse monoclonal antibody raised against a full length recombinant PPM1B.

Immunogen

PPM1B (AAH12002, 1 a.a. ~ 192 a.a) full-length recombinant protein with GST tag. MW of the GST tag alone is 26 KDa.

Sequence	MSVLVCFSSNAPKVSDEAVKKDSELDKHLESRVEEIMEKSGEEGMPDLAHVMRILSAENIPNLPP GGGLAGKRNVEAVYSRLNPHRES DGASDEAEESGSQGKLVEALRQMRINHRGNYRQLLEMLT SYRLAKVEGEESPAEPAATATSSNSDAGNPVTMQESHTESESGLAELDSSNEDAGTKMSGKI
Host	Mouse
Reactivity	Human
Isotype	IgG1 kappa
Quality Control Testing	Antibody Reactive Against Recombinant Protein. Western Blot detection against Immunogen (46.86 KDa) .
Storage Buffer	In 1x PBS, pH 7.4
Storage Instruction	Store at -20°C or lower. Aliquot to avoid repeated freezing and thawing.

Applications

- Western Blot (Transfected lysate)

Western Blot analysis of PPM1B expression in transfected 293T cell line by PPM1B monoclonal antibody (M01), clone 1A3-2A4.

Lane 1: PPM1B transfected lysate(52.643 KDa).

Lane 2: Non-transfected lysate.

[Protocol Download](#)

- Western Blot (Recombinant protein)

[Protocol Download](#)

- Immunoprecipitation

Immunoprecipitation of PPM1B transfected lysate using anti-PPM1B monoclonal antibody and Protein A Magnetic Bead, and immunoblotted with PPM1B monoclonal antibody.

[Protocol Download](#)

- Sandwich ELISA (Recombinant protein)

Detection limit for recombinant GST tagged PPM1B is 0.3 ng/ml as a capture antibody.

[Protocol Download](#)

- ELISA

- RNAi Knockdown (Antibody validated)

Western blot analysis of PPM1B over-expressed 293 cell line, cotransfected with PPM1B Validated Chimera RNAi (Cat # H00005495-R01V) (Lane 2) or non-transfected control (Lane 1). Blot probed with PPM1B monoclonal antibody (M01), clone 1A3-2A4 (Cat # H00005495-M01). GAPDH (36.1 kDa) used as specificity and loading control.

[Protocol Download](#)

- *In situ* Proximity Ligation Assay (Cell)

Proximity Ligation Analysis of protein-protein interactions between ARRB2 and PPM1B. HeLa cells were stained with anti-ARRB2 rabbit purified polyclonal 1:1200 and anti-PPM1B mouse monoclonal antibody 1:50. Each red dot represents the detection of protein-protein interaction complex, and nuclei were counterstained with DAPI (blue).

- Immunofluorescence

Immunofluorescence of monoclonal antibody to PPM1B on HeLa cell. [antibody concentration 10 ug/ml]

Gene Info — PPM1B

Entrez GeneID [5495](#)

GeneBank Accession# [BC012002](#)

Protein Accession# [AAH12002](#)

Gene Name PPM1B

Gene Alias MGC21657, PP2C-beta-X, PP2CB, PP2CBETA, PPC2BETAX

Gene Description protein phosphatase 1B (formerly 2C), magnesium-dependent, beta isoform

Omim ID [603770](#)

Gene Ontology [Hyperlink](#)

Gene Summary The protein encoded by this gene is a member of the PP2C family of Ser/Thr protein phosphatases. PP2C family members are known to be negative regulators of cell stress response pathways. This phosphatase has been shown to dephosphorylate cyclin-dependent kinases (CDKs), and thus may be involved in cell cycle control. Overexpression of this phosphatase is reported to cause cell-growth arrest or cell death. Alternative splicing results in multiple transcript variants encoding different isoforms. Additional transcript variants have been described, but currently do not represent full-length sequences. [provided by RefSeq]

Other Designations OTTHUMP00000158953|OTTHUMP00000158955|protein phosphatase 1B|protein phosphatase 2C beta isoform|protein phosphatase 2C-like protein

Pathway

- [MAPK signaling pathway](#)

Disease

- [Tobacco Use Disorder](#)